

Date of Addendum No 4: August 8, 2022

Previous Issue:

Addendum No 3 – August 5, 2022
Addendum No 2 – August 3, 2022
Addendum No 1 – July 29, 2022
Construction Documents – July 22, 2022

Owner

Town of Pembroke, MA
128 Center Street
Pembroke, MA Boston, MA 02359

Owners Representative

Compass Project Management
One Edgewater Drive, Suite 204
Norwood, MA 02062

Architect

Bargmann Hendrie + Archetype
9 Channel Center Street, Suite 300
Boston, MA 02210

This Addendum forms part of the Contract Documents and modifies the original Bidding Documents dated July 22, 2022, Addendum No 1 dated July 29, 2022, Addendum No 2 dated August 3, 2022, and Addendum No 3 dated August 5, 2022.

Acknowledge receipt of this Addendum in the space provided in the appropriate space on the Form for General Bid and Form for Sub-Bid. Failure to do so will be subject to Bidder disqualification.

Attachments:

Specifications: Not applicable this Addendum.

Drawings: 5 drawing revised as noted in this Addendum. Included and issued in full are 5 revised drawings.

RFIs: Responses to Bidder questions at indicated below.

SPECIFICATIONS (PROJECT MANUAL)

1. TABLE OF CONTENTS

- A. Add line 00904 to reflect Addendum No. 4

2. 00100 INSTRUCTION TO BIDDERS

- A. In section 2 – change “Total construction duration is fourteen (14) months.” to be “Total construction duration is anticipated to take fourteen (14) months with a Notice to Proceed on or before October 31, 2022.

- B.

DRAWINGS

GENERAL

1. G0001 – DRAWING LIST

- A. No Changes in Addendum #4

ARCHITECTURAL

2. A101 – FIRST FLOOR PLAN

- A. Notes added to clarify Stair 2 as delegated design, issued as part of Addendum #3

3. A102 – SECOND FLOOR PLAN

- A. Notes added to clarify Stair 2 as delegated design, issued as part of Addendum #3

4. A103 – ROOF PLAN

- A. Notes added to clarify Stair 2 as delegated design, issued as part of Addendum #3
B. Clarification of equipment screens to show HSS post framing.

5. A400 – ENLARGED PLAN DETAILS

- A. Graphical clarifications to wall assembly, expansion joint details, and notation to provide woven corners at ground face masonry units – miter block corners not accepted.

6. A410 – TYPICAL ROOF DETAILS

- A. Revised drawing 3/A410 at equipment screen detail

REQUESTS FOR INFORMATION

The following is a summary of requests for information, questions and inquiries by Plan Holders. A clarification with no change to the Documents are answered below. Responses that require a change to the Contract documents have been included in the Addendum Changes.

1. Questions Regarding Air and Vapor Barriers and Waterproofing – RFI 17

- A. Details CS7, CS8 and CS16 call for TOOLED JOINT TO MATCH CONTROL JOINT FILL WITH FLEXIBLE EPOXY JOINT SEALANT BY 079200. Flexible epoxy joint sealants are not specified in section 079200 but are specified in section 033000-2.1_J_2. Please

confirm that the flexible epoxy joint sealants are furnished and installed by 033000.

Responses: Flexible epoxy joint sealants are by section 079200, revised specification section and revised drawings CS7, CS8, CS16 to be issued in a forthcoming addendum.

2. Questions Regarding Schedule - RFIs 12, 13, 14, 15

- A. Addendum #1 indicates funding isn't approved and town meeting to approve funding is not until the Fall of 2022. Please provide an anticipated NTP so the GC's can determine an approximate schedule.

Response: Hold for Town of Pembroke / COMPASS discussion at 8/11 meeting.

- B. We would also like to request a 2-week extension on the GC bid to allow us more time to secure pricing.

Response: Refer to revisions to section 00020 Invitation to Bid included in this addendum – issued in addendum 3

- C. The duration of 14 months isn't adequate time to abatement and demolish the existing facility and construct a new 28,000 SF facility. We request a duration of 18 months.

Response: Hold for Town of Pembroke / COMPASS discussion at 8/11 meeting.

3. Questions Regarding Roofing - RFIs 25A – 25F

- A. REFER TO RFI LOG – NOTE SUB-BID QUESTION DEADLINE WAS 8/3/22 BASED ON BID DUE DATE OF 8/10/22.

Response: Deadline for Filed Sub-Bid questions was 08/3/22 at 1:00pm, questions to be reviewed and responded to in a future addendum.

END OF ADDENDUM NO. 4

PROJECT MANUAL

TABLE OF CONTENTS

DIVISION 00 - PROCUREMENT AND CONTRACTING REQUIREMENTS

PROCUREMENT REQUIREMENTS

		Author	First Issue	Revised Date
00110	Table of Contents	BH+A	7/22/22	7/29/22, 8/3/22
00020	Invitation to Bid	ToP	7/22/22	8/5/22
00100	Instructions to Bidders	ToP	7/22/22	8/5/22
00101	Supplemental instructions to Bidders for Submitting an Electronic Bid (E-Bid)	ToP	7/22/22	
	Additional Instructions for Electronic Bid	ToP	7/22/22	
00125	List of Prequalified Bidders	ToP	7/22/22	
002113.05	Goals for Participation By MBE/WBE	ToP	8/5/22	
	A. Letter of Intent – MWBE Participation	ToP	8/5/22	
	B. Schedule for Participation - MWBE	ToP	8/5/22	
	C. Public Project MWBE Report	ToP	8/5/22	
002113.10	Pre-Bid Waiver of MBE/WBE	ToP	8/5/22	
00400	DCAMM Prime/General Update Statement	ToP	7/22/22	
	Cover page and DCAMM Form	ToP	7/22/22	
00401	DCAMM Sub-Bidder Update Statement	ToP	7/22/22	
	Cover page and DCAMM Form	ToP	7/22/22	
00402	Certifications Required by Law for Public Construction Contracts	ToP	7/22/22	
00415	Form of General Bid	ToP	7/22/22	
00416	Form of Sub Bid	ToP	7/22/22	
00417	Unit Price Proposal Sheet	ToP	7/22/22	7/29/22

CONTRACTING REQUIREMENTS

		Author	First Issue	Revised Date
00500	Form of Agreement Between Owner and Contractor	ToP	7/22/22	
	AIA A101 - 2017	ToP	7/22/22	
00501	Certificate of Vote	ToP	7/22/22	
00610	Construction Performance Bond	ToP	7/22/22	
00620	Construction Payment Bond	ToP	7/22/22	
00700	General Conditions	ToP	7/22/22	
	AIA 201-2017		7/22/22	
00750	Supplemental General Conditions for Construction AIA201-2017	ToP	7/22/22	
00800	Insurance	ToP	7/22/22	

00825	Prevailing Wage	ToP	7/22/22	
	Attachment A – Wage Rate Request	ToP	7/22/22	
	Attachment B – Commonwealth of Massachusetts Prevailing Wage Notices	ToP	7/22/22	
	Attachment C – Payroll Compliance	ToP	7/22/22	
	Attachment D – Payroll Reporting Form	ToP	7/22/22	
00850	Incorporation of Applicable Provisions of MA General Laws	ToP	7/22/22	
00901	Addendum No. 1	BH+A/KA	7/29/22	
00902	Addendum No. 2	BH+A/KA	8/3/22	
00903	Addendum No. 3	BH+A/KA	8/5/22	
00904	Addendum No. 4	BH+A/KA	8/8/22	

SPECIFICATIONS

DIVISION 01 - GENERAL REQUIREMENTS

		Author	First Issue	Revised Date
011100	Summary of Work	BH+A/KA	7/22/22	
011400	Work Restrictions	BH+A/KA	7/22/22	
011400.1	Decision of the Planning Board	ToP	7/29/22	
011401	Electronic Release Form	BH+A/KA	7/22/22	
012200	Unit Prices	BH+A/KA	7/22/22	
012300	Alternates	BH+A/KA	7/22/22	
012400	Schedule of Values	BH+A/KA	7/22/22	
013100	Project Management and Coordination	BH+A/KA	7/22/22	
013119	Project Meetings	BH+A/KA	7/22/22	
013200	Construction Progress Documentation	BH+A/KA	7/22/22	
013300	Submittal Procedures	BH+A/KA	7/22/22	
013301	Substitution Request Form	BH+A/KA	7/22/22	
013543	Environmental Procedures	UEC	7/22/22	
014000	Quality Requirements	BH+A/KA	7/22/22	
014330	Mock-Ups	BH+A/KA	7/22/22	
015000	Temporary Facilities and Controls	BH+A/KA	7/22/22	
017329	Cutting and Patching	BH+A/KA	7/22/22	
017400	Construction Waste Management	BH+A/KA	7/22/22	
017700	Closeout Procedures	BH+A/KA	7/22/22	
017839	Project Record Documents	BH+A/KA	7/22/22	
018100	General Commissioning Requirements	ToP	7/22/22	
0181119	Indoor Air Quality Requirements	BH+A/KA	7/22/22	

DIVISION 02 - EXISTING CONDITIONS

		Author	First Issue	Revised Date
022820	Asbestos Remediation	UEC	7/22/22	
023000	Subsurface Investigation	BH+A/KA	7/22/22	
024100	Demolition	BH+A/KA	7/22/22	

029000	Div 02 – Available Project Information	BH+A/KA	7/22/22	
029001	Existing Building Plans	ToP	7/22/22	
029002	Existing Building Photographs	BH+A/KA	7/22/22	
029003	Geotechnical Engineering Report	MGA	7/22/22	
029004	Flow Test	MELS	7/22/22	

DIVISION 03 – CONCRETE

		Author	First Issue	Revised Date
033000	Cast-In-Place Concrete	FBRA	7/22/22	
035412	Gypsum Cement Underlayment	BH+A/KA	8/3/22	

DIVISION 04 - MASONRY

		Author	First Issue	Revised Date
040001 *	Masonry Work	BH+A/KA	7/22/22	
042000	Unit Masonry (part of 040001 FSB)	BH+A/KA	7/22/22	

DIVISION 05 - METALS

		Author	First Issue	Revised Date
050001 *	Miscellaneous and Ornamental Iron	BH+A/KA	7/22/22	
051200	Structural Steel Framing	FBRA	7/22/22	
051226	Shear Connections	FBRA	7/22/22	
053100	Steel Decking	FBRA	7/22/22	
054000	Cold-Formed Metal Framing	BH+A/KA	7/22/22	
055000	Metal Fabrications (part of 050001 FSB)	BH+A/KA	7/22/22	
055100	Metal Stairs and Railings (part of 050001 FSB)	BH+A/KA	7/22/22	

DIVISION 06 - WOOD, PLASTICS AND COMPOSITES

		Author	First Issue	Revised Date
061000	Rough Carpentry	FBRA/BH+A	7/22/22	
061600	Sheathing	BH+A/KA	7/22/22	
061753	Shop Fabricated Wood Trusses	FBRA	7/22/22	
062010	Exterior Finish Carpentry	BH+A/KA	7/22/22	
064020	Interior Architectural Woodwork	BH+A/KA	7/22/22	
066400	FRP Paneling	BH+A/KA	7/22/22	

DIVISION 07 - THERMAL AND MOISTURE PROTECTION

		Author	First Issue	Revised Date
070001 *	Waterproofing, Dampproofing and Caulking	BH+A/KA	7/22/22	
070002 *	Roofing and Flashing	BH+A/KA	7/22/22	
071100	Bituminous Dampproofing (part of 070001	BH+A/KA	7/22/22	

* Filed Sub-Bid Required

	FSB)			
071300	Sheet Waterproofing (part of 070001 FSB)	BH+A/KA	7/22/22	
071400	Fluid-Applied Waterproofing (part of 070001 FSB)	BH+A/KA	7/22/22	
071610	Crystalline Waterproofing (part of 070001 FSB)	BH+A/KA	7/22/22	
072100	Thermal Insulation	BH+A/KA	7/22/22	
072600	Vapor Retarder	BH+A/KA	7/22/22	
072700	Air Barriers (part of 070001 FSB)	BH+A/KA	7/22/22	
073113	Asphalt Shingles (part of 070002 FSB)	BH+A/KA	7/22/22	
074610	Fiber-Cement Siding	BH+A/KA	7/22/22	
075400	Thermoplastic Membrane Roofing (part of 070002 FSB)	BH+A/KA	7/22/22	
076200	Sheet Metal Flashing and Trim (part of 070002 FSB)	BH+A/KA	7/22/22	
077100	Roof Specialties (part of 070002 FSB)	BH+A/KA	7/22/22	
077200	Roof Accessories	BH+A/KA	7/22/22	
078410	Penetration Firestopping	BH+A/KA	7/22/22	
078440	Fire-Resistive Joint Systems	BH+A/KA	7/22/22	
079200	Joint Sealants (part of 070001 FSB)	BH+A/KA	7/22/22	
079500	Expansion Control	BH+A/KA	7/22/22	

DIVISION 08 - OPENINGS

		Author	First Issue	Revised Date
080002 *	Glass and Glazing	BH+A/KA	7/22/22	
081110	Hollow Metal Doors and Frames	BH+A/KA	7/22/22	
081400	Flush Wood Doors	BH+A/KA	7/22/22	
083110	Access Doors and Frames	BH+A/KA	7/22/22	
083310	Overhead Coiling Doors	BH+A/KA	7/22/22	
083320	Overhead Coiling Grilles	BH+A/KA	7/22/22	
083419	Fiberglass Doors and Frames	BH+A/KA	7/22/22	
085413	Fiberglass Windows	BH+A/KA	7/22/22	
087100	Door Hardware	ASC	7/22/22	
088000	Glazing (part of 080002 FSB)	BH+A/KA	7/22/22	
089000	Louvers and Vents	BH+A/KA	7/22/22	

DIVISION 09 - FINISHES

		Author	First Issue	Revised Date
090002 *	Tile	BH+A/KA	7/22/22	
090003 *	Acoustical Tile	BH+A/KA	7/22/22	
090005 *	Resilient Floors	BH+A/KA	7/22/22	
090007 *	Painting	BH+A/KA	7/22/22	
092110	Gypsum Board Assemblies	BH+A/KA	7/22/22	
092120	Gypsum Board Shaft-Wall Assemblies	BH+A/KA	7/22/22	
093000	Tiling (part of 090002 FSB)	BH+A/KA	7/22/22	

* Filed Sub-Bid Required

095100	Acoustical Ceilings (part of 090003 FSB)	BH+A/KA	7/22/22	
096460	Wood Athletic Flooring	BH+A/KA	7/22/22	
096510	Resilient Flooring and Accessories (part of 090005 FSB)	BH+A/KA	7/22/22	
096560	Resilient Athletic Flooring (part of 090005 FSB)	BH+A/KA	7/22/22	
096710	Resinous Flooring	BH+A/KA	7/22/22	
096800	Carpeting	BH+A/KA	7/22/22	
099000	Painting and Coating (part of 090007 FSB)	BH+A/KA	7/22/22	

DIVISION 10 - SPECIALTIES

		Author	First Issue	Revised Date
101400	Signage	BH+A/KA	7/22/22	
102110	Toilet Compartments	BH+A/KA	7/22/22	
102220	Folding Panel Partitions	BH+A/KA	7/22/22	
102800	Toilet Accessories	BH+A/KA	7/22/22	
104100	Emergency Access and Information Cabinets	BH+A/KA	7/22/22	
104400	Fire Protection Specialties	BH+A/KA	7/22/22	
105600	Storage Shelving and Support Brackets	BH+A/KA	8/3/22	

DIVISION 11 - EQUIPMENT

		Author	First Issue	Revised Date
114000	Foodservice Equipment	CMI	7/22/22	
116620	Athletic Equipment	BH+A/KA	7/22/22	

DIVISION 12 - FURNISHINGS

		Author	First Issue	Revised Date
122400	Shades	BH+A/KA	7/22/22	
124815	Entrance Floor Mats	BH+A/KA	7/22/22	

DIVISION 14 - CONVEYING EQUIPMENT

		Author	First Issue	Revised Date
140001 *	Elevators	BH+A/KA	7/22/22	
142100	Machine Roomless Passenger Traction Elevator (part of 140001 FSB)	BSq	7/22/22	
144000	Elevator Maintenance and Repair	BSq	7/22/22	

DIVISION 21 - FIRE SUPPRESSION

		Author	First Issue	Revised Date
210000 *	Fire Protection	ACE	7/22/22	

* Filed Sub-Bid Required

DIVISION 22 - PLUMBING

		Author	First Issue	Revised Date
220000 *	Plumbing	ACE	7/22/22	

DIVISION 23 - HEATING VENTILATING AND AIR CONDITIONING

		Author	First Issue	Revised Date
230000 *	Heating, Ventilating and Air-Conditioning	ACE	7/22/22	

DIVISION 26 - ELECTRICAL

		Author	First Issue	Revised Date
260000 *	Electrical	ACE	7/22/22	7/29/22
260100 *	Generator (part of 26000 FSB)	ACE	7/22/22	7/29/22

DIVISION 27 – COMMUNICATIONS

		Author	First Issue	Revised Date
270000 *	Communications General (part of 26000 FSB)	BTC	7/22/22	7/29/22
270526 *	Grounding and Bonding (part of 26000 FSB)	BTC	7/22/22	7/29/22
270528 *	Pathways for Communications Systems (part of 26000 FSB)	BTC	7/22/22	7/29/22
270553 *	Identification for Telecommunications Systems (part of 26000 FSB)	BTC	7/22/22	7/29/22
270813 *	Testing Copper Cables (part of 26000 FSB)	BTC	7/22/22	7/29/22
271000 *	Structured Cabling (part of 26000 FSB)	BTC	7/22/22	7/29/22
271100 *	Communications Equipment Room and Fittings (part of 26000 FSB)	BTC	7/22/22	7/29/22
271500 *	Communications Horizontal Cabling (part of 26000 FSB)	BTC	7/22/22	7/29/22
271600 *	Communications Connecting Cords Devices and Adapters (part of 26000 FSB)	BTC	7/22/22	7/29/22

DIVISION 28 – FIRE ALARM

		Author	First Issue	Revised Date
280000 *	Security (part of 26000 FSB)	BTC	7/22/22	7/29/22
	Schedule A, Camera Schedule	BTC	7/22/22	
283100 *	Fire Detection and Alarm System (part of 26000 FSB)	ACE	7/22/22	7/29/22

DIVISION 31 - EARTHWORK

		Author	First Issue	Revised Date
311000	Site Clearing	MELS	7/22/22	
312300	Earthwork	MELS	7/22/22	
312319	Dewatering	MELS	7/22/22	
312500	Erosion and Sedimentation Controls	MELS	7/22/22	
315000	Excavation Support and Protection	MELS	7/22/22	

DIVISION 32 - EXTERIOR IMPROVEMENTS

		Author	First Issue	Revised Date
321216	Asphalt Paving	MELS	7/22/22	
321313	Cement Concrete Handicap Ramps	MELS	7/22/22	
323000	Site Improvements	KZLA	7/22/22	
323129	Wood Fences	KZLA	7/22/22	
328413	Irrigation (Alternate #1)	KZLA	7/22/22	
329000	Planting	KZLA	7/22/22	
329113	Planting Soil	KZLA	7/22/22	
329219	Turf and Grasses	KZLA	7/22/22	

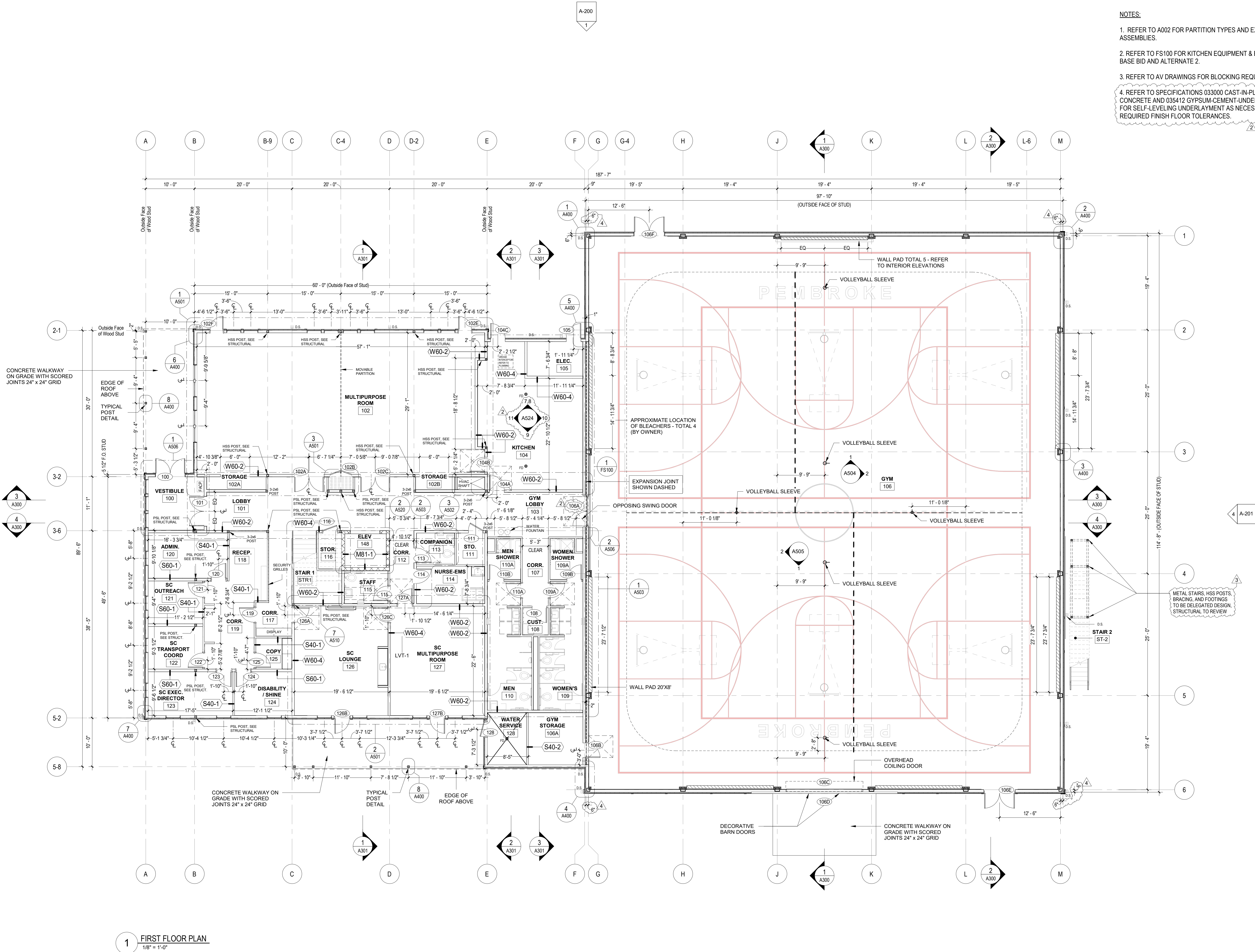
DIVISION 33 - UTILITIES

		Author	First Issue	Revised Date
331000	Water Systems	MELS	7/22/22	8/5/22
333000	Sanitary Sewerage Utilities	MELS	7/22/22	
333600	Septic Tank Systems	MELS	7/22/22	
334000	Storm Drainage Utilities	MELS	7/22/22	

AUTHOR REFERENCE:

ToP	Town of Pembroke, MA
bh+a	Bargmann Hendrie + Architype
KA	Kalin Associates
BSq	B Squared Engineering
MELS	Merrill Engineers and Land Surveyors
KZLA	Kyle Zick Landscape Architecture
ACE	Allied Consulting Engineering
FBRA	Foley Buhl Roberts & Associates
MGA	McArdle Gannon Associates
C3	Commercial Construction Consulting
UEC	Universal Environmental Consultants
CMA	Crabtree McGrath Associates
PAV	Pro AV Systems
ASC	ASC – Hardware
BTC	Building Technology Consulting

END OF TABLE OF CONTENTS



NOTES:

1. REFER TO A002 FOR PARTITION TYPES AND EXTERIOR ASSEMBLIES.
2. REFER TO FS100 FOR KITCHEN EQUIPMENT & EXTENT OF BASE BID AND ALTERNATE 2.
3. REFER TO AV DRAWINGS FOR BLOCKING REQUIREMENTS.
4. REFER TO SPECIFICATIONS 033000 CAST-IN-PLACE CONCRETE AND 035412 GYPSUM-CEMENT-UNDERLAYMENT FOR SELF-LEVELING UNDERLAYMENT AS NECESSARY TO MEET REQUIRED FINISH FLOOR TOLERANCES.

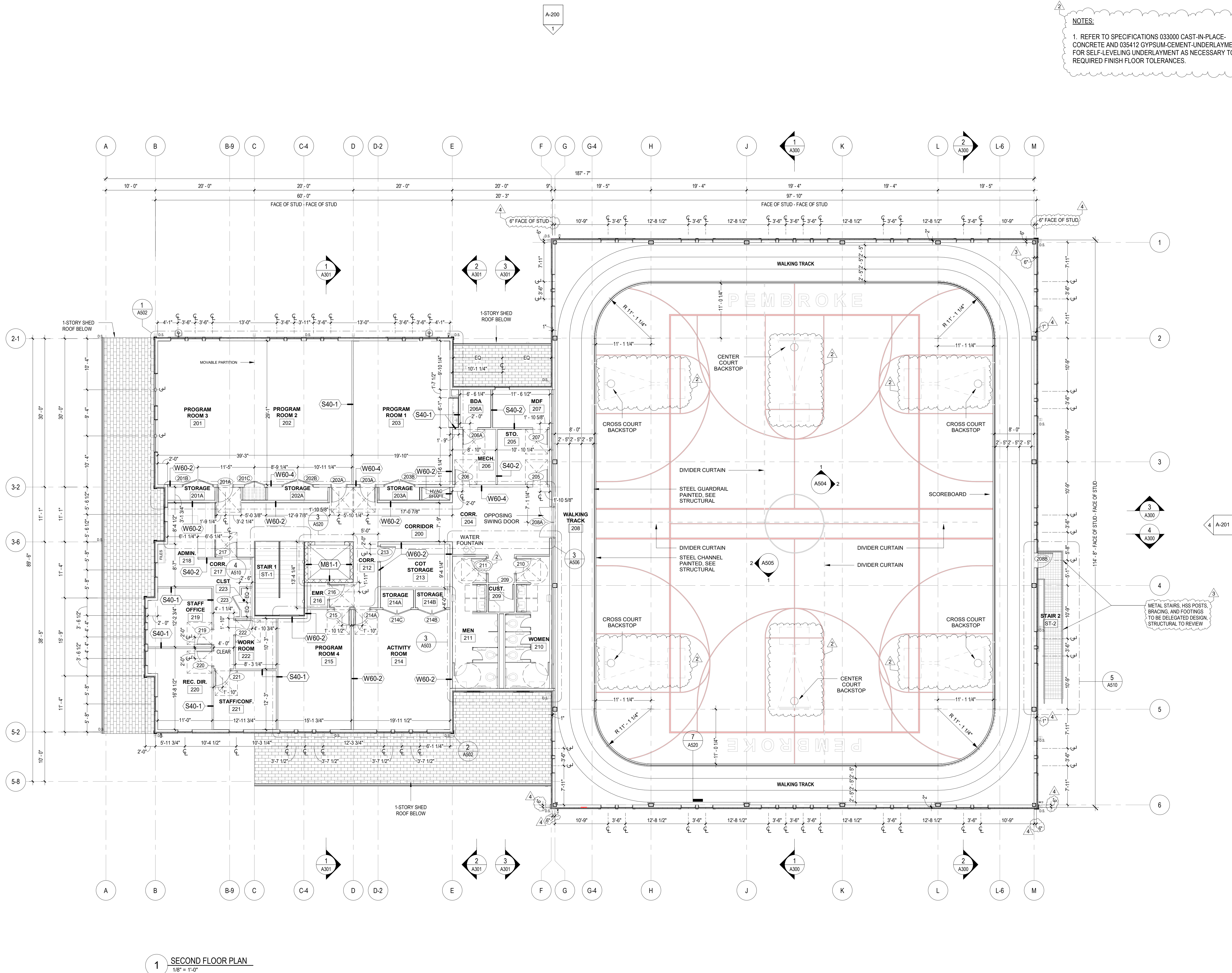
REVISIONS	
2 Addendum #2	08/03/2022
3 Addendum #3	08/05/2022
4 Addendum #4	08/08/2022

DRAWING TITLE
First Floor Plan

DRAWING INFORMATION	
DATE OF ISSUE	07/22/22
Construction Documents	
DESCRIPTION	
SCALE	1/8" = 1'-0" GJALY
3403.00	DRAWN BY
PROJECT #	Penbrooke
	FILE NAME

DRAWING NUMBER

A101



NOTES:
1. REFER TO SPECIFICATIONS 033000 CAST-IN-PLACE CONCRETE AND 035412 GYPSUM-CEMENT-UNDERLAYMENT FOR SELF-LEVELING UNDERLAYMENT AS NECESSARY TO MEET REQUIRED FINISH FLOOR TOLERANCES.

1 SECOND FLOOR PLAN
1/8" = 1'-0"

REVISIONS	
2 Addendum #2	08/03/2022
3 Addendum #3	08/05/2022
4 Addendum #4	08/08/2022

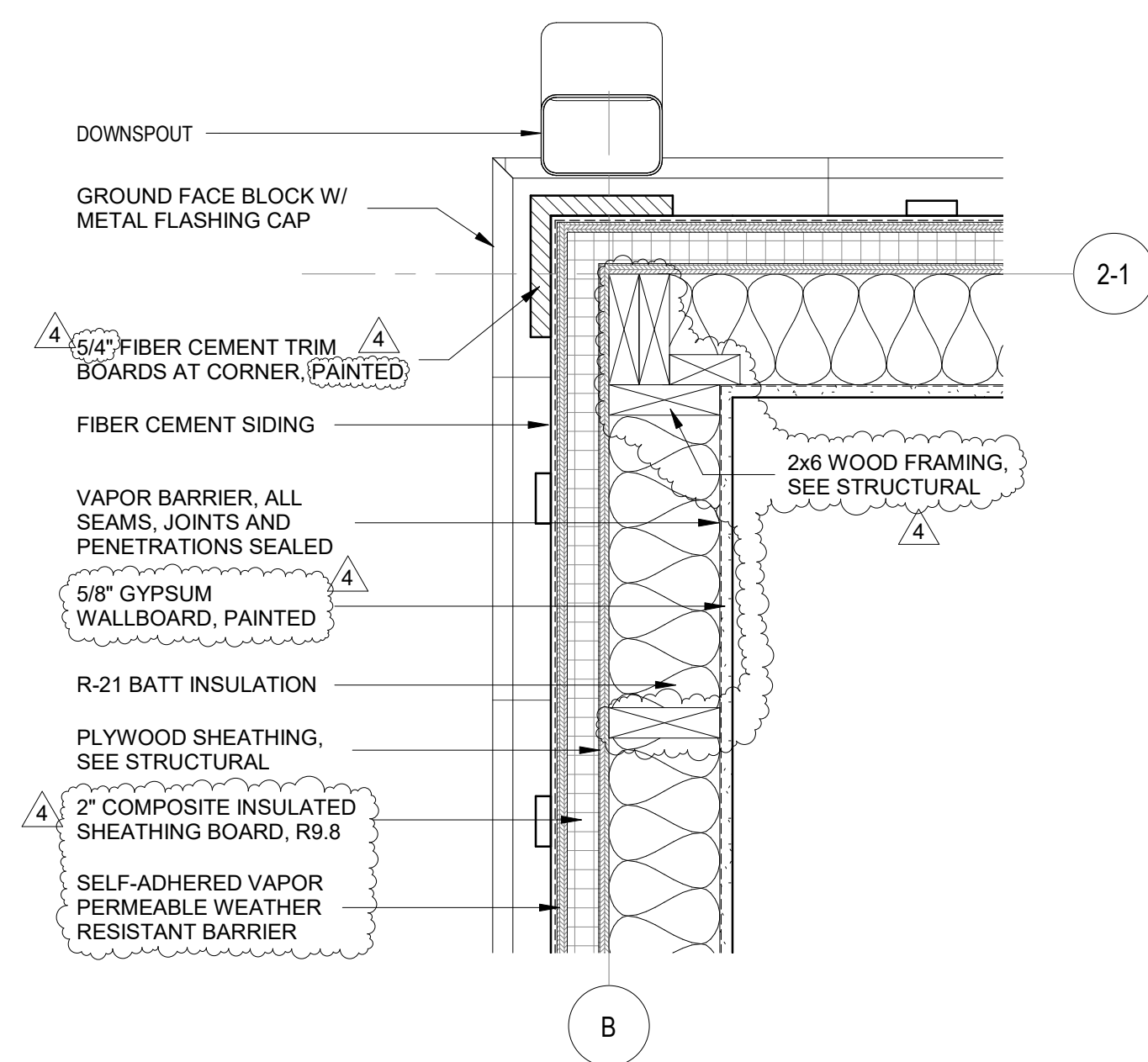
DRAWING TITLE
Second Floor Plan

DRAWING INFORMATION

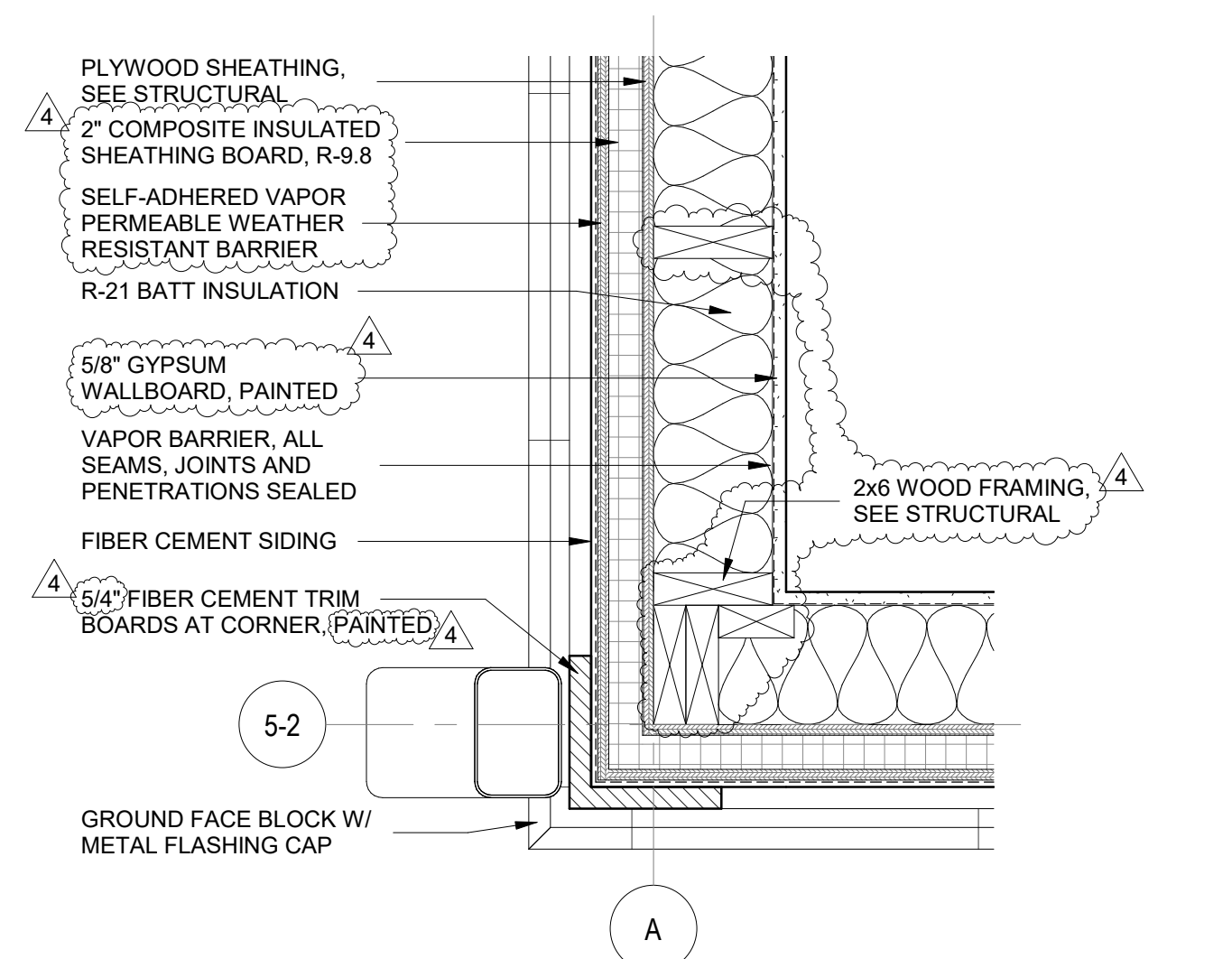
07/22/22
DATE OF ISSUE
Construction Documents
DESCRIPTION
1/8" = 1'-0" GDAV
SCALE DRAWN BY
3403.00 Penbrook
PROJECT # FILE NAME

DRAWING NUMBER

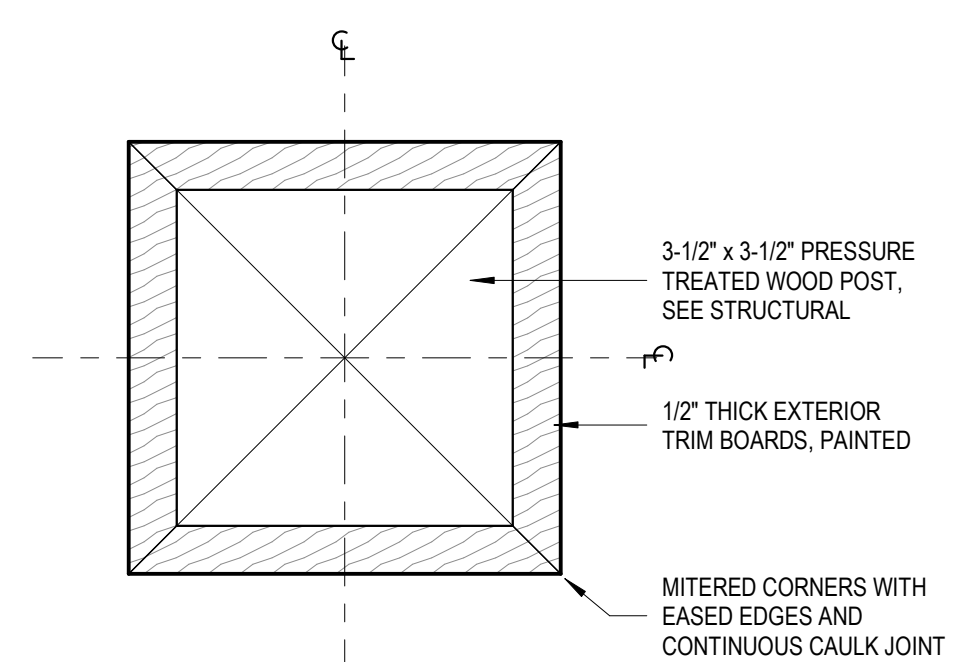
A102



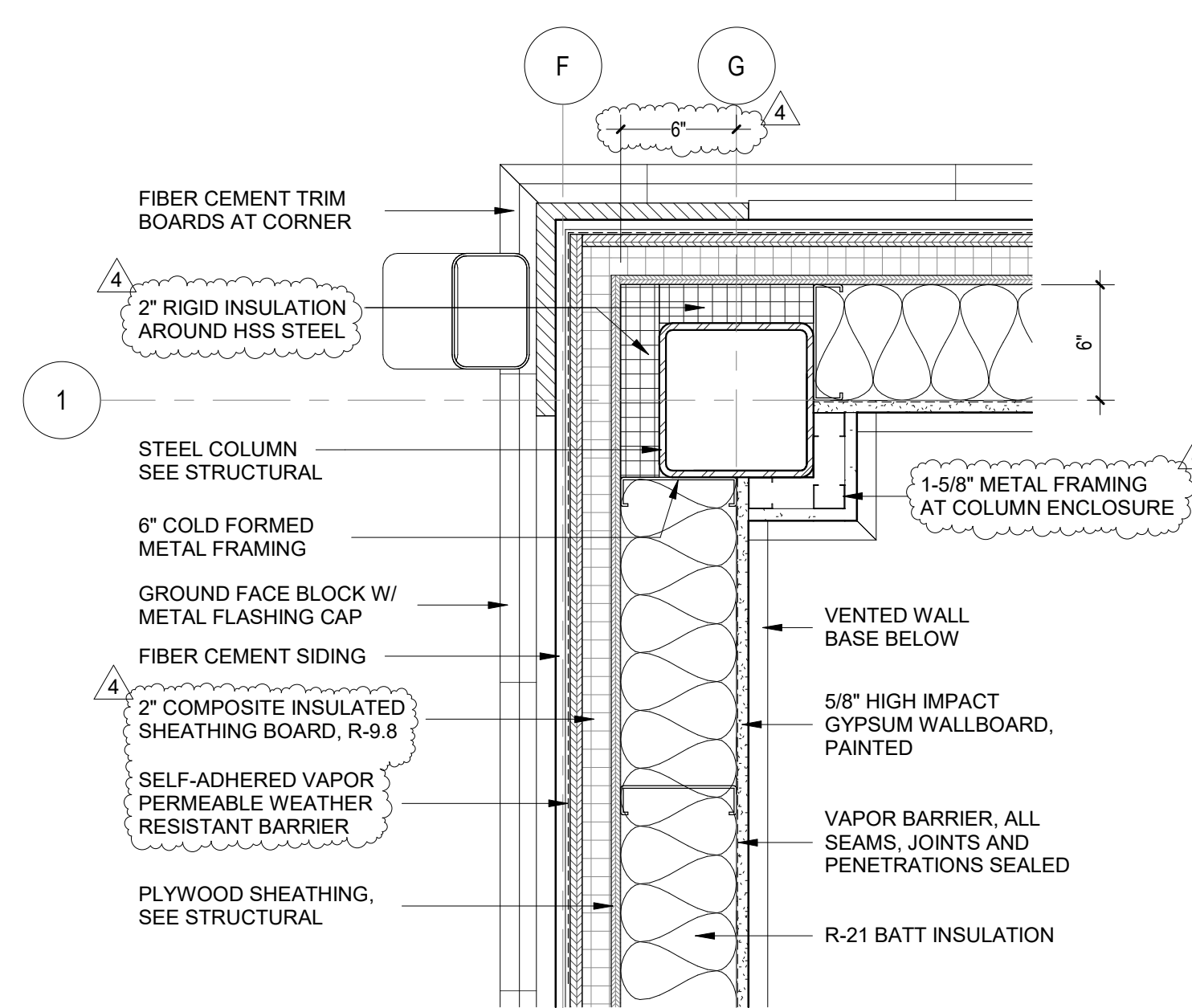
6 CORNER DETAIL AT GYPSUM BOARD 6
1 1/2" = 1'-0"



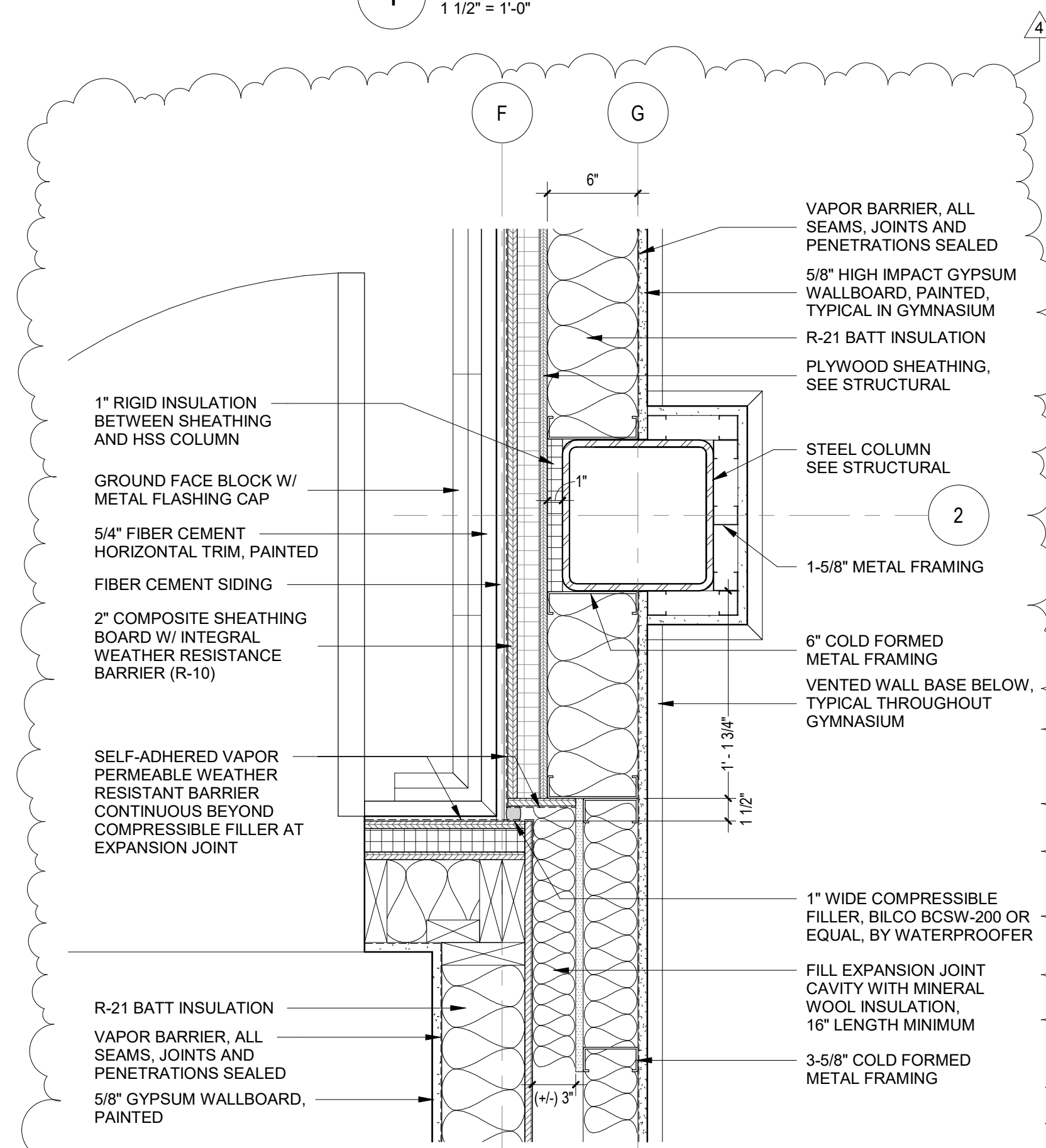
7 CORNER DETAIL AT GYPSUM BOARD 7
1 1/2" = 1'-0"



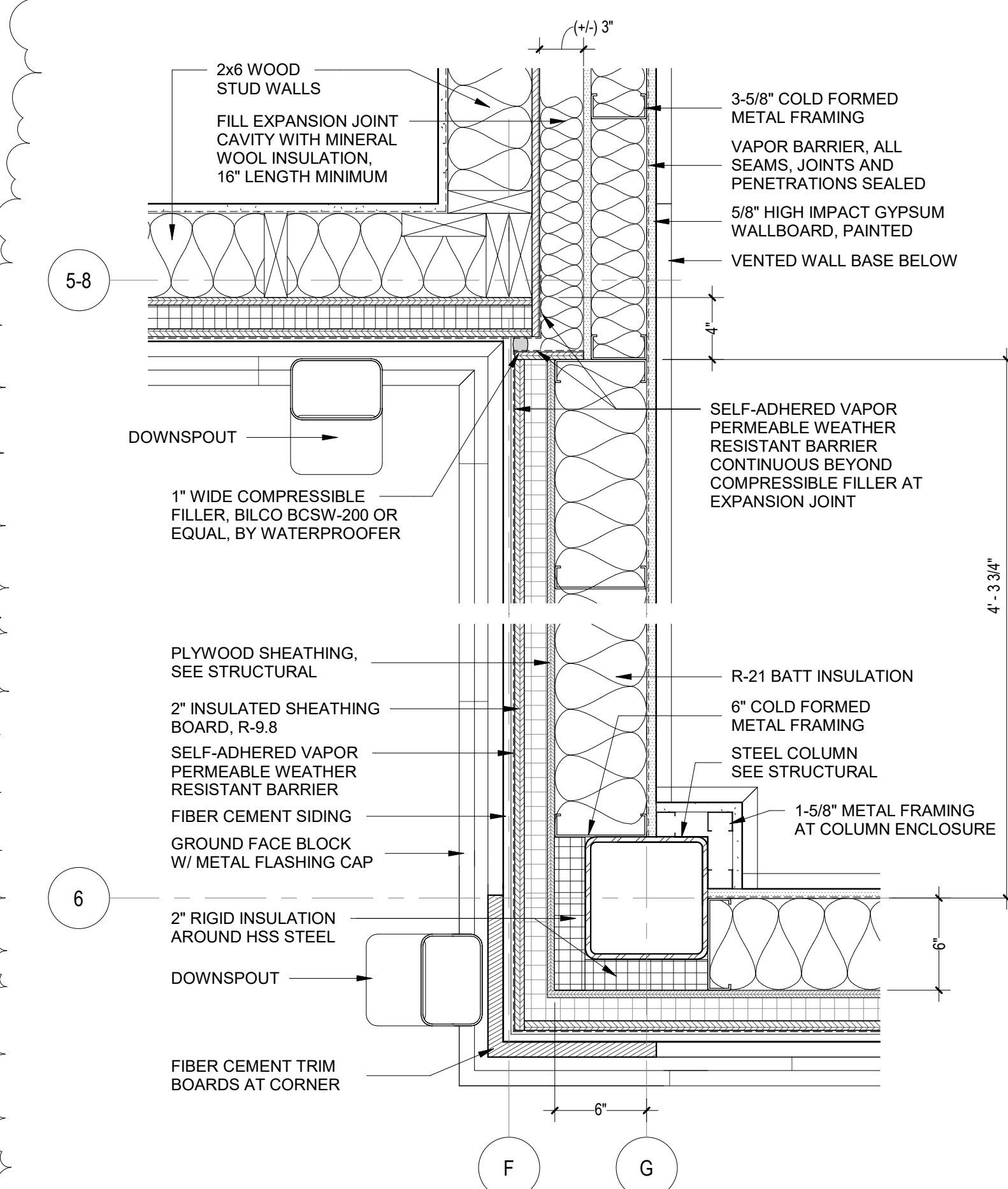
8 POST ENCLOSURE DETAIL
6" = 1'-0"



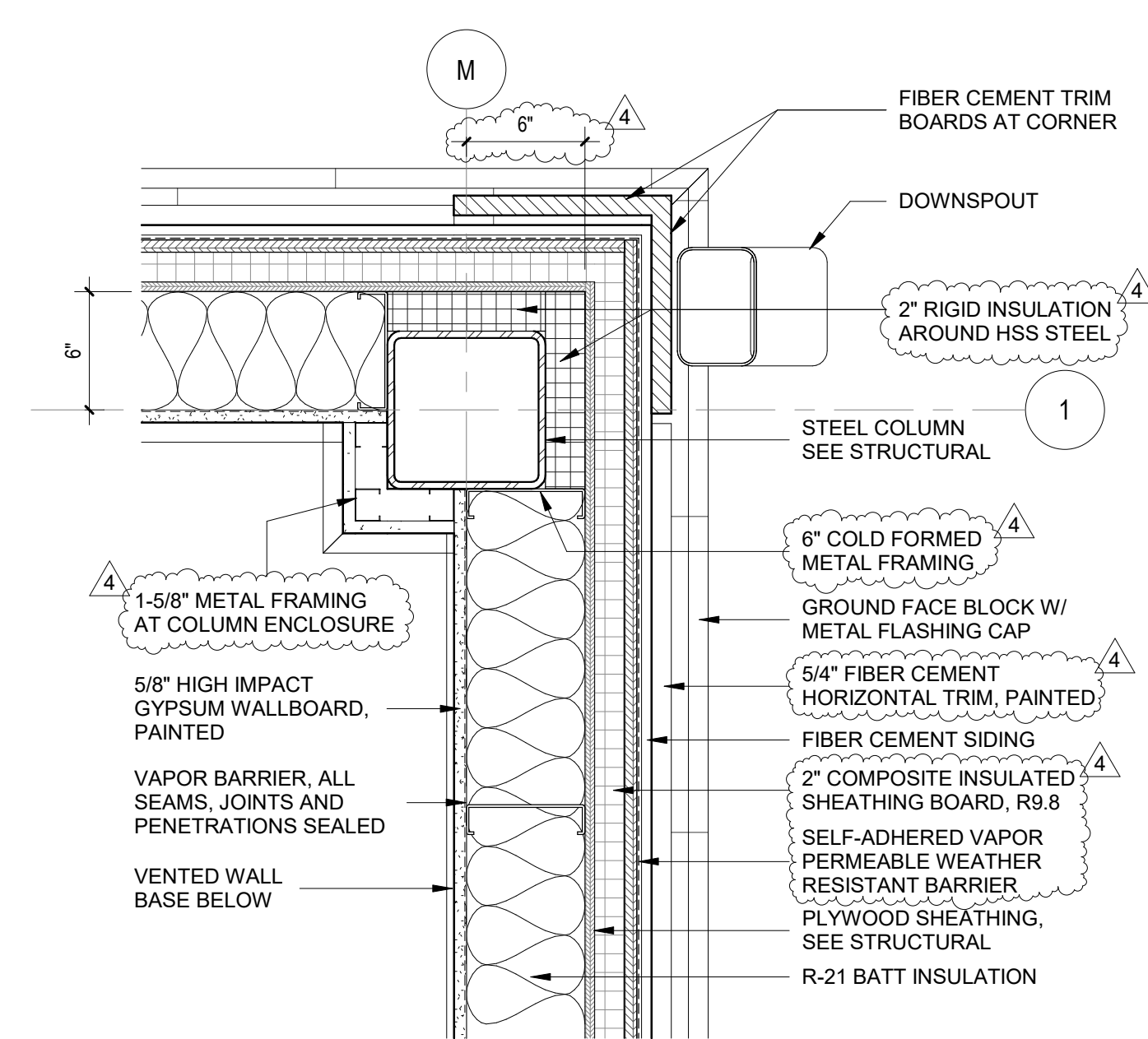
1 TYPICAL OUTSIDE CORNER DETAIL - GYM
1 1/2" = 1'-0"



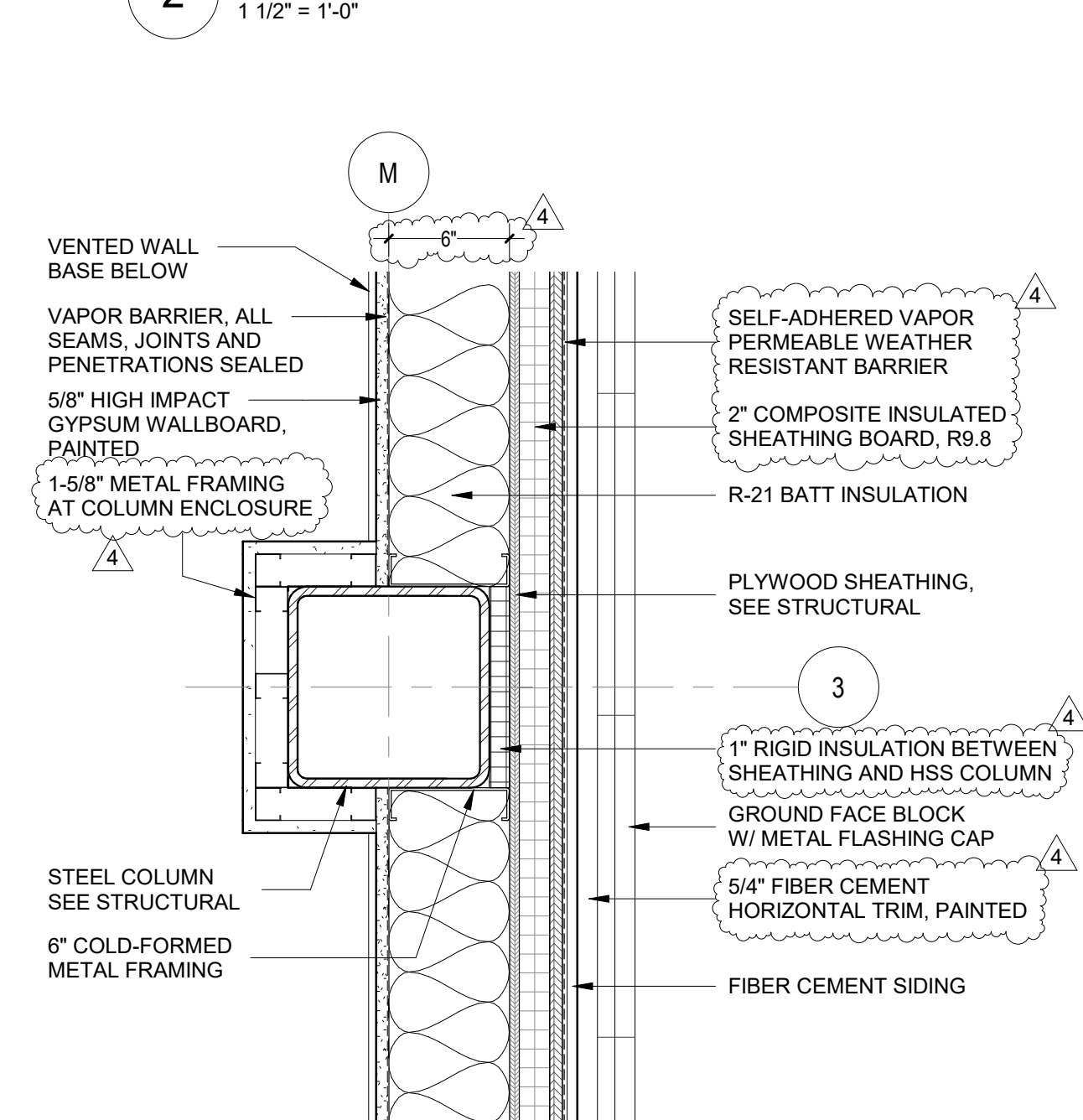
5 EXPANSION JOINT DETAIL - GRIDLINES G AND 2
1 1/2" = 1'-0"



4 CORNER DETAIL AT GYPSUM BOARD 4
1 1/2" = 1'-0"



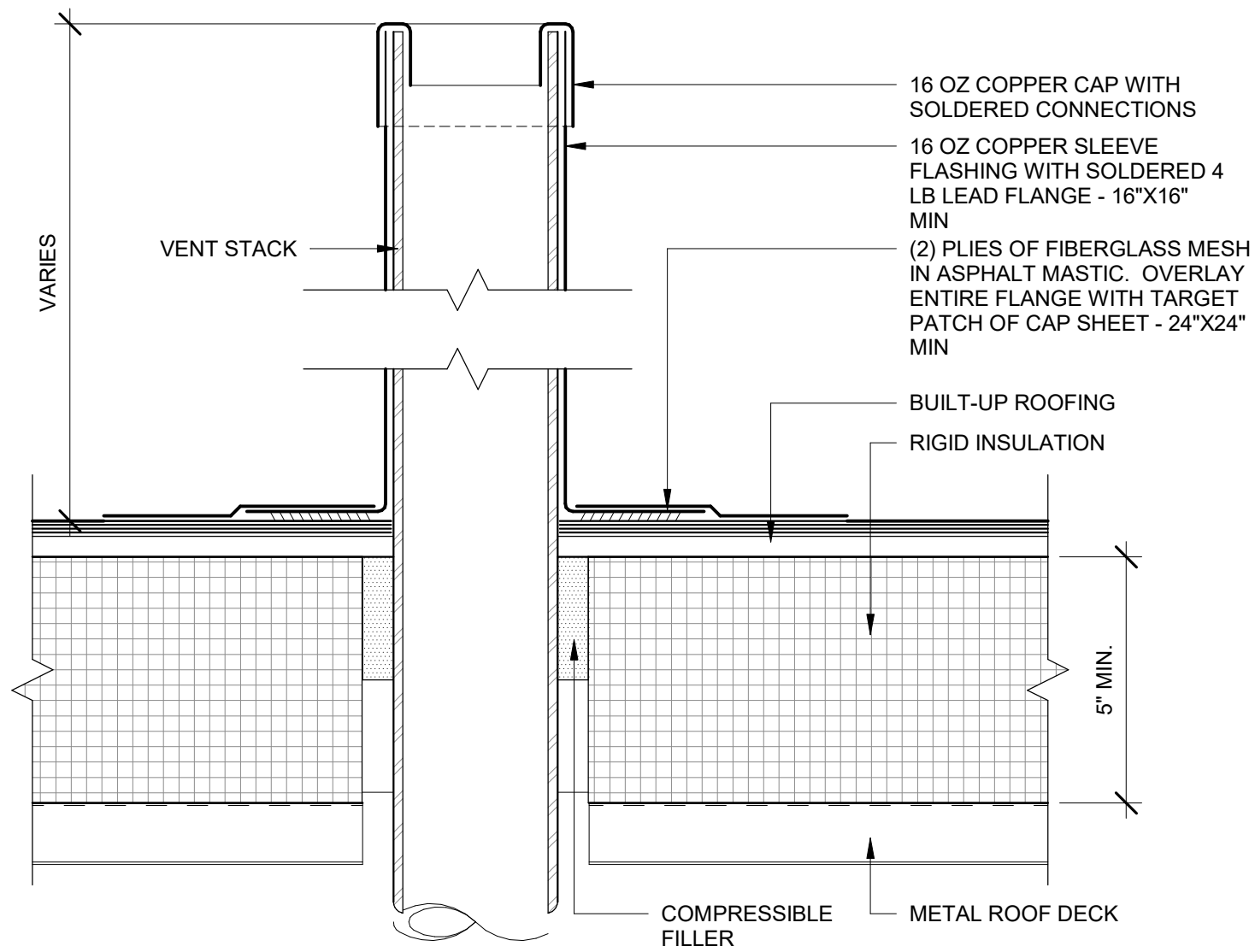
2 CORNER DETAIL AT GYPSUM BOARD 2
1 1/2" = 1'-0"



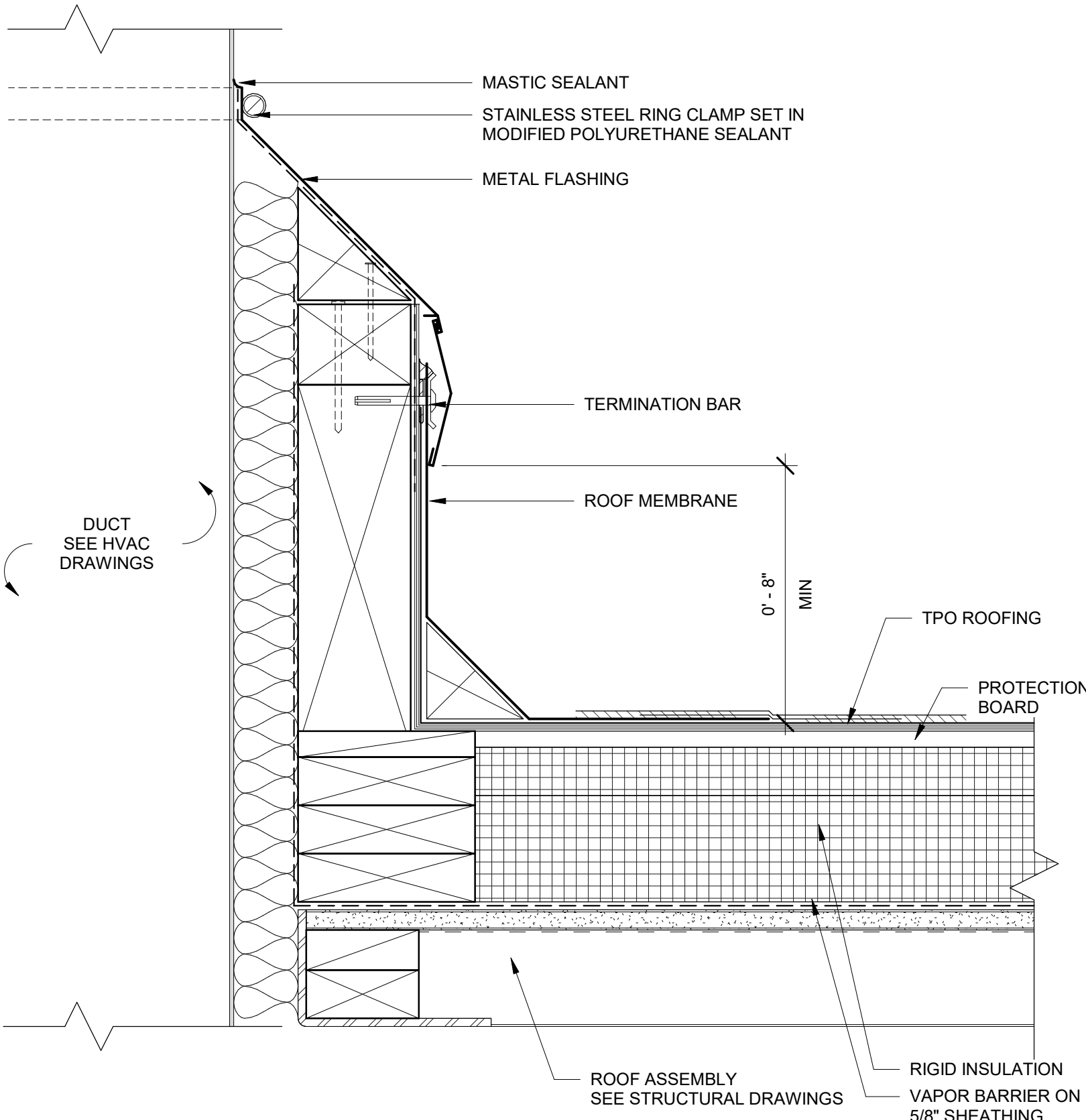
3 TYPICAL COLUMN ENCLOSURE DETAIL - GYM
1 1/2" = 1'-0"

GENERAL NOTE:

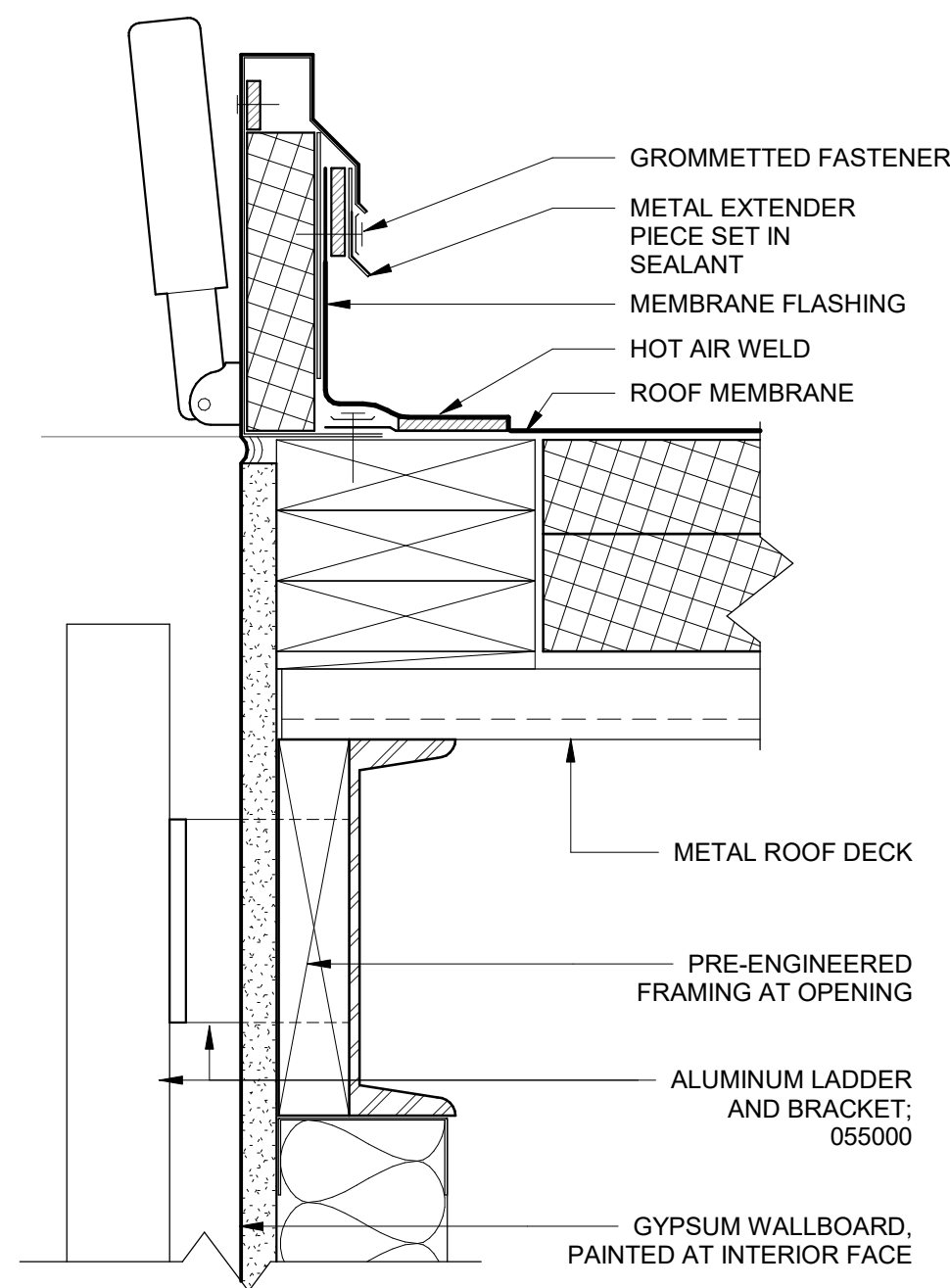
1) GROUND FACE BLOCK MASONRY UNITS TO BE INSTALLED WITH WOVEN CORNERS, MITERED JOINTS AT MASONRY CORNER TRANSITIONS NOT ACCEPTED.



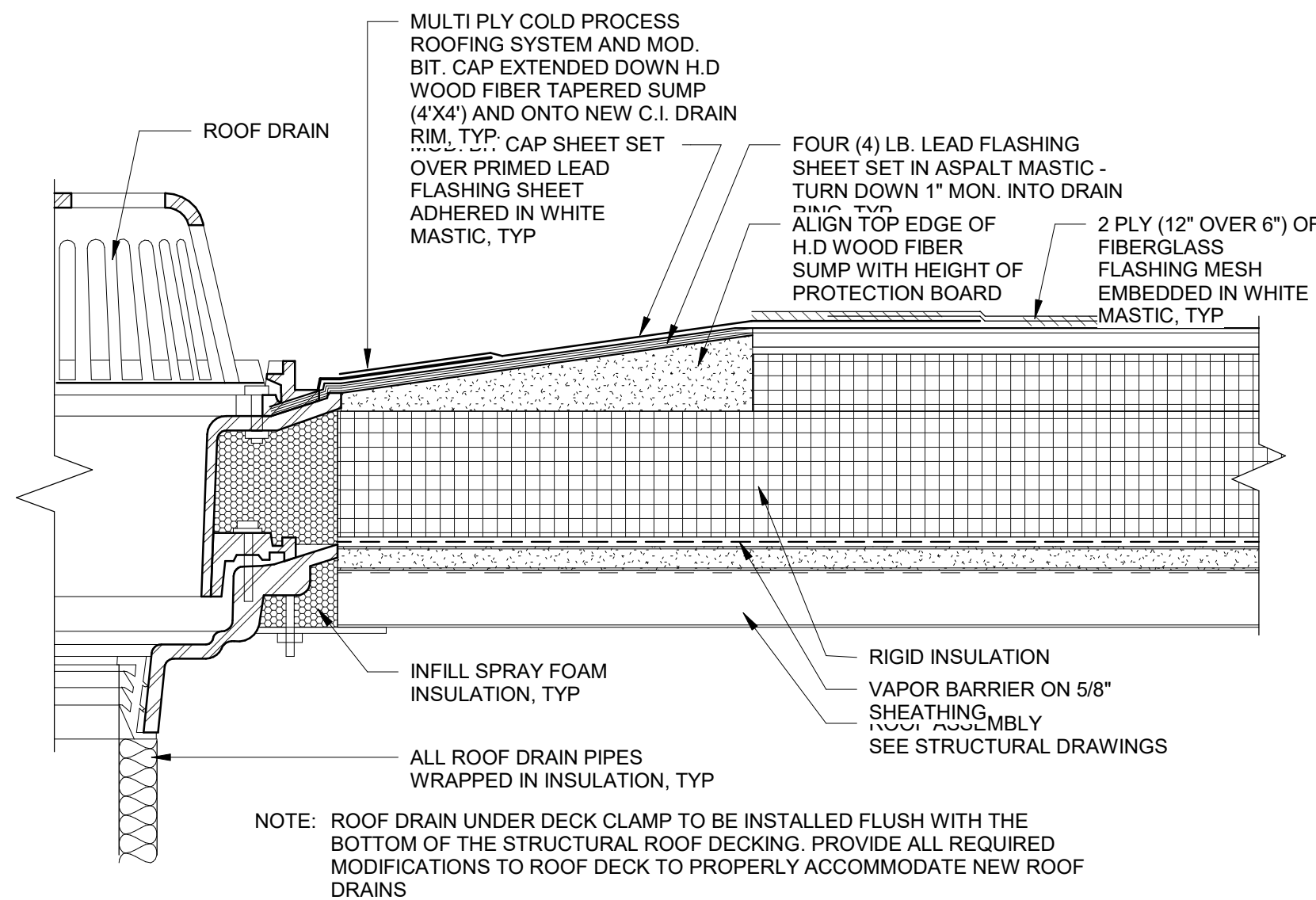
1 TYPICAL PIPE PENETRATION DETAIL
3" = 1'-0"



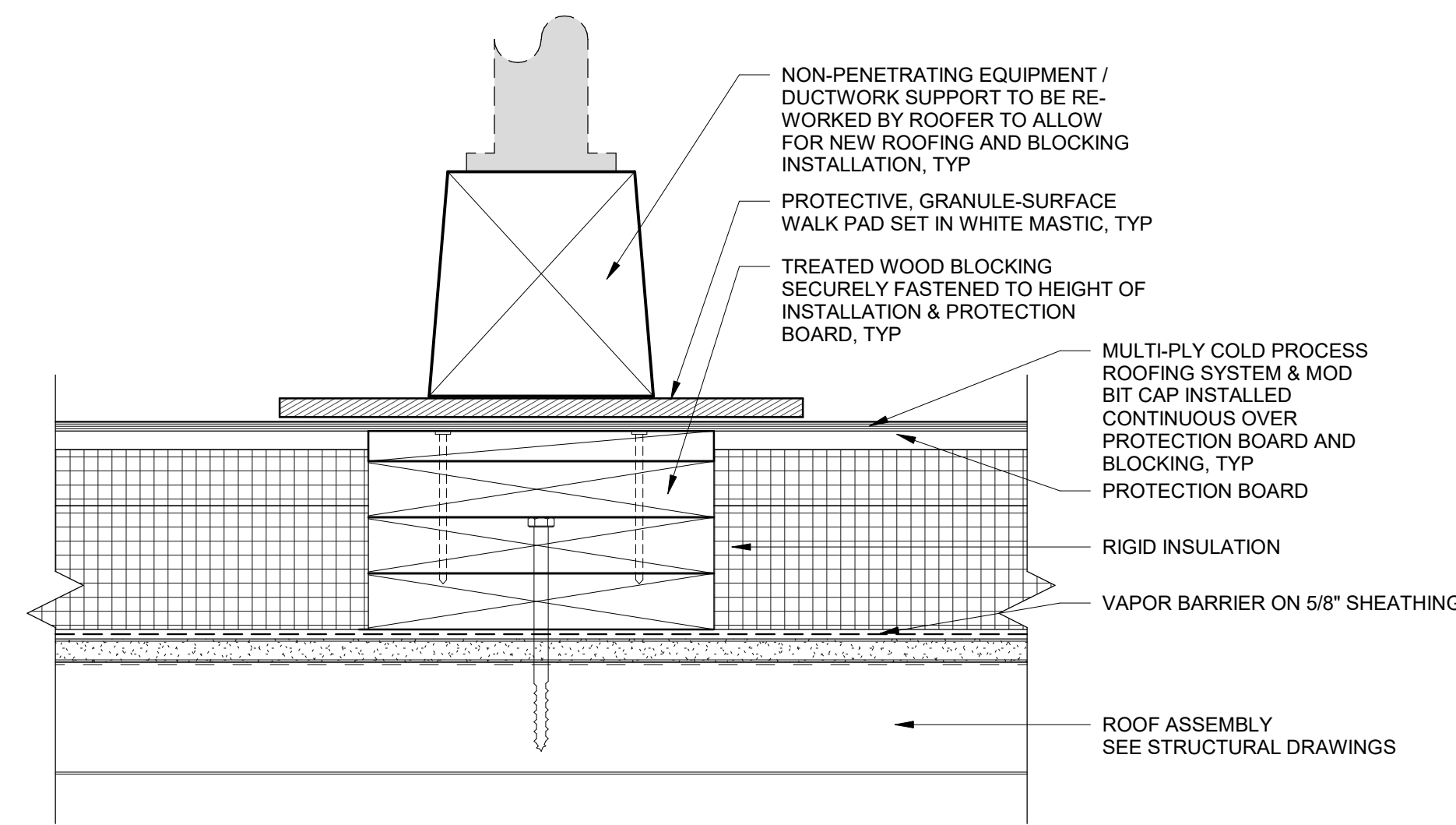
4 TYPICAL DUCT PENETRATION DETAIL
3" = 1'-0"



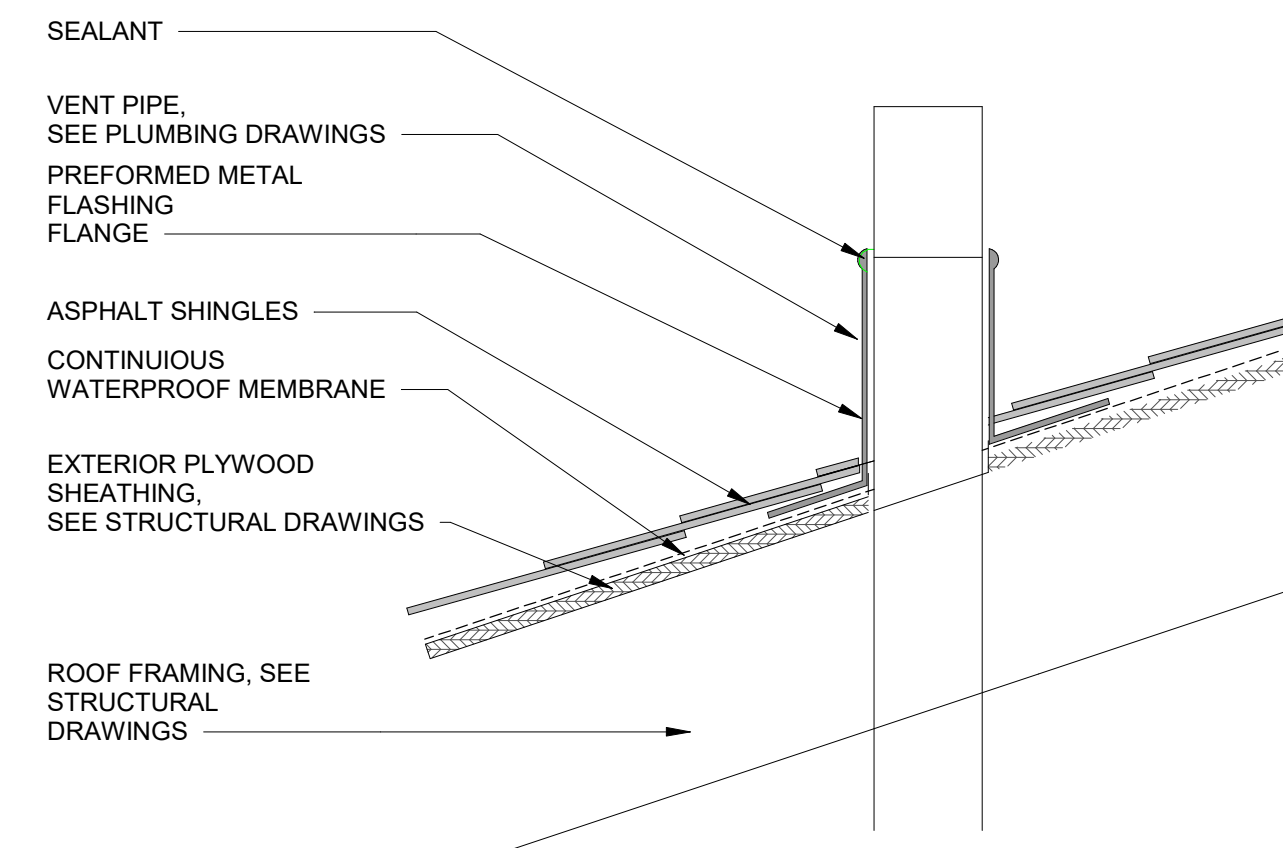
7 ROOF HATCH DETAIL
3" = 1'-0"



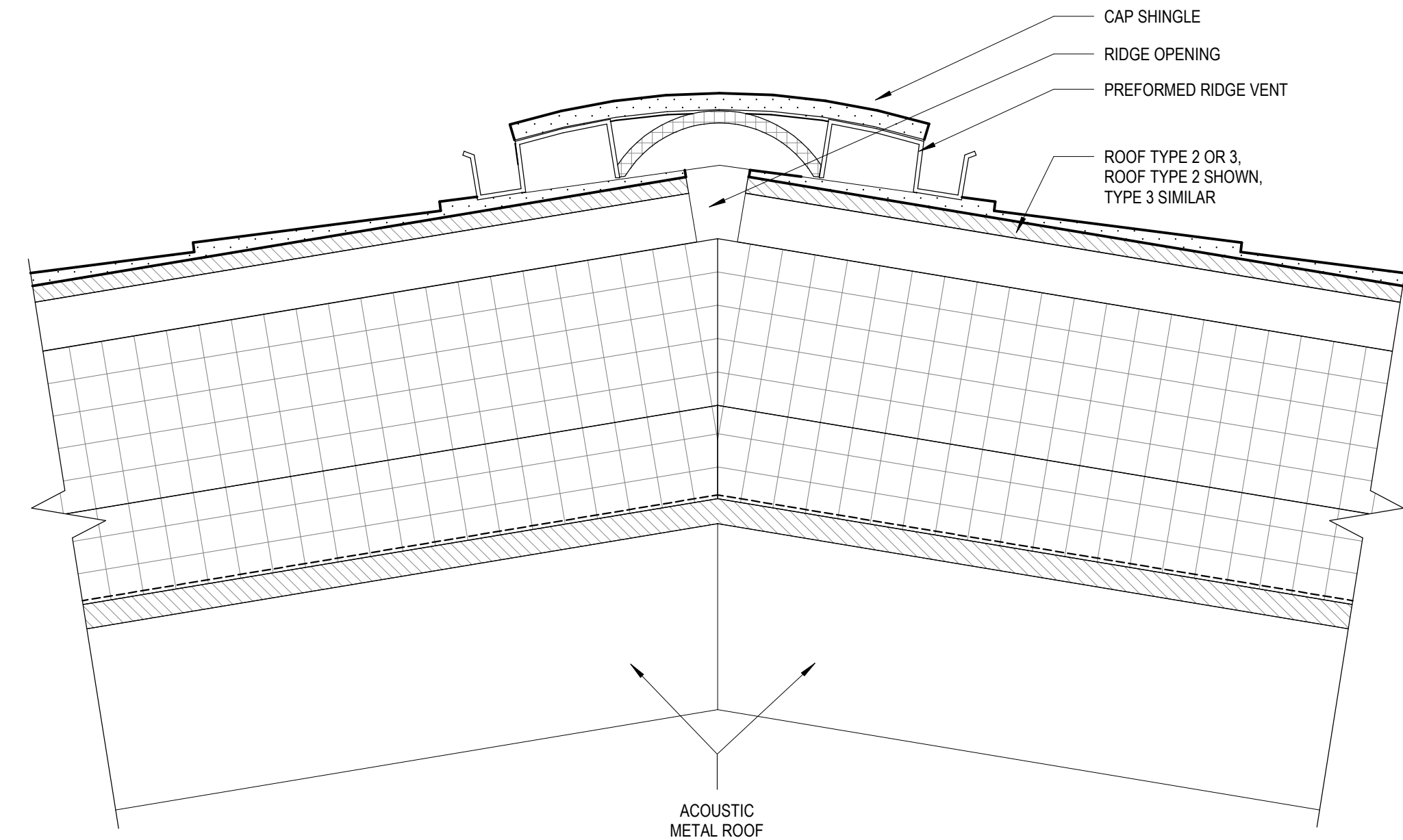
2 TYPICAL ROOF DRAIN DETAIL
3" = 1'-0"



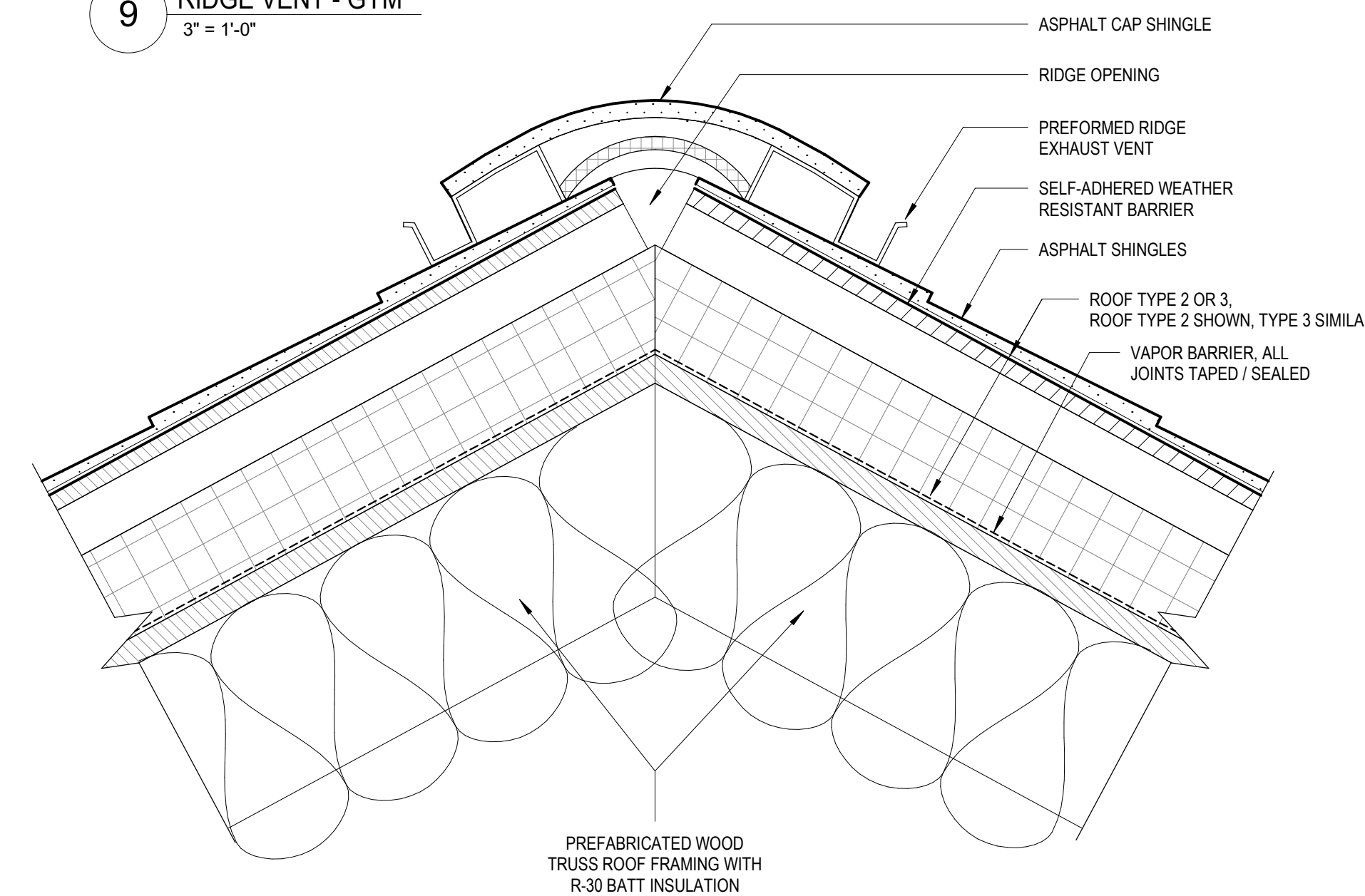
5 TYPICAL NON-PENETRATING EQUIPMENT SUPPORT DETAIL
3" = 1'-0"



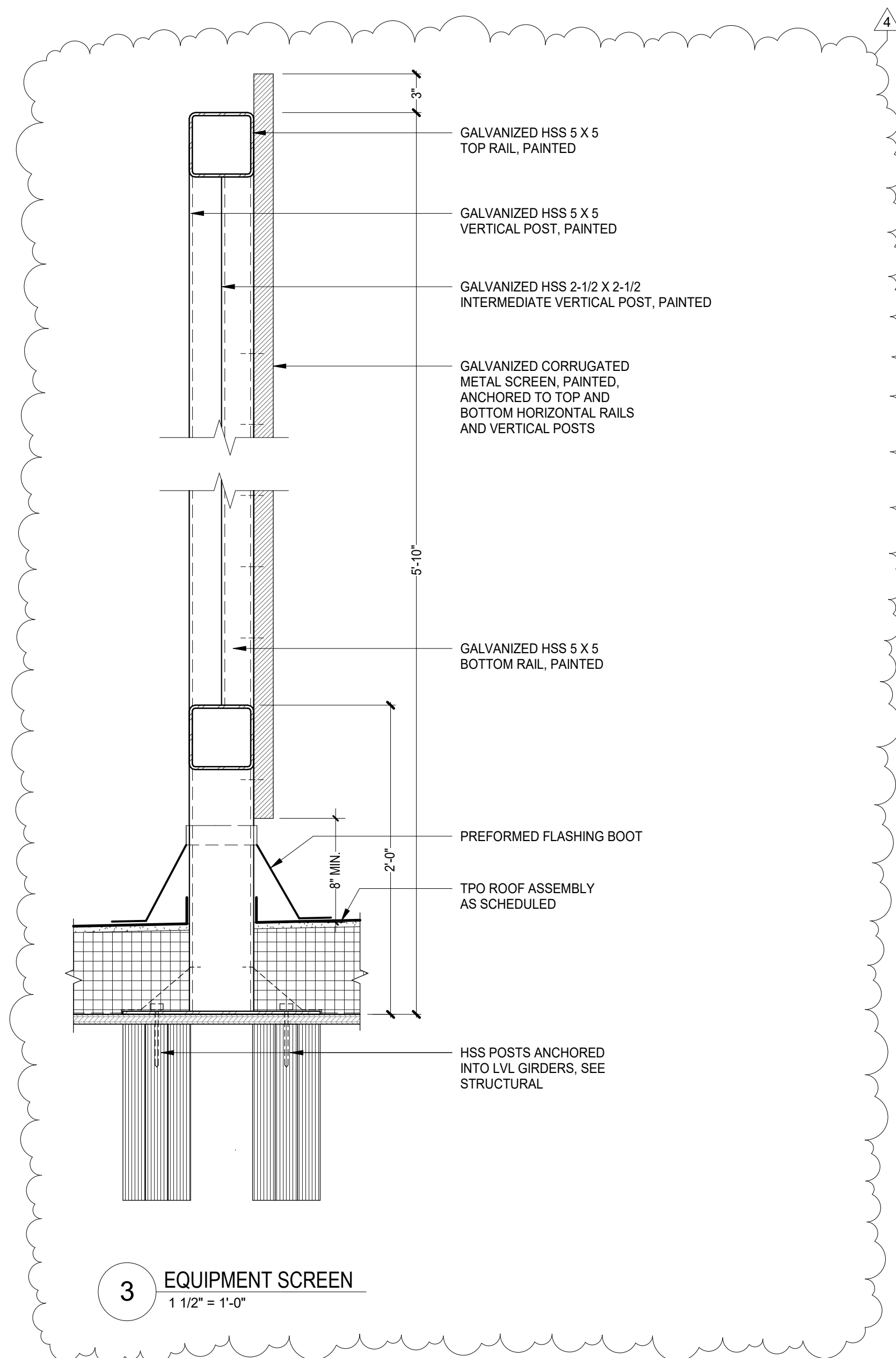
6 PIPE PENETRATION DETAIL AT SHINGLE ROOF
1 1/2" = 1'-0"



9 RIDGE VENT - GYM
3" = 1'-0"



8 RIDGE VENT - WOOD FRAME
3" = 1'-0"



3 EQUIPMENT SCREEN
1 1/2" = 1'-0"

REVISIONS	
4 Addendum #4	08/08/2022

DRAWING TITLE
**Typical Roof
Details**

DRAWING INFORMATION	
07/22/22	DATE OF ISSUE
Construction Documents	DESCRIPTION
As indicated	Author
SCALE	DRAWN BY
3403.00	Penelope
PROJECT #	FILE NAME

DRAWING NUMBER

A410