

Pembroke Police Station

A quick tour for the residents of Pembroke

Requirements for a safe and functional police facility

- The Pembroke Police Station is a fulltime PUBLIC SAFETY FACILITY. Our police station is in operation 24 hours a day, 7 days a week, 365 days a year to provide services to the residents of Pembroke.
- A good facility must serve the needs of the residents by being a secure, professional and user friendly environment. The parking areas must be open and safe. The lobby must be accessible to all and include areas for waiting, information boards, drug take back boxes and have a public restroom. There must also be designated secure quiet areas within the facility where residents can be assured that their privacy will be respected when discussing personal matters with our officers.
- A good facility must serve the needs of the incarcerated by being a safe and secure building with efficient and humane booking and lock-up areas. Adults held in custody must be out of sight and sound from all juveniles within the facility and non criminal juveniles need a safe non locked area in which to wait for their parents, guardians or service providers.
- A good facility must also serve needs of the police officers and administrative staff by providing them a safe and efficient work environment. Secure and private interview rooms with adequate report writing areas are a necessity. In addition, the facility must have secure and adequate rooms to safeguard evidence, property and records and there must be secure parking for the department vehicles, police equipment and seized vehicles and other large property. The facility must provide ample equipment lockers and changing areas along with a private place for the officers to grab a meal or take a break.



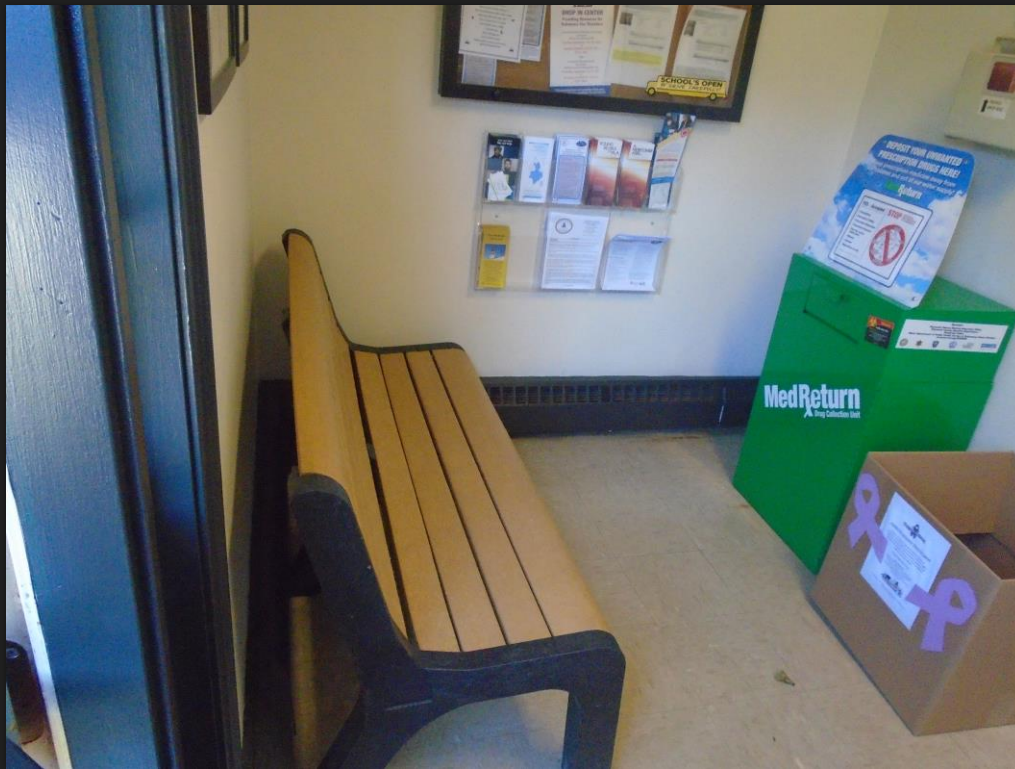
Current Public Parking Area

- Presently we share 5 parking spaces and 1 handicap accessible parking space in the side lot with the Town Hall. The number of available parking is not adequate for the day to day police station activities.
- The Police station generates a great deal of walk-ins requesting and/or delivering reports, reporting crimes or wanting to discuss their problems or concerns with an officer.
- The parking lot is often designated by the courts in custody orders as a mandated spot for parents to exchange children
- There needs to be space available to offer our residents a secure area in which they can make on-line exchanges such as Craigslist or Offer-Up in public under the watchful eye of the police to help prevent them from becoming victims of criminal activities.



Police Station Lobby

Walk-ins, people waiting for information & reports, residents waiting to get their LTC or FID cards or to drop off unwanted prescription drugs, victims and families all share this tiny space



Lobby – Waiting Area and Drug Drop Off



Lobby – Public Service Window

Conference Room

The Conference room is not soundproof or secure and is within hearing distance of the Dispatch and Booking areas.

- This is our “Conference Room”
- This room currently serves many purposes
 - Shift Roll Call Room
 - Briefing Room
 - Victim / Witness Interview Room and waiting area
 - Non-Status Offender Juvenile holding room
 - Bail Room
 - Evidence processing area
 - Employee Lunch and Break Room



E-911 Dispatch

Original dispatch area was designed for a typewriter, a radio and a Registry teletype machine. Dispatch now holds two dispatch consoles with NextGen 911 multi- screen computers, our in-house IMC Records Management system, a DCJIS computer, 2 radio consoles, station surveillance system and printers

The E-911 Dispatch Center and front desk is run by a single police officer

- Desk Officer is responsible for:
 - Walk-ins to Service Window & Lobby Security
 - Radio – Dispatch
 - Pembroke Police Department
 - Surrounding Departments monitoring
 - Plymouth County Radio Broadcasts
 - BAPERN Statewide Radio Broadcasts
 - E-911 Emergency Medical Dispatch
 - Business / Non-Emergency Telephone Calls
 - Station Security
 - Prisoner Watch and Security
 - No bathroom or breakroom area. Officers must leave dispatch area unattended to use facilities down the hall



Prisoner Areas - Garage



- The garage is the station's main storage. It houses the patrol motorcycle, 4 patrol bicycles, bike racks, tires, cruiser equipment, boat gear, a gun cleaning table, soda machine, snow blower, gas cans and more.
- Vehicles awaiting crime scene processing are stored here
- In addition, the garage also serves as the "Sally Port" and is the first stop when a prisoner is brought to the station
- A good Sally Port should;
 - Be drive through to avoid accidents while backing
 - Be free of objects that can be used as weapons
 - Be free of sharp edged concrete corners
 - Have direct access to a holding cell for combative prisoners

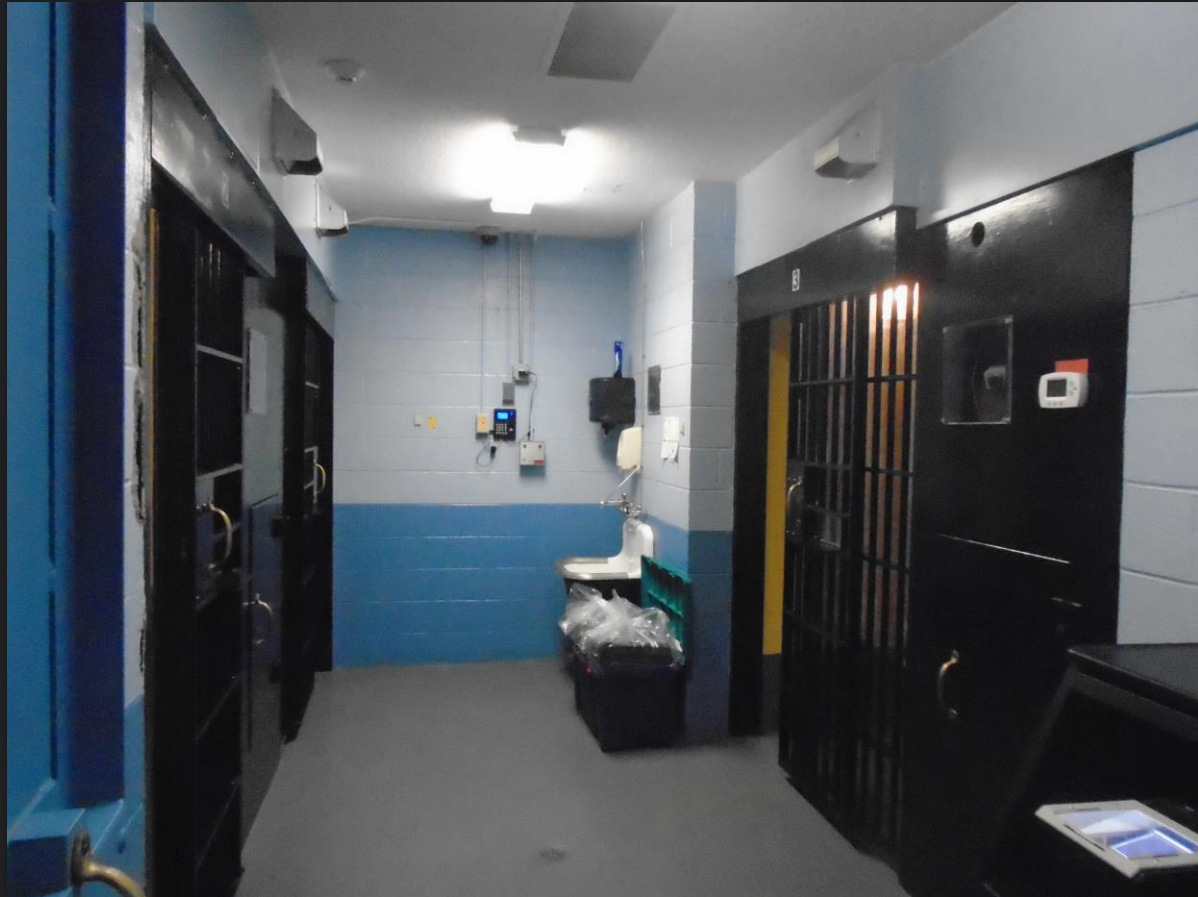
Cell Block

The photo on the left was the original booking room. With the addition of computers, printers, breath test machine, evidence and property processing and prisoner property lockers, the arrestees are now secured to a bar in the hallway for processing.



Male Cells

The standards for cells in 1978 allowed for the open bar design. The cells have been covered in plexi-glass as an anti-suicide measure. A heat and air conditioning unit is located in the attic to service the cells. Toilets, plumbing and masonry are out dated and do not meet today's standards.



Juvenile & Female Cells

Today's standards require the juvenile cell to be out of sight and sound from adults. The photo on left shows the close proximity of the juvenile cell to booking. All toilet and sink units do not meet code.



Juvenile Cell – Close Proximity to Booking



Female Cell

Work Areas

The Court Prosecutor and the Detectives use the Conference Room to interview people due to the lack of office space



Court Prosecutor's Office



Detective's Office - Upstairs

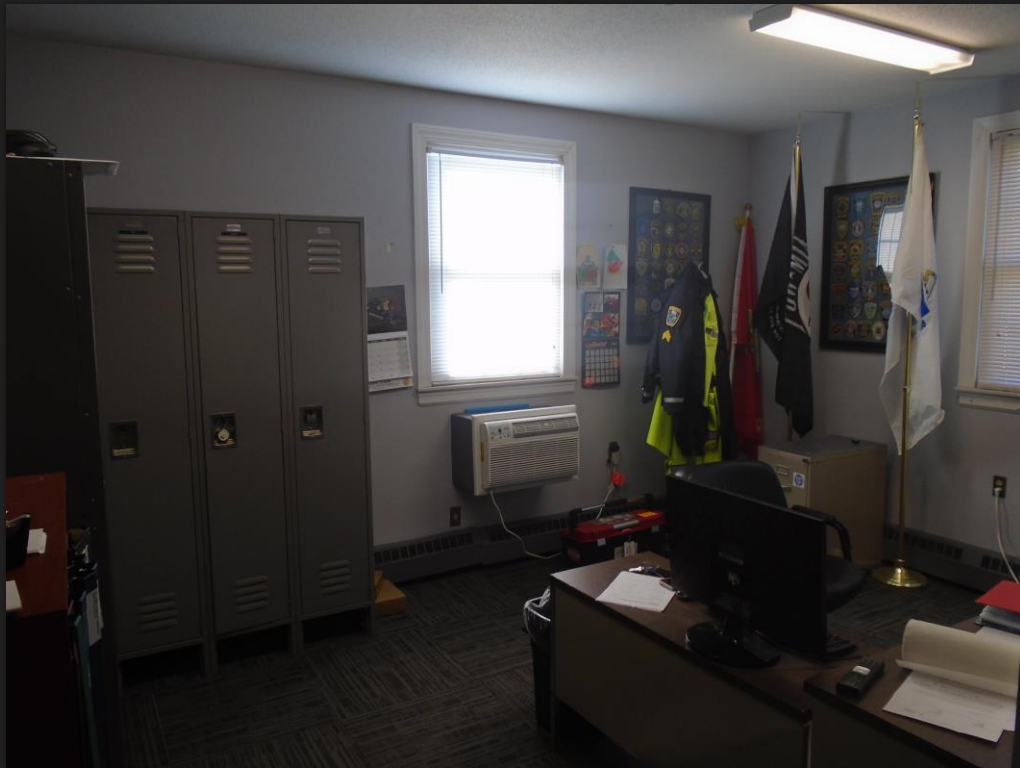
Work Areas

In 1978 the civilian staff was one person. Today we have the Secretary and Assistant to the Chief sharing a single office.



Work Areas

The Five (5) Sergeants share a single desk and computer. Sergeant's lockers were moved due to lack of basement space. The reports writing room was the former records storage area. Work benches and stools were installed to allow for 2 work stations.



Sergeants (5) Office



Report Writing Room

Work Areas

Every usable space is in service. SWAT members must secure their protective gear and weapons as well as their training materials. SWAT members are also the Department Firearms Instructors and Armorers.



SWAT Room – 3 SEMLEC Team Members



Station Kitchenette at Rear Door

Storage Areas

Police Departments are responsible to maintain and store many thousands of records each year in addition to legacy records. Safekeeping personal properties requires additional space which is presently unavailable.



Basement - Records Storage and E-911 Server



Attic – Property Storage (unheated)

Basement

In the 1980's parts of the basement were built out to create the Pembroke Emergency Management Operations Center. This area includes a small office, radio room, and a shelter area with a sink and refrigerator. The office is now used for storage and the other areas are used for classroom training.



Training Room (formerly PEMA shelter)



Department Server (formerly PEMA shelter)

Basement cont'd

The male locker room was added in the 1980's with some new lockers added in the past 4 years. There is not enough space for every officer to have a locker and the lockers are not sufficient to store an officer's duty gear.



Shower is inoperable - no benches



Not enough lockers for employees

Basement cont'd

Several Officers have lockers in the boiler room area of the basement as shown on the left. The photo on the right shows the door that officers use to enter the basement from the rear parking lot.



Boiler / Male Lockers and Changing Area



Employee Entrance to Locker Room

Police Parking Lot

The rear parking lot was reconfigured to allow for 36 parking spaces. The Police Department has 27 vehicles and trailers. This does not include police employees personal vehicles. On Monday nights we often find overflow cars from Town Hall parked amongst the marked cruisers.



Rear Parking Lot



Police Impound Vehicle Storage (right)