

MATERIAL NOTES:

1. PROVIDE EXPANSION JOINTS AT ALL CURBS, WALLS, STEPS, LIGHT POLE BASES, PULL BOXES, MANHOLES, ETC. AND AS SHOWN ON PLAN.
2. CONTRACTOR SHALL PROVIDE SLEEVES FOR ALL UTILITY LINE CONNECTIONS.
3. CONTRACTOR SHALL COORDINATE LOCATION OF ALL UTILITIES (LINES, DUCTS, CONDUITS, SLEEVES, FOOTINGS, ETC.) WITH LOCATIONS OF PROPOSED LANDSCAPE ELEMENTS (WALLS, FENCE, FOOTINGS, TREE ROOTBALLS, PROPOSED LIGHTING FOOTINGS, ETC.). CONTRACTOR SHALL REPORT ANY DISCREPANCIES TO LANDSCAPE ARCHITECT PRIOR TO CONTINUING WORK.
4. LIMIT OF WORK LINE IS NOTED ON DRAWINGS. CONTRACTOR IS RESPONSIBLE FOR ALL DAMAGE DUE TO OPERATIONS INSIDE AND OUTSIDE OF THE CONTRACT LIMIT LINE. ANY AREAS OUTSIDE THE LIMIT OF WORK THAT ARE DISTURBED SHALL BE RESTORED TO ITS ORIGINAL CONDITION AT NO ADDITIONAL COST TO THE OWNER.

LAYOUT NOTES:

1. ALL LINE AND GRADE WORK PER DRAWINGS AND SPECIFICATIONS SHALL BE LAID OUT BY A REGISTERED CIVIL ENGINEER OR SURVEYOR ENGAGED BY THE CONTRACTOR. LAYOUT SHALL BE CONFIRMED BY LANDSCAPE ARCHITECT BEFORE INSTALLATION.
2. ALL LINES AND DIMENSIONS ARE PARALLEL OR PERPENDICULAR TO THE LINES FROM WHICH THEY ARE MEASURED UNLESS OTHERWISE INDICATED.
3. STORAGE AREAS FOR CONTRACTOR'S EQUIPMENT AND MATERIALS SHALL BE IN AND WITHIN LIMITS OF WORK AS SHOWN ON PLANS AND AS APPROVED BY THE LANDSCAPE ARCHITECT.
4. CONTRACTOR SHALL VERIFY ALL EXISTING CONDITIONS IN THE FIELD AND REPORT ANY DISCREPANCIES IN THE SITE SURVEY TO THE LANDSCAPE ARCHITECT PRIOR TO STARTING WORK.
5. ALL LAYOUTS FOR WALKS AND PATHS SHALL BE ADEQUATELY STAKED BY THE CONTRACTOR AND APPROVED BY THE LANDSCAPE ARCHITECT PRIOR TO CONSTRUCTION.
6. THE CONTRACTOR SHALL ESTABLISH PERMANENT CONSTRUCTION BENCH MARKS. MAINTAIN ALL ESTABLISHED BOUNDS AND BENCH MARKS AND REPLACE AS DIRECTED ANY WHICH ARE DESTROYED OR DISTURBED.
10. LOAM AND SEED ALL DISTURBED AREAS THAT ARE NOT PROPOSED AS PAVEMENT UNLESS OTHERWISE INDICATED ON PLANS.
11. WITHIN THE LIMIT OF WORK, CONTRACTOR SHALL IDENTIFY ALL TREE LIMBS LOWER THAN 10' ABOVE THE GROUND SURFACE THAT MAY BE VULNERABLE TO EQUIPMENT DAMAGE. NOTIFY THE LANDSCAPE ARCHITECT PRIOR TO STARTING WORK BENEATH ANY OF THESE LIMBS FOR REVIEW. CONTRACTOR MAY REQUEST PERMISSION TO PRUNE OR TIE BACK LIMBS; TO BE REVIEWED AND APPROVED BY LANDSCAPE ARCHITECT. CONTRACTOR IS RESPONSIBLE FOR ANY DAMAGE TO TREE LIMBS DUE TO CONTRACTOR OPERATIONS.
12. ALL SITE AMENITIES, PAVEMENT MARKINGS, AND SIGNS TO BE FIELD LOCATED AND APPROVED BY THE LANDSCAPE ARCHITECT PRIOR TO INSTALLATION.
13. AUTOCAD FILE WILL BE PROVIDED TO THE CONTRACTOR TO LAYOUT SITE IMPROVEMENTS.

PLANTING NOTES:

1. IF DISCREPANCIES EXIST BETWEEN THE NUMBER OF PLANTS DRAWN ON THE PLANTING PLAN AND THE NUMBER OF PLANTS IN THE PLANT LIST, THE PLANTING PLAN SHALL GOVERN.
2. ALL NEW PLANT MATERIAL SHALL CONFORM TO THE MINIMUM GUIDELINES ESTABLISHED FOR NURSERY STOCK PUBLISHED BY THE AMERICAN ASSOCIATION OF NURSERYMEN, INC. IN ADDITION, ALL NEW PLANT MATERIAL FOR THE PROJECT SHALL BE OF SPECIMEN QUALITY.
3. ALL NEW PLANTS TO BE BALLED AND BURLAPPED OR CONTAINER-GROWN, UNLESS OTHERWISE NOTED ON THE PLANT LIST.
4. THE CONTRACTOR SHALL SUPPLY ALL NEW PLANT MATERIAL IN QUANTITIES SUFFICIENT TO COMPLETE THE PLANTING SHOWN ON THE DRAWINGS.
5. ANY PROPOSED SUBSTITUTIONS OF PLANT SPECIES SHALL BE MADE WITH PLANTS OF EQUIVALENT OVERALL FORM, HEIGHT, BRANCHING HABIT, FLOWER, LEAF, COLOR, FRUIT AND CULTURE, AND ONLY AFTER WRITTEN APPROVAL OF THE LANDSCAPE ARCHITECT.
6. ALL NEW PLANTS SHALL BE TAGGED AND APPROVED BY THE LANDSCAPE ARCHITECT AT THE NURSERY PRIOR TO DIGGING OR DELIVERY TO THE SITE.
7. CONTRACTOR SHALL LOCATE AND VERIFY ALL EXISTING UTILITY LINES PRIOR TO PLANTING AND SHALL REPORT ANY CONFLICTS TO THE LANDSCAPE ARCHITECT.
8. STAKE LOCATION OF ALL PROPOSED PLANTING FOR APPROVAL BY LANDSCAPE ARCHITECT PRIOR TO THE COMMENCEMENT OF PLANTING.
9. NEW SHRUBS AND GROUND COVER SHALL BEAR THE SAME RELATIONSHIP TO GRADE AS IT BORE TO PREVIOUS GRADE. TREES SHALL BE SET 3" HIGHER THAN PREVIOUS GRADE. NO TREES SHALL BE PLANTED BEFORE ACCEPTANCE OF ROUGH GRADING.
10. ALL PLANT BEDS TO RECEIVE THREE INCHES (3") OF BARK MULCH AS PER SPECIFICATIONS.
11. ALL EXISTING TREES TO REMAIN SHALL BE PROPERLY PROTECTED DURING CONSTRUCTION. PROTECTION TECHNIQUES SHALL BE REVIEWED AND APPROVED BY THE LANDSCAPE ARCHITECT.
12. CONTRACTOR SHALL PROVIDE FULL DEPTHS OF LOAM AS NOTED ON DETAILS AND AS SPECIFIED, FOR ALL PLANTING.
13. CONTRACTOR SHALL COORDINATE LOCATION OF ALL UTILITIES (LINES, DUCTS, CONDUITS, SLEEVES, FOOTINGS, ETC.) WITH LOCATIONS OF PROPOSED LANDSCAPE ELEMENTS (WALLS, FENCE, FOOTINGS, TREE ROOTBALLS, PROPOSED LIGHTING FOOTINGS, ETC.). CONTRACTOR SHALL REPORT ANY DISCREPANCIES TO LANDSCAPE ARCHITECT PRIOR TO CONTINUING WORK.
14. LIMIT OF WORK LINE IS NOTED ON DRAWINGS. CONTRACTOR IS RESPONSIBLE FOR ALL DAMAGE DUE TO OPERATIONS INSIDE AND OUTSIDE OF THE CONTRACT LIMIT LINE. ANY AREAS OUTSIDE THE LIMIT OF WORK THAT ARE DISTURBED SHALL BE RESTORED TO ITS ORIGINAL CONDITION AT NO ADDITIONAL COST TO THE OWNER.
15. IN AREAS WHERE EXISTING PAVEMENTS ARE REMOVED AND ARE PROPOSED AS LAWN, THE CONTRACTOR SHALL REMOVE THE PAVEMENT AND BASE, PROVIDE FILL AND 6" TOPSOIL PRIOR TO SEEDING.

ARCHITECT



Bargmann Hendrie + Archetype, Inc.  
9 Channel Center Street, Suite 300  
Boston, MA 02210  
(617) 350 0450

PROJECT NAME

**Pembroke  
Community Center**  
128 Center Street  
Pembroke, MA, 02359

CLIENT

**Town of  
Pembroke, MA**  
100 Center Street  
Pembroke, MA, 02359

PROJECT TEAM

Civil Engineer

Merrill Engineers & Land Surveyors  
427 Columbia Road  
Hanover, MA, 02339  
(781) 826-9200

Landscape Architect

Kyle Zick Landscape Architecture, Inc.  
36 Bromfield Street, Suite 202  
Boston, MA, 02108  
(617) 451-1018

Structural Engineer

Foley Buhl Roberts & Associates, Inc.  
2150 Washington Street  
Newton, MA, 02462  
(617) 527-9600

MEP/FP Engineer

Allied Consulting Engineering Services  
235 Littleton Road, Suite 5  
Westford, MA, 01886  
(978) 443-7888

Geotechnical Engineer

McArdle Cannon Associates, Inc.  
300 Oak Street, Suite 460  
Pembroke, MA 02359  
(781) 826-0040

Food Service Consultant

Crabtree McGrath Associates  
161 West Main Street  
Georgetown, MA 01833  
(978) 352 8500

Elevator Consultant

B Squared Engineering  
169 Mill Brook Road  
Stamford, CT, 06902  
(203) 989-9029

REVISIONS


DRAWING TITLE

Landscape Notes

DRAWING INFORMATION



May 6, 2022  
DATE OF ISSUE

Site Plan Review  
DESCRIPTION

1"=20'-0"  
SCALE

RB/KZ  
DRAWN BY

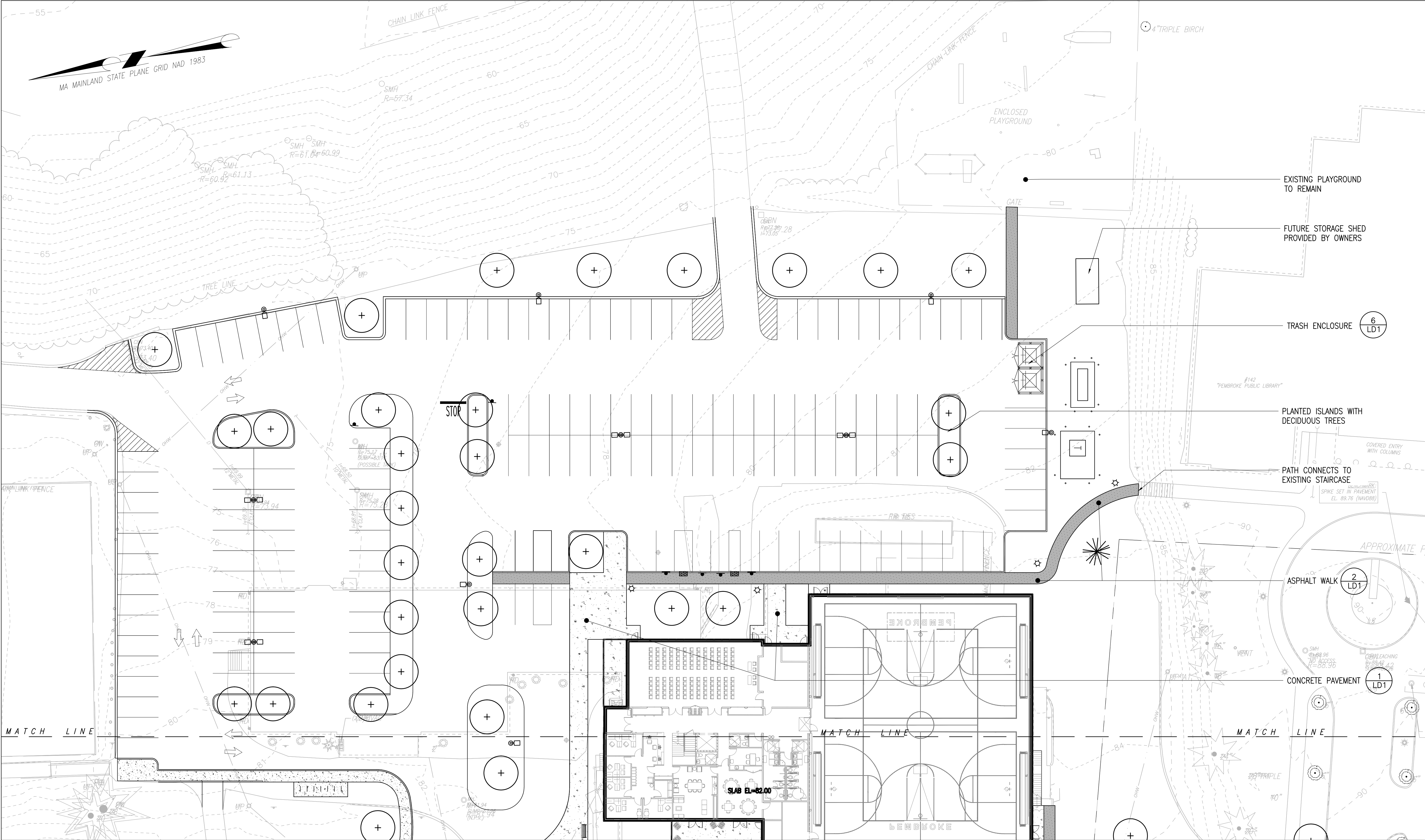
3403\_00  
PROJECT #

Pembroke  
FILE NAME

DRAWING NUMBER

L100





**LEGEND**

	CONCRETE PAVEMENT	
	ASPHALT - PEDESTRIAN	
	BENCH, TYP.	
	LIGHT POLE, TYP.	

ARCHITECT  
**bh+a**  
Bargmann Hendrie + Archetype, Inc.  
9 Channel Center Street, Suite 300  
Boston, MA 02210  
(617) 350 0450

PROJECT NAME  
**Pembroke  
Community Center**  
128 Center Street  
Pembroke, MA, 02359

CLIENT  
**Town of  
Pembroke, MA**  
100 Center Street  
Pembroke, MA, 02359

PROJECT TEAM  
**Civil Engineer**  
Merrill Engineers & Land Surveyors  
427 Columbia Road  
Hanover, MA, 02339  
(781) 826-9200

**Landscape Architect**  
Kyle Zick Landscape Architecture, Inc.  
36 Bromfield Street, Suite 202  
Boston, MA, 02108  
(617) 451-1018

**Structural Engineer**  
Foley Buhl Roberts & Associates, Inc.  
2150 Washington Street  
Newton, MA, 02462  
(617) 527-9600

**MEP/FP Engineer**  
Allied Consulting Engineering Services  
235 Littleton Road, Suite 5  
Westford, MA, 01886  
(978) 443-7888

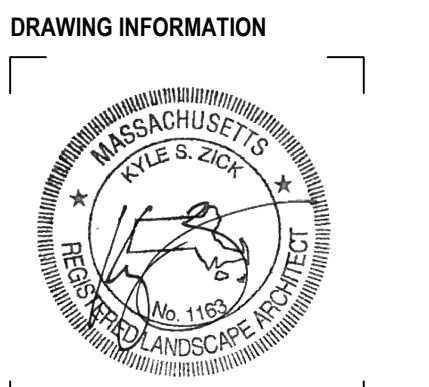
**Geotechnical Engineer**  
McArdle Cannon Associates, Inc.  
300 Oak Street, Suite 460  
Pembroke, MA 02359  
(781) 826-0040

**Food Service Consultant**  
Crabtree McGrath Associates  
161 West Main Street  
Georgetown, MA 01833  
(978) 352 8500

**Elevator Consultant**  
B Squared Engineering  
169 Mill Brook Road  
Stamford, CT, 06902  
(203) 989-9029

REVISIONS	

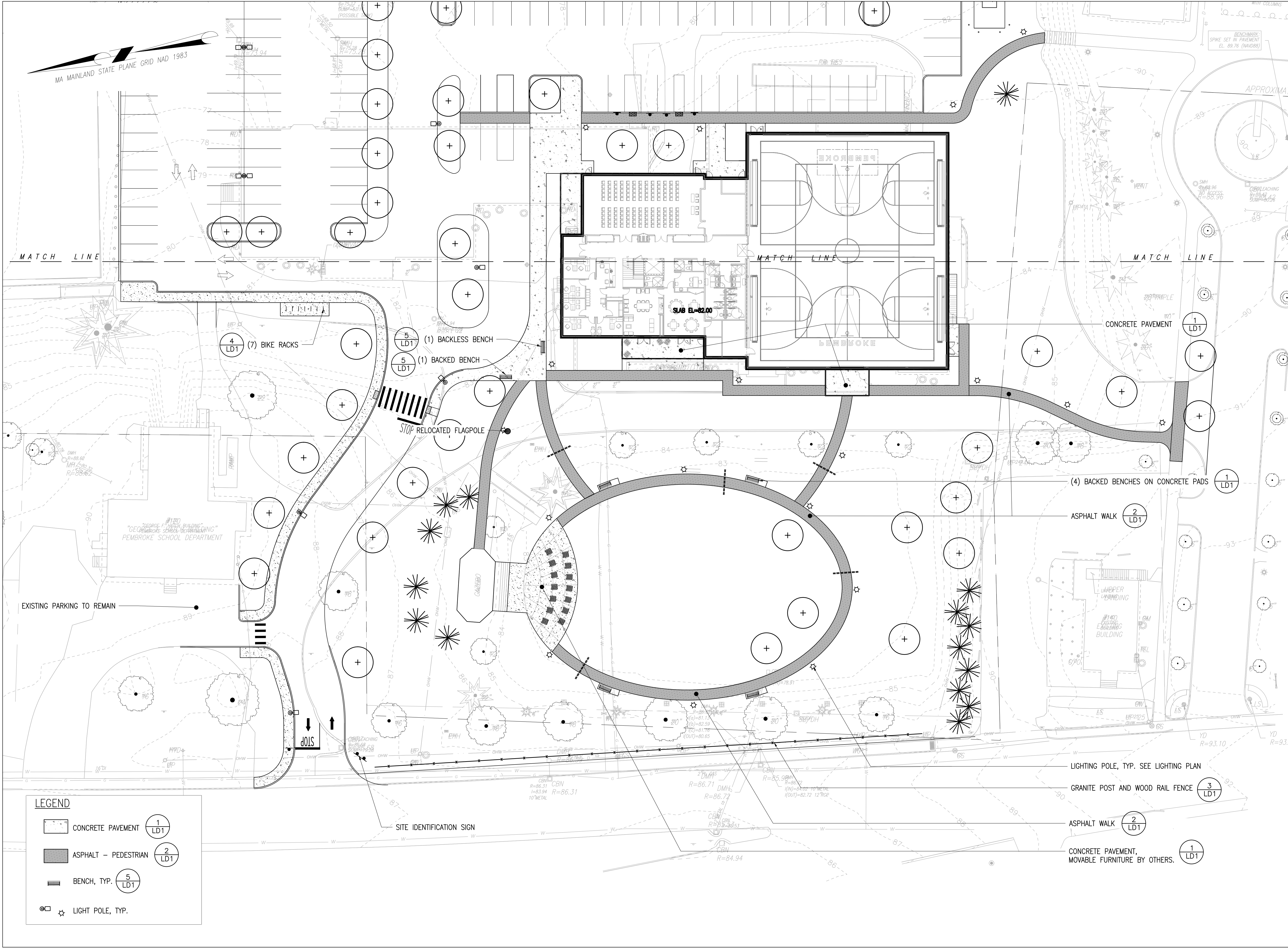
DRAWING TITLE  
**Landscape Materials  
Plan**



May 6, 2022  
DATE OF ISSUE  
Site Plan Review  
DESCRIPTION  
1"=20'-0"  
SCALE  
3403.00  
PROJECT #  
RBLKZ  
DRAWN BY  
Pembroke  
FILE NAME

DRAWING NUMBER  
**L101**





**LEGEND**

	CONCRETE PAVEMENT	1 LD1
	ASPHALT - PEDESTRIAN	2 LD1
	BENCH, TYP.	5 LD1
	LIGHT POLE, TYP.	6 LD1

**ARCHITECT**  
**bh+a**  
Bargmann Hendrie + Archetype, Inc.  
9 Channel Center Street, Suite 300  
Boston, MA 02210  
(617) 350 0450

**PROJECT NAME**  
**Pembroke Community Center**  
128 Center Street  
Pembroke, MA, 02359

**CLIENT**  
**Town of Pembroke, MA**  
100 Center Street  
Pembroke, MA, 02359

**PROJECT TEAM**

**Civil Engineer**  
Merrill Engineers & Land Surveyors  
427 Columbia Road  
Hanover, MA, 02339  
(781) 826-9200

**Landscape Architect**  
Kyle Zick Landscape Architecture, Inc.  
36 Bromfield Street, Suite 202  
Boston, MA, 02108  
(617) 451-1018

**Structural Engineer**  
Foley Buhl Roberts & Associates, Inc.  
2150 Washington Street  
Newton, MA, 02462  
(617) 527-9600

**MEP/FP Engineer**  
Allied Consulting Engineering Services  
235 Littleton Road, Suite 5  
Westford, MA, 01886  
(978) 443-7888

**Geotechnical Engineer**  
McArdle Cannon Associates, Inc.  
300 Oak Street, Suite 460  
Pembroke, MA 02359  
(781) 826-0040

**Food Service Consultant**  
Crabtree McGrath Associates  
161 West Main Street  
Georgetown, MA 01833  
(978) 352 8500

**Elevator Consultant**  
B Squared Engineering  
169 Mill Brook Road  
Stamford, CT, 06902  
(203) 989-9029

**REVISIONS**

NO.	DESCRIPTION	DATE

**DRAWING TITLE**  
**Landscape Materials Plan**

**DRAWING INFORMATION**

May 6, 2022  
DATE OF ISSUE

Site Plan Review  
DESCRIPTION

1"=20'-0"  
SCALE

3403.00  
PROJECT #

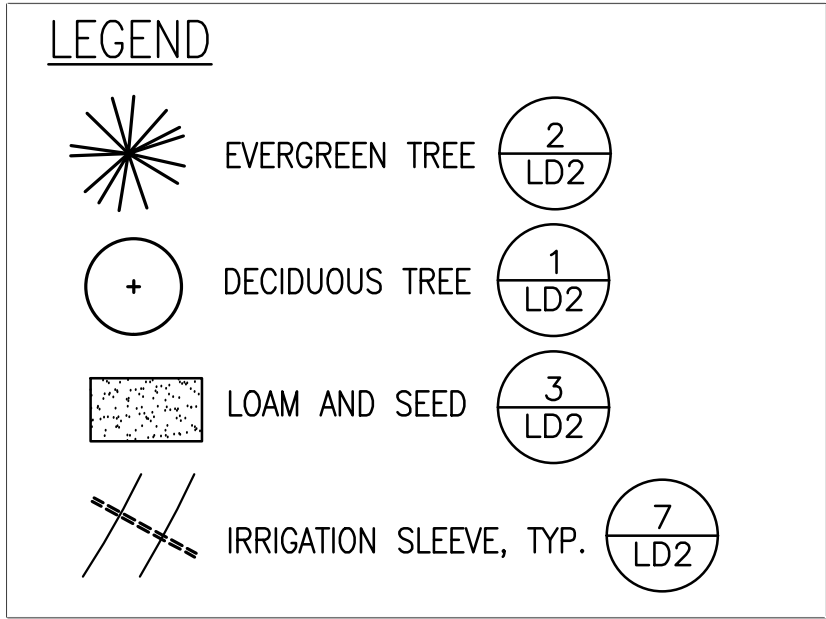
RBKZ  
DRAWN BY

Pembroke  
FILE NAME

**DRAWING NUMBER**  
**L102**

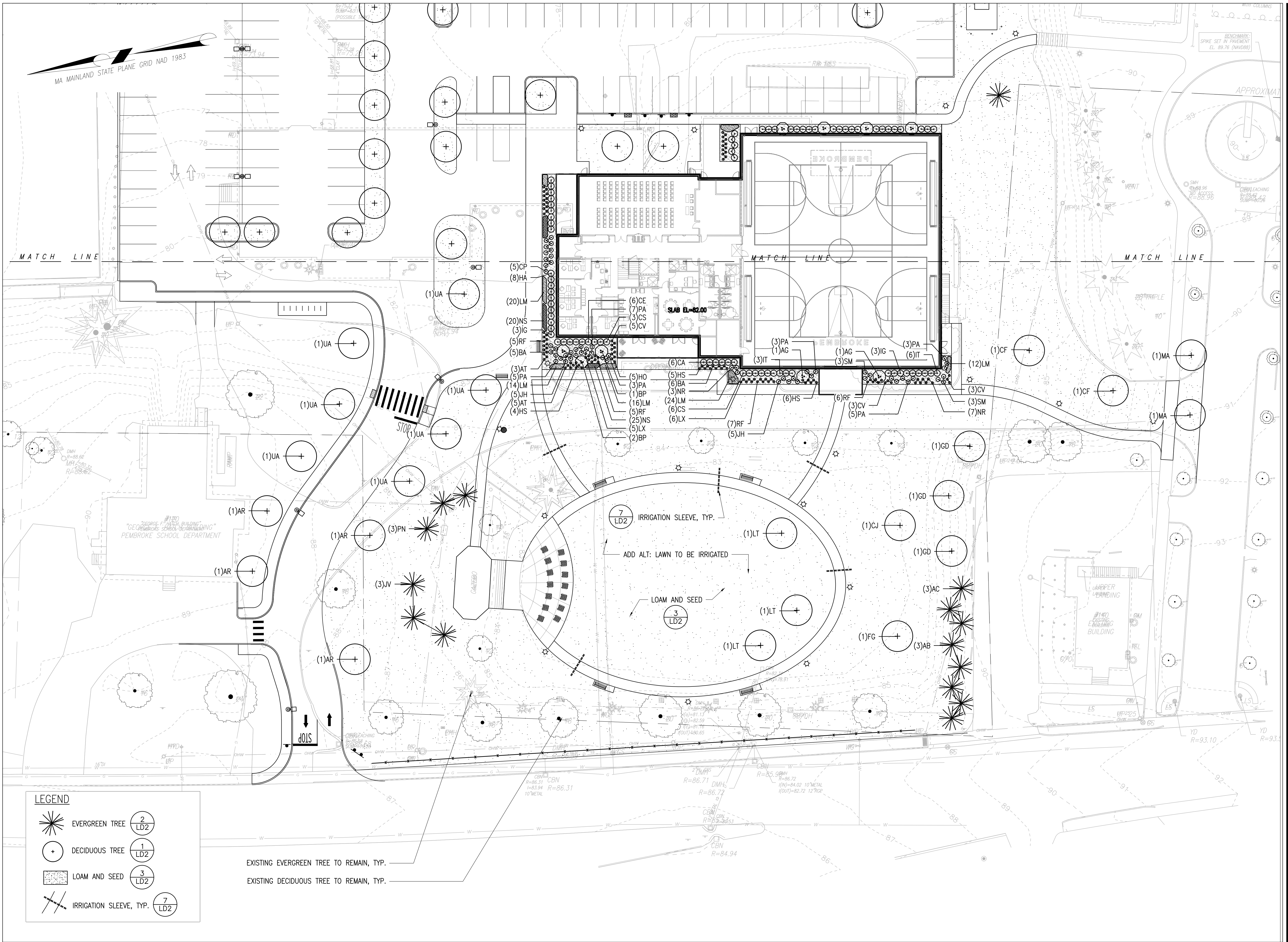
Copyright BH+A, Inc. V.2.1



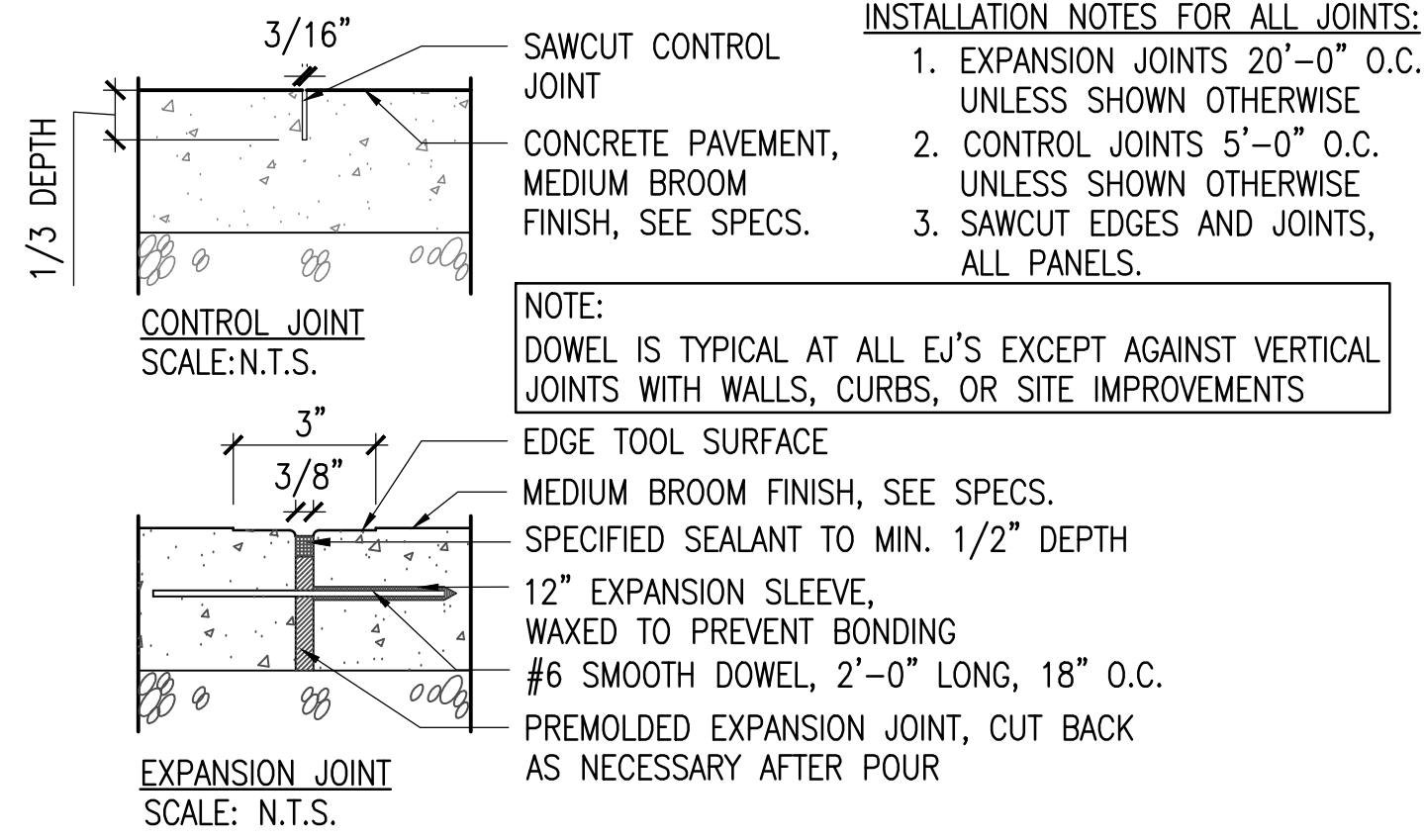
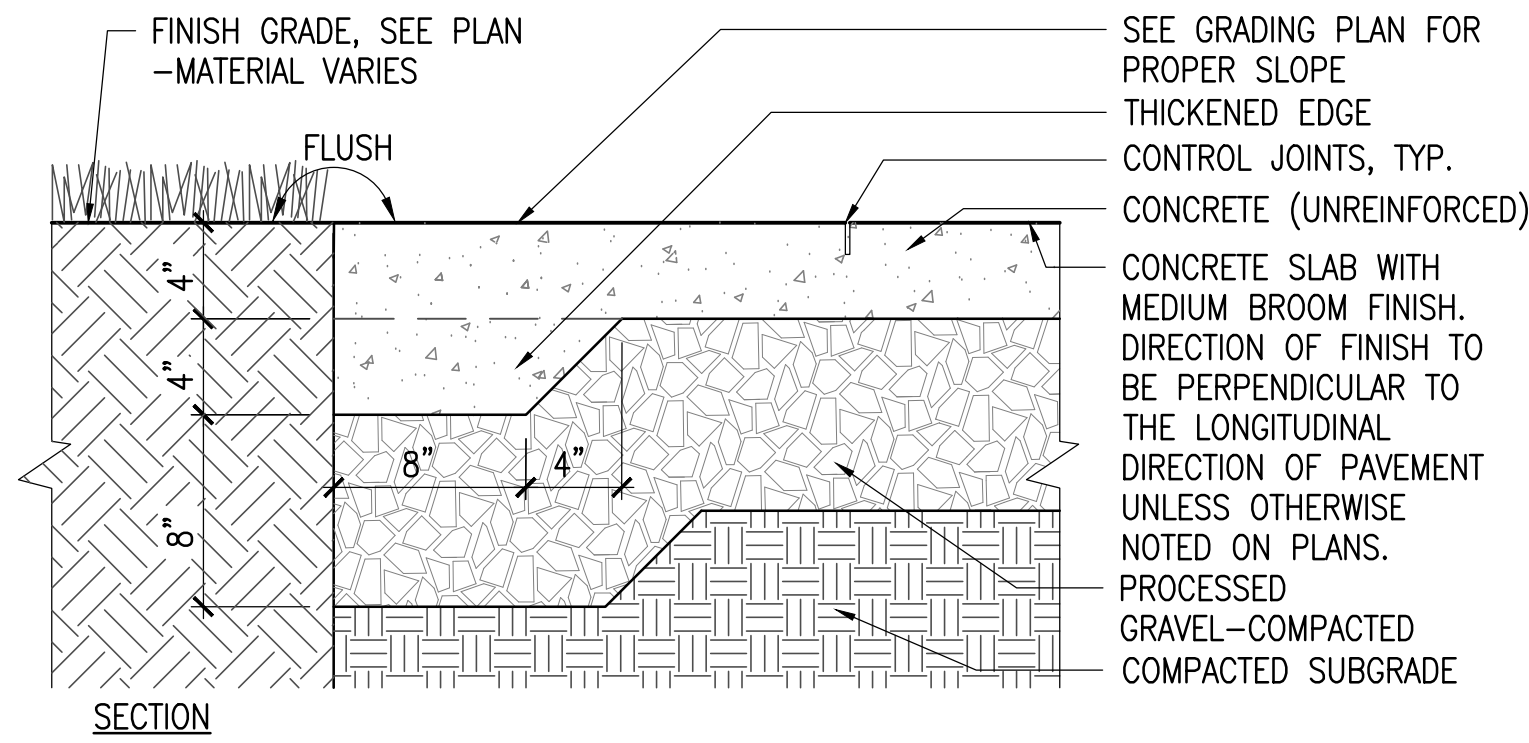


KEY	QTY	BOTANICAL NAME	COMMON NAME	SIZE	SPACING	NOTES
<b>TREES</b>						
AC	3	ABIES CONCOLOR	WHITE FIR	8-10' HT	-	FALL DIG HAZARD
AB	3	ABIES BALSAMEA 'CANAAN'	BALSM FIR	8-10' HT	-	
AR	8	ACER RUBRUM 'OCTOBER GLORY'	RED MAPLE	3" CAL	-	FALL DIG HAZARD
AG	2	AMELANCHIER X GRANDIFLORA 'AUTUMN BRILLANCE'	APPLE SERVICEBERRY	8-10' CLUMP	-	
BP	7	BETULA PAPPYRIFERA 'OENCI'	RENAISSANCE OASIS BIRCH	10-12' HT	-	FALL DIG HAZARD
CI	2	CORNUS FLORIDA 'CLOUD NINE'	FLOWERING DOGWOOD	2.5-3" CAL	-	FALL DIG HAZARD
CJ	1	CERCIDIPHYLLUM JAPONICUM	KATSURA TREE	2.5-3" CAL	-	
FG	1	FAGUS GRANDIFOLIA	AMERICAN BEECH	2.5-3" CAL	-	FALL DIG HAZARD
GD	3	GYMNOCLADUS DIOICA	KENTUCKY COFFEE TREE	2.5-3" CAL	-	
GT	10	GLEDITSIA TRICANTHOS 'NERMIS'	THORNLESS HONEYLOCUST	2.5-3" CAL	-	
JV	3	JUNIPERUS VIRGINIANA	EASTERN RED CEDAR	10-12' HT	-	FALL DIG HAZARD
LT	3	LIRIODENDRON TULIPIFERA	TULIP TREE	2.5-3" CAL	-	FALL DIG HAZARD
LS	3	LIQUIDAMBAR STRYCIIFLUA	SWETOUGH	2.5-3" CAL	-	FALL DIG HAZARD
MA	2	MALLUS X 'PRAIRIEFIRE'	PLAIRIE FIRE CRABAPPLE	2-2.5' B&B	-	FALL DIG HAZARD
NS	3	NYSSA SYLVATICA 'WILDFIRE'	BLACK GUM 'WILDFIRE'	2.5-3" CAL	-	FALL DIG HAZARD
OA	2	OSTRYA VIRGINIANA	HOP HORNBREAM	2.5-3" CAL	-	FALL DIG HAZARD
OA	2	OXYDENDRUM ARBOREUM	SOURWOOD	2.5-3" CAL	-	
PN	3	PINUS NIGRA	AUSTRIAN PINE	8-10' HT	-	FALL DIG HAZARD
QB	4	QUERCUS BICOLOR	SWAMP WHITE OAK	2.5-3" CAL	-	FALL DIG HAZARD
TD	1	TAXODIUM DISTICHUM	BALD CYPRESS	8-10' HT	-	FALL DIG HAZARD
UA	8	ULMUS AMERICANA 'JEFFERSON'	JEFFERSON AMERICAN ELM	2.5-3" CAL	-	
<b>SHRUBS</b>						
CE	6	CEANOTHUS AMERICANUS	NEW JERSEY TEA	24-36" HT	36" O.C.	
CF	6	CISTRA ALNIFOLIA 'HUMMINGBIRD'	SWEET PEPPERBUSH	24-36" HT	36" O.C.	
CP	5	COMPTONIA PEREGRINA	SWEET FERN	24"	24" O.C.	
CS	9	CORNUS SERICEA 'CARDINAL'	RED-TWIG DOGWOOD 'CARDINAL'	24-36" HT	36" O.C.	
HA	26	HYDRANGEA ARBORESCENS 'ANNABELE'	ANNABELE SMOOTH HYDRANGEA	24-36" HT	48" O.C.	
IG	18	ILEX GLABRA 'SHAMROCK'	INKBERRY 'SHAMROCK'	24-36" HT	48" O.C.	
IT	9	ITEA VIRGINICA 'HENRY'S GARNET'	VIRGINIA SWEETSPIR 'HENRY'S GARNET'	24-36" HT	36" O.C.	
JH	10	JUNIPERUS HORIZONTALIS 'BAR HARBOR'	CREeping JUNIPER 'BAR HARBOR'	36" SPREAD	36" O.C.	
KL	5	KALMIA LATIFOLIA	MOUNTAIN LAUREL	24-36" HT	36" O.C.	
PJ	6	PIERIS JAPONICA 'CAVATINE'	CAVATINE PIERS	24" HT	30" O.C.	
SM	6	SYRINGA MEYER 'PALUBIN'	PALUBIN DWARF LILAC	24" HT	24" O.C.	
<b>PERENNIALS</b>						
AM	6	ALCHEMILLA MOLLIS 'AUSLESE'	AUSLESE 'LADY'S MANTLE	1 GAL	18" O.C.	
AT	8	ASCLEPIAS TUBEROSA	BUTTERFLY WEED	1 GAL	18" O.C.	
AA	5	ASTILE X ARENDSI 'BRIDAL VEIL'	BRIDAL VEIL ASTILE	1 GAL	24" O.C.	
BA	11	BAPTISIA AUSTRALIS	FALSE INDIGO	1 GAL	24" O.C.	
CV	11	COREOPSIS VERTICILLATA X MOONBEAM	MOONBEAM TICKSEED	1 GAL	18" O.C.	
DP	5	DEINNSTAEDIA PUNCTILOBULA	HYACINTHEA FERN	1 GAL	18" O.C.	
GR	10	GERANIUM 'ROZANNE'	ROZANNE GERANIES	1 GAL	18" O.C.	
HS	15	HEMEROCALLIS X STELLA D'ORO	DAYLILY 'STELLA D'ORO'	1 GAL	12" O.C.	
HO	5	HOSTA 'BLUE ANGEL'	BLUE ANGEL HOSTA	1 GAL	36" O.C.	
LX	11	LEUCANTHEMUM X SUPERBUM	SHASTA DAISY	2 GAL	24" O.C.	
LM	118	LIRIOPE MUSCARI 'BIG BLUE'	BIG BLUE LILTYURP	1 GAL	12" O.C.	
NR	10	NEPETA RACEMOSA 'WALKER'S LOW'	WALKER'S LOW CATMINT	2 GAL	24" O.C.	
PA	26	PENNISTETUM ALOPECUROIDES 'HAMELIN'	HAMELIN FOUNTAIN GRASS	2 GAL	30" O.C.	
RF	23	RUBRICKIA FULGIDA	ORANGE CLOFLOWER	2 GAL	24" O.C.	



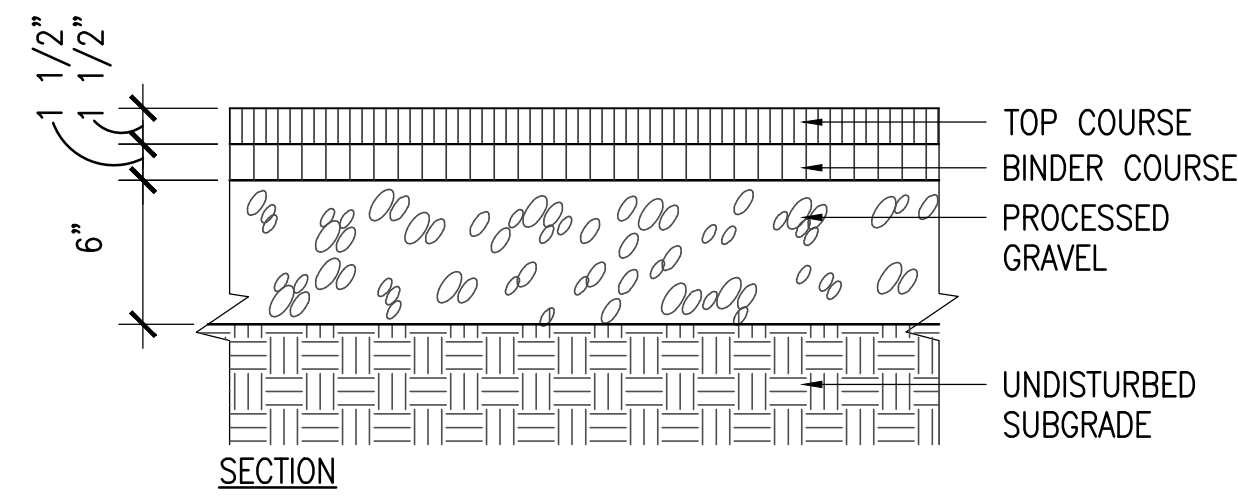






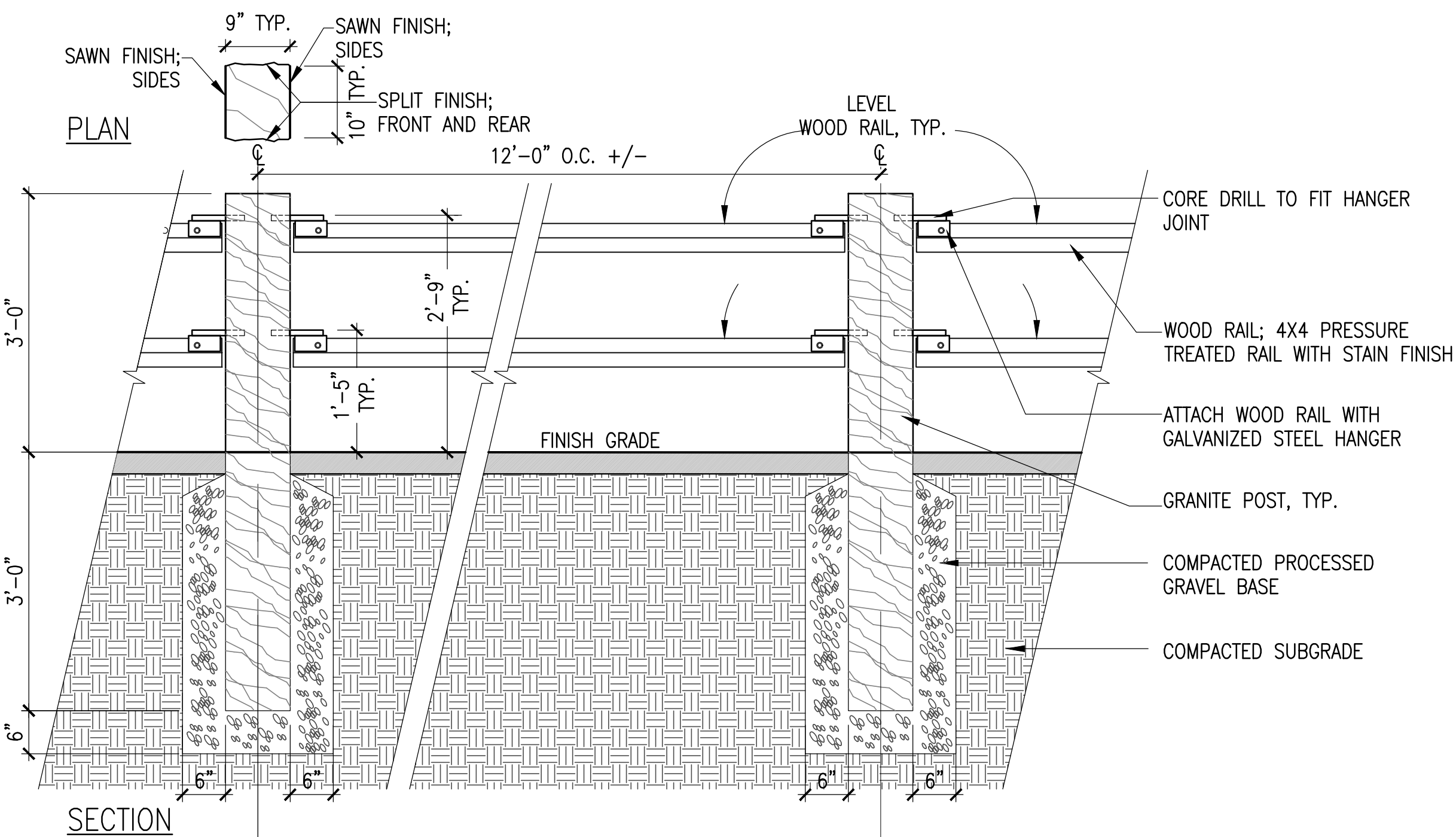
## 1 CONCRETE PAVEMENT

SCALE: 1 1/2" = 1'-0"



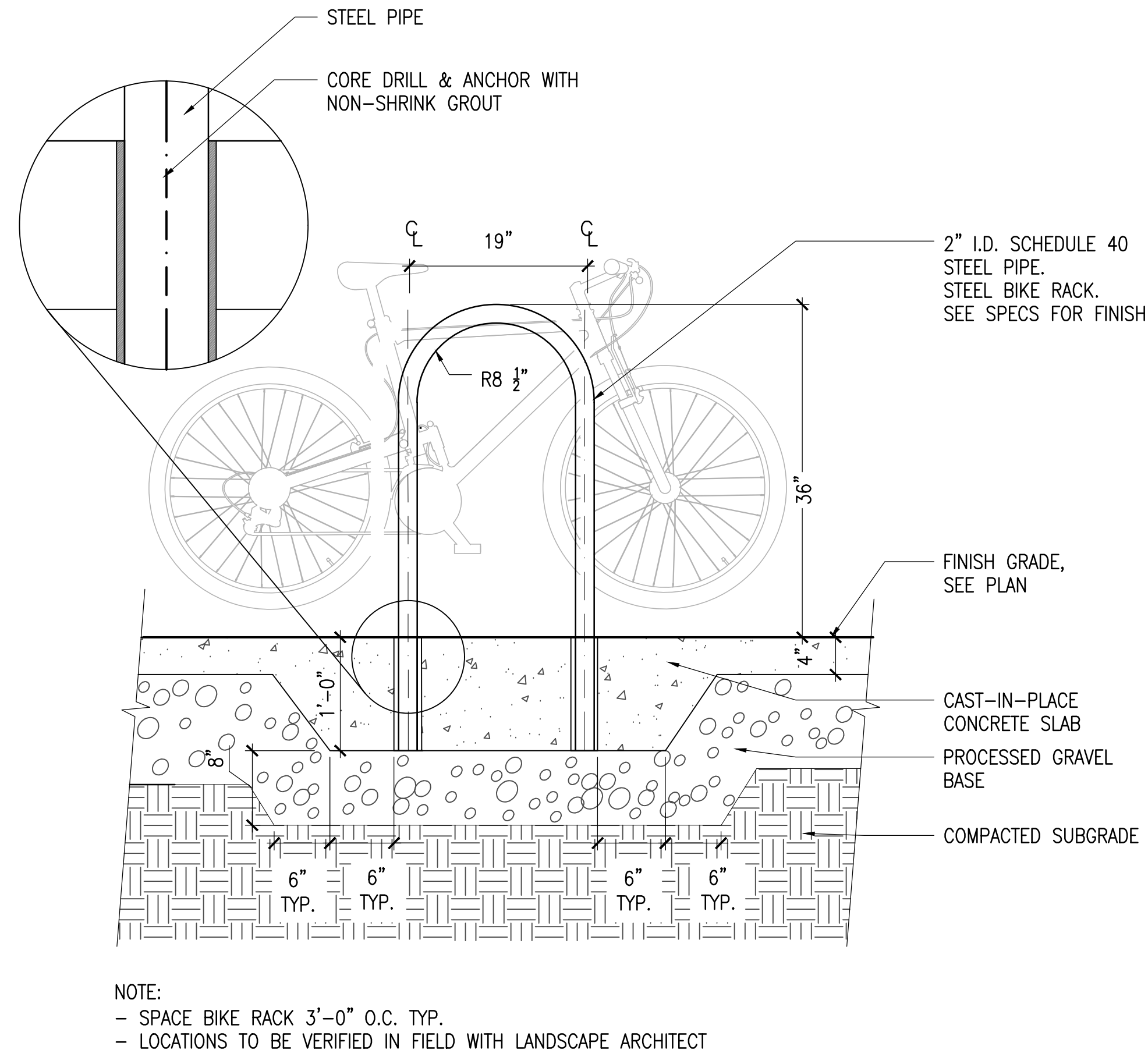
## 2 PEDESTRIAN ASPHALT

SCALE: 1 1/2" = 1'-0"



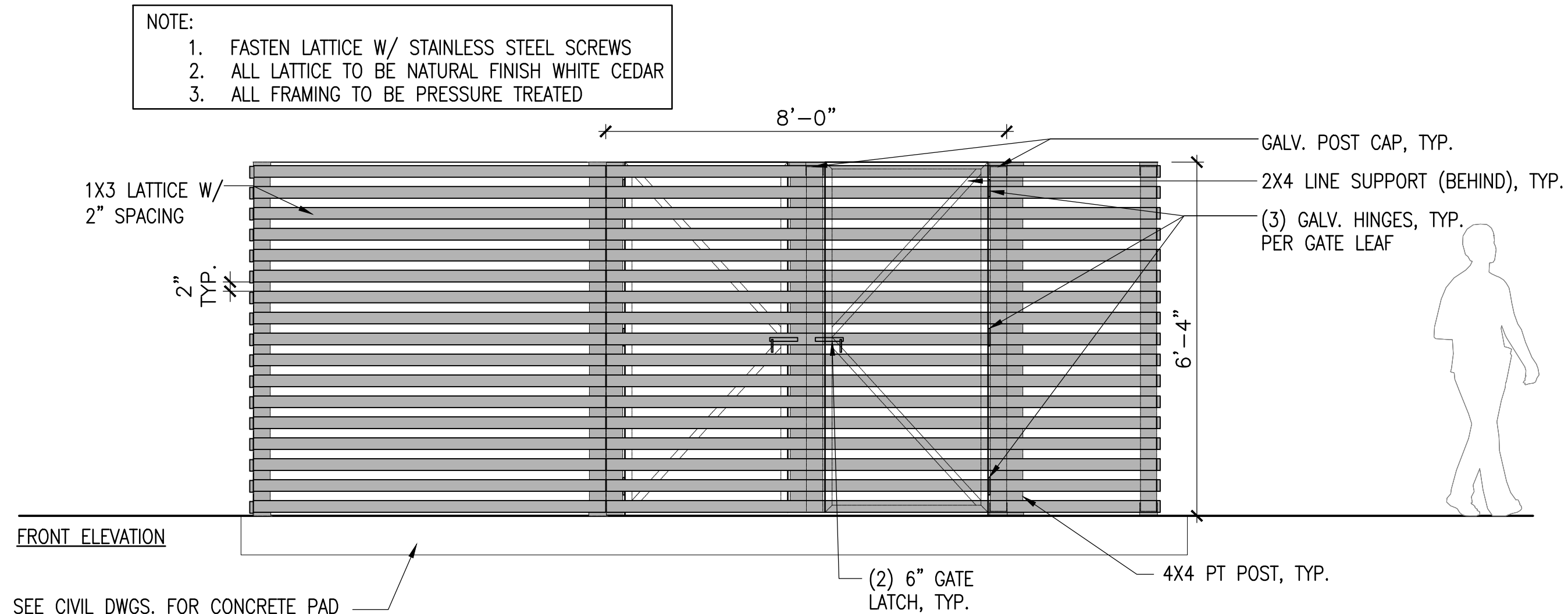
## 3 GRANITE POST AND WOOD RAIL

SCALE: 3/4" = 1'-0"



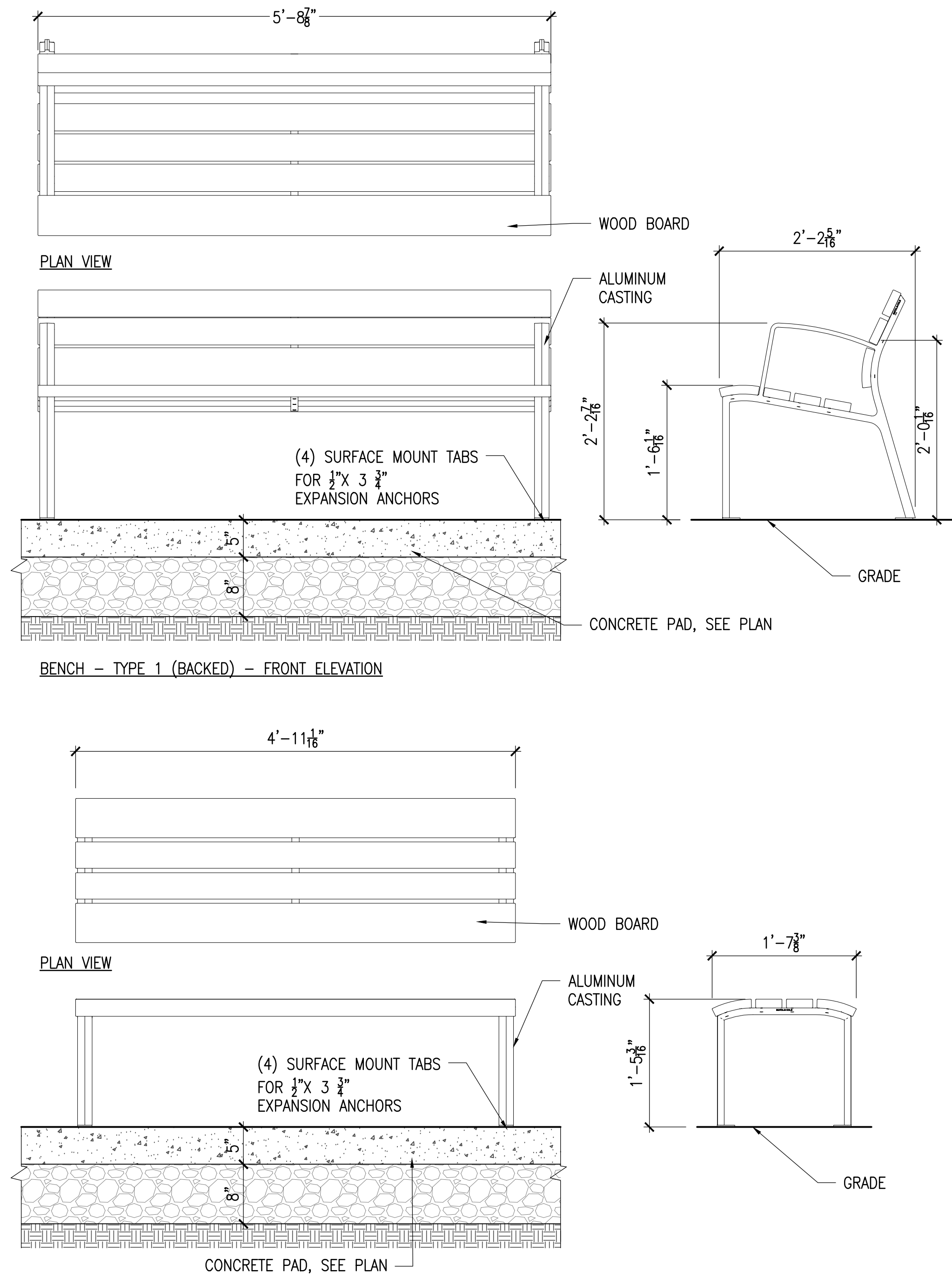
## 4 BIKE RACK

SCALE: 1" = 1'-0"



## 6 TRASH ENCLOSURE

SCALE: 1/2" = 1'-0"



## 5 BENCH

SCALE: 1" = 1'-0"



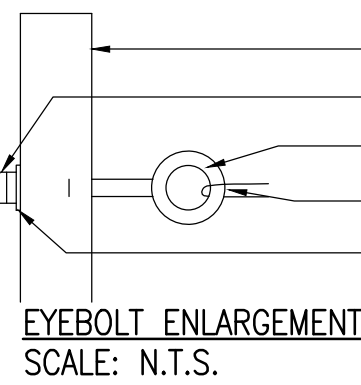
NOTES

1. IF CONTAINER GROWN, SCARIFY SOIL AND ROOTS TO REMOVE CIRCLING ROOTS.
2. ADD HIGH VISIBILITY FLAGGING TO EACH GUY WIRE FOR PUBLIC SAFETY.

2" X 4" X 10' FIR POSTS; 3 PER TREE EQUALLY SPACED AROUND TREE; ALL POSTS SHALL BE PLUMB AND HAVE SAME HEIGHT ABOVE FINISH GRADE; ORIENT 3": DIMENSION PERP. TO TRUNK

BORE 3/8" HOLE THROUGH 2" DIMENSION OF EACH POST, 6" FROM TOP OF POST, TO ACCEPT 1/4" X 4" GALVANIZED STEEL EYEBOLT; PROVIDE GALVANIZED STEEL WASHER AND 2 BOLTS FOR EACH EYEBOLT

13 GAUGE GALVANIZED MALLEABLE WIRE CABLE LOOPED AROUND TRUNK AND THROUGH EYEBOLT; ENCASE WIRE AROUND TRUNK IN REINFORCED RUBBER HOSE; SECURE BY TWISTING TAUTLY.



- FIR POST
- GALVANIZED STEEL NUTS (2)
- GALVANIZED STEEL EYEBOLT
- GALVANIZED STEEL GUY WIRE
- GALVANIZED STEEL WASHER

INSTALL 3 GUYS PER TREE EQUALLY SPACED AROUND ROOTBALL. ATTACH 13 GAUGE GALV. MALLEABLE STEEL GUY WIRE 2/3 HEIGHT OF TREE IN REINFORCED RUBBER HOSE; WITH CABLE CLAMPS. SECURE BY TWISTING TAUTLY.

INSTALL TREE PLUMB

WATERING BAG

TOP OF ROOTBALL SHALL BEAR' SAME RELATIONSHIP TO FINISHED GRADE AS TO PREVIOUS EXISTING GRADE

ROOT FLARE SHALL BE EXPOSED; MULCH SHOULD NOT TOUCH TREE TRUNK

PLACE BALL ON SUBSOIL. REMOVE AND DISCARD BURLAP EXCEPT UNDER BALL. REMOVE AND DISCARD ALL SYNTHETIC SOIL WRAPPING MATERIALS (TREATED BURLAP, NYLON TWINE, WIRE BASKETS, ETC.)

3" BARK MULCH

DECOMPACTED SUBGRADE

EXCAVATE HOLE TO DIAMETER 3X WIDER THAN ROOTBALL. BACKFILL HOLE WITH PLANTING SOIL MIX

SLOW RELEASE FERTILIZER  
EXCAVATE SUBSOIL AS REQUIRED TO PLACE ROOTBALL TO PROPER ELEVATION. PLACE ROOTBALL DIRECTLY ON COMPACTED OR UNDISTURBED SUBSOIL.

SECTION ELEVATION

1 DECIDUOUS TREE

SCALE: 3/4"=1'-0"

INSTALL 3 GUYS PER TREE EQUALLY SPACED AROUND ROOTBALL. ATTACH 13 GAUGE GALV. MALLEABLE STEEL GUY WIRE 2/3 HEIGHT OF TREE IN REINFORCED RUBBER HOSE; WITH CABLE CLAMPS. SECURE BY TWISTING TAUTLY.

TREE SHALL BE PLANTED WITH TOP OF ROOTBALL BEARING THE SAME RELATIONSHIP TO FINISHED GRADE AS TO PREVIOUS EXISTING GRADE. TREE SHALL BE PLUMB AFTER SETTLEMENT.

3" BARK MULCH (HOLD MULCH OFF ROOT FLARE)

ROLL BURLAP BACK FROM TOP 1/3 OF ROOTBALL BEFORE BACKFILLING. UNTIE ROPE FROM TRUNK.

SLOW RELEASE FERTILIZER

FREE DRAINING, UNDISTURBED OR COMPACTED SUBGRADE

(3) 2"x3"x4' FIR POST; ATTACH GALVANIZED MALLEABLE STEEL CABLE TO POST AND SECURE BY TWISTING TAUTLY; SET ANGLE OF POST & GUY TO ENTER GROUND AT THE LIMIT OF THE SPREAD OF THE BOTTOM BRANCHES; STAKES SHALL BE OUTSIDE OF TREE PIT.

NOTES

1. ADD HIGH VISIBILITY FLAGGING TO EACH GUY WIRE FOR PUBLIC SAFETY.

25° STAKE ANGLE

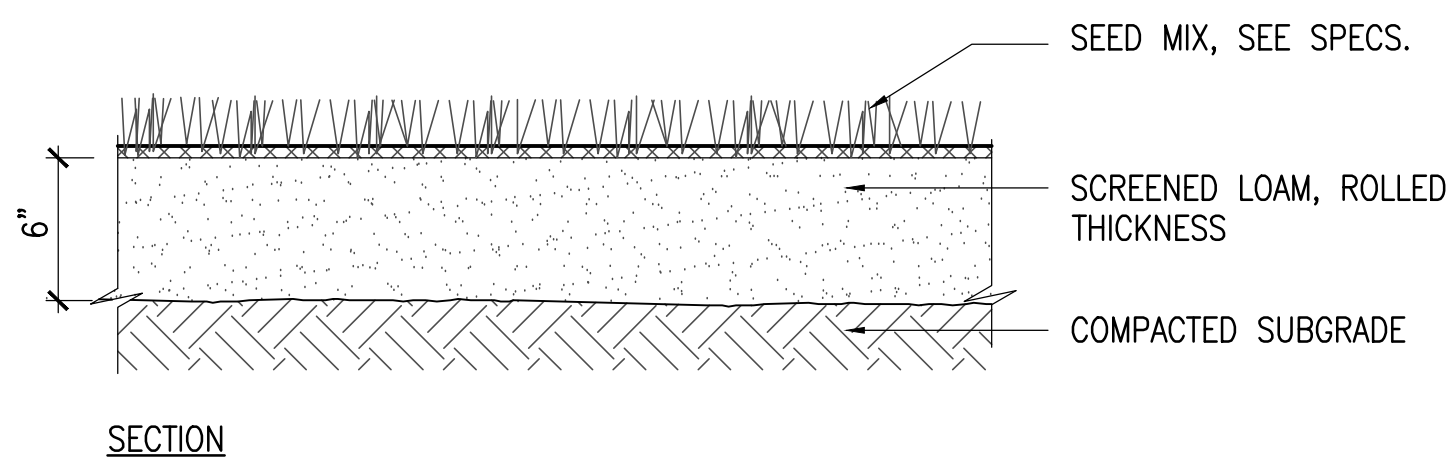
WATERING BAG

PLANTING SOIL MIX

SECTION ELEVATION

2 EVERGREEN TREE

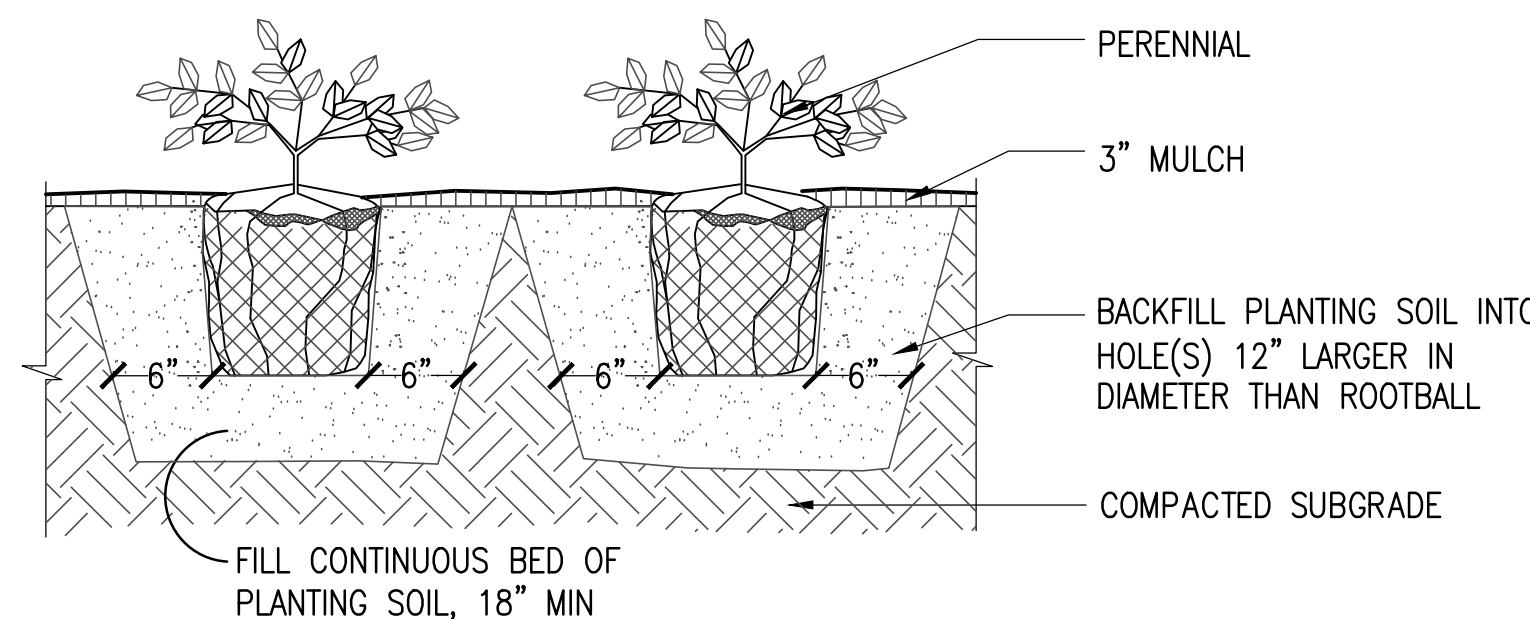
SCALE: 3/4"=1'-0"



SECTION

3 LOAM AND SEED

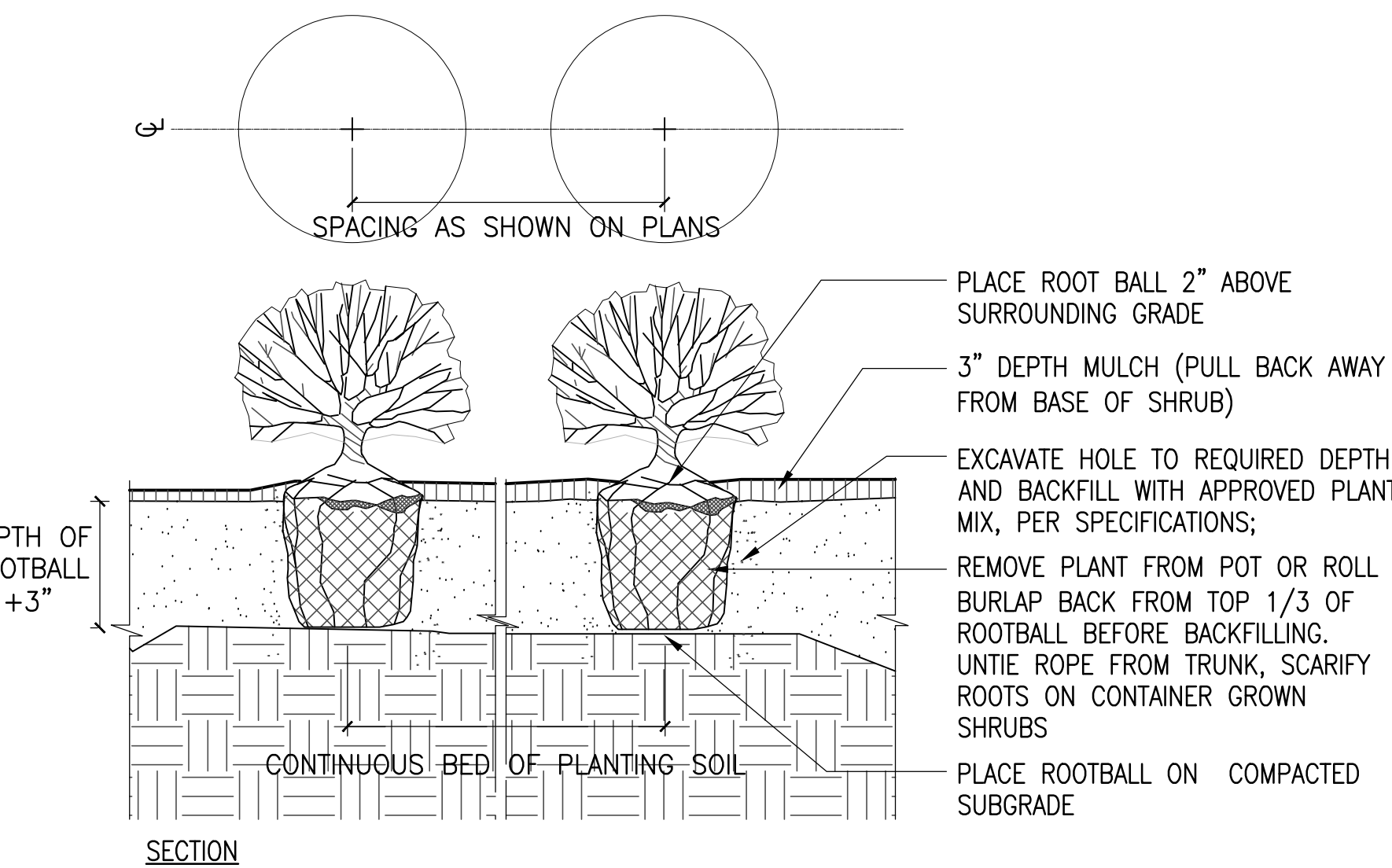
SCALE: 1-1/2"=1'-0"



SECTION

4 PERENNIAL PLANTING

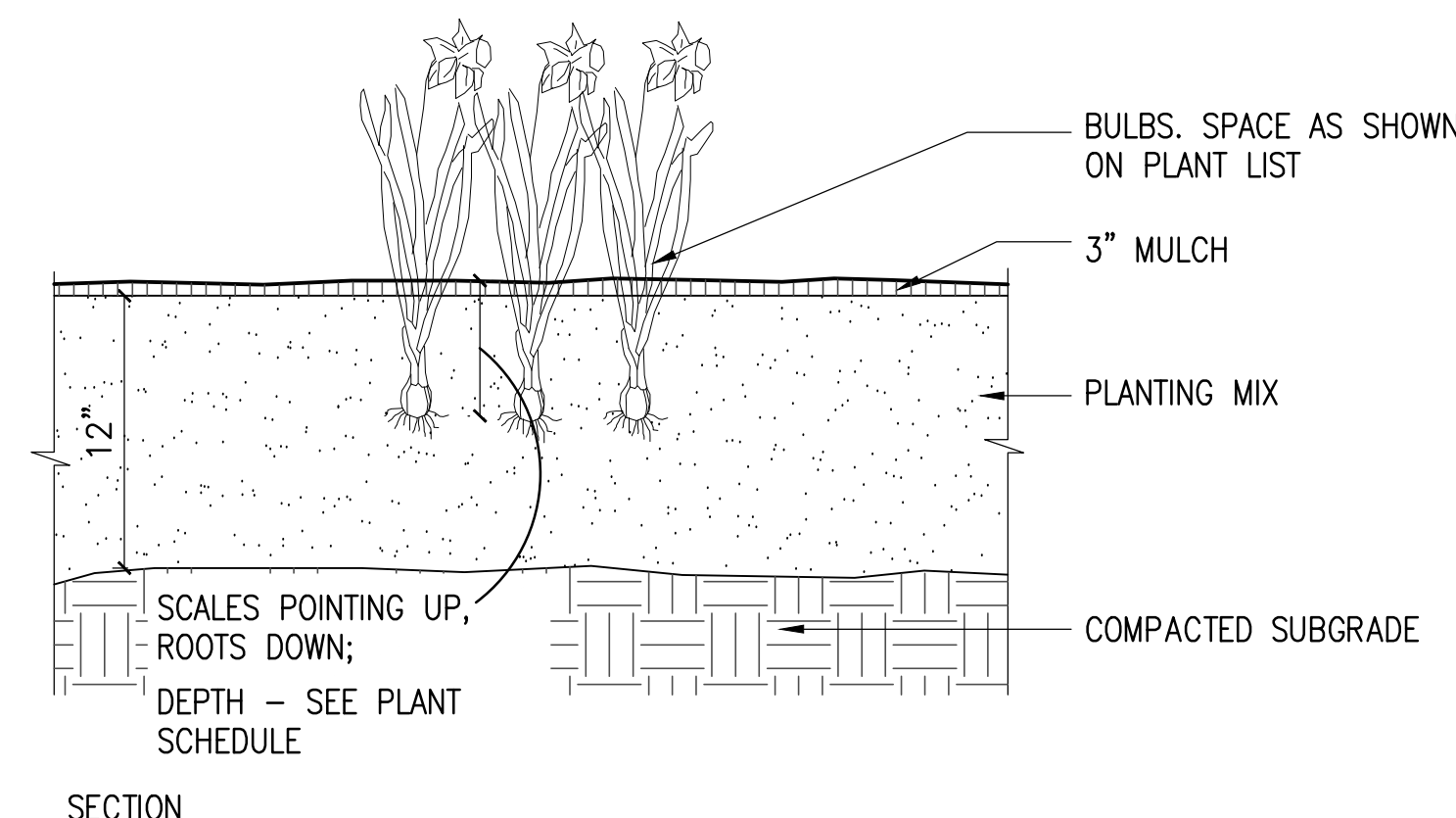
SCALE: 1-1/2"=1'-0"



SECTION

5 SHRUB PLANTING

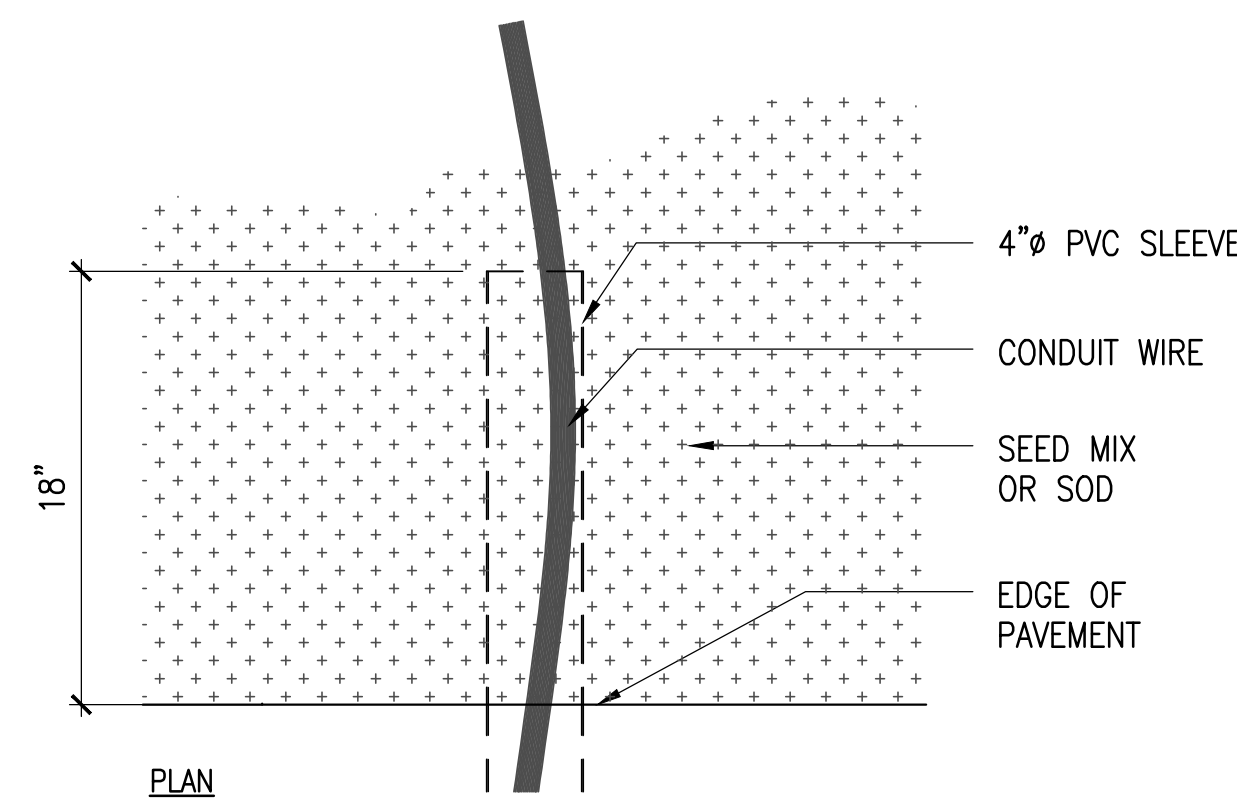
SCALE: 1-1/2"=1'-0"



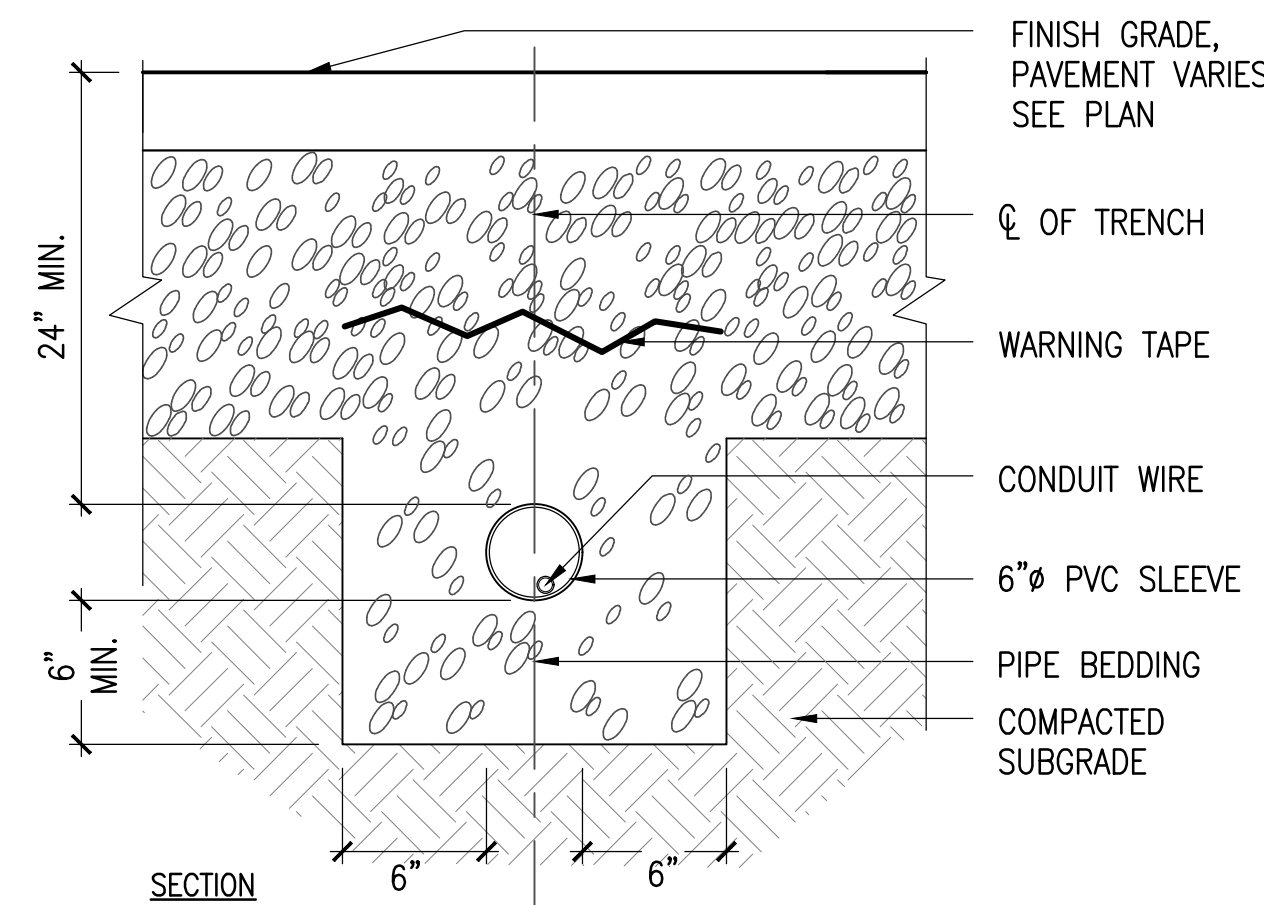
SECTION

6 BULB PLANTING

SCALE: 1-1/2"=1'-0"



PLAN



SECTION

7 IRRIGATION SLEEVE

SCALE: 1-1/2"=1'-0"

ARCHITECT

bh+a

Bargmann Hendrie + Archetype, Inc.  
9 Channel Center Street, Suite 300  
Boston, MA 02210  
(617) 350 0450

PROJECT NAME

**Pembroke  
Community Center**

128 Center Street  
Pembroke, MA, 02359

CLIENT

**Town of  
Pembroke, MA**

100 Center Street  
Pembroke, MA, 02359

PROJECT TEAM

Civil Engineer

Merrill Engineers & Land Surveyors  
427 Columbia Road  
Hanover, MA, 02339  
(781) 826-9200

Landscape Architect

Kyle Zick Landscape Architecture, Inc.  
36 Bromfield Street, Suite 202  
Boston, MA, 02108  
(617) 451-1018

Structural Engineer

Foley Buhl Roberts & Associates, Inc.  
2150 Washington Street  
Newton, MA, 02462  
(617) 527-9600

MEP/FP Engineer

Allied Consulting Engineering Services  
235 Littleton Road, Suite 5  
Westford, MA, 01886  
(978) 443-7888

Geotechnical Engineer

McArdle Cannon Associates, Inc.  
300 Oak Street, Suite 460  
Pembroke, MA 02359  
(781) 826-0040

Food Service Consultant

Crabtree McGrath Associates  
161 West Main Street  
Georgetown, MA 01833  
(978) 352 8500

Elevator Consultant

B Squared Engineering  
169 Mill Brook Road  
Stamford, CT, 06902  
(203) 989-9029

REVISIONS


DRAWING TITLE

**Landscape Details**

DRAWING INFORMATION



May 6, 2022

DATE OF ISSUE

Site Plan Review

DESCRIPTION

1"=20'-0"

SCALE

3403.00

PROJECT #

RBK/Z

DRAWN BY

Pembroke

FILE NAME

DRAWING NUMBER

**LD2**