

**PEMBROKE SELECT BOARD  
OFFICE OF THE TOWN MANAGER  
100 Center Street, Pembroke, MA 02359  
781-293-3844 Fax: 781-293-4650**

**NOTICE OF PUBLIC HEARING  
TO ALL ABUTTERS**

January 29, 2024

As an abutter to the property, you are hereby notified that a public hearing will be held in the Pembroke Town Hall, Veteran's Memorial Hall, Room 6, 100 Center Street, Pembroke, MA, on Wednesday, February 21, 2024 at 7:00pm., to hear and act upon the petition of Massachusetts Electric Company/National Grid to install underground utilities, together with such sustaining and protecting fixtures as said Company may deem necessary to be owned and used in common by your petitioners, in the following public way or ways:

**Sunset Way**

**Beginning at a point approximately 30 feet West of the centerline of the intersection of Reservoir Road and Sunset Way and continuing approximately 4,118 feet in a North direction. Install underground facilities on Sunset Way. Install ~4,118' of new conduit. Install seven new Pull Boxes.**

Your presence at this hearing is welcome. A copy of the petition and plan are available on the Town's website: [www.pembroke-ma.gov](http://www.pembroke-ma.gov)

**TOWN OF PEMBROKE  
SELECT BOARD**

Questions contact – Riordan Hoffman #781-423-3062

Petition of the Massachusetts Electric Company d/b/a NATIONAL GRID  
Of BROCKTON, MASSACHUSETTS  
For Electric Conduit Location:

To the Board of Selectmen of Pembroke

Respectfully represents the Massachusetts Electric Company d/b/a NATIONAL GRID of Brockton Massachusetts, that it desires to construct a line of underground electric conduits, including the necessary sustaining and protecting fixtures, under and across the public way or ways hereinafter named.

Wherefore it prays that after due notice and hearing as provided by law, it be granted permission to excavate the public highways and to run and maintain underground electric conduits, together with such sustaining and protecting fixtures as it may find necessary for the transmission of electricity, said underground conduits to be located substantially in accordance with the plan filed herewith marked – Sunset Way - Pembroke, Massachusetts.

The following are the streets and highways referred to: **30703943**

Sunset Way - Beginning at a point approximately 30 feet West of the centerline of the intersection of Reservoir Road and Sunset Way and continuing approximately 4,118 feet in a North direction. Install underground facilities on Sunset Way. Install ~4,118' of new conduit. Install seven new Pull Boxes.

Location approximately as shown on plan attached.

Massachusetts Electric Company d/b/a  
NATIONAL GRID *Robert Leonida*

BY \_\_\_\_\_  
Engineering Department

Dated: January 16, 2024

ORDERED:

Notice having been given and public hearing held, as provided by law, that the Massachusetts Electric Company d/b/a NATIONAL GRID be and it is hereby granted permission to excavate the public highways and to run and maintain underground electric conduits, together with such sustaining and protecting fixtures as said company may deem necessary, in the public way or ways hereinafter referred to, and to make the necessary house connections along said extensions, as requested in petition with said company dated the 16<sup>th</sup> day of January, 2024.

Said underground electric conduits shall be located substantially in accordance with the plan filed herewith marked – Sunset Way - Pembroke, Massachusetts **30703943**

The following are the public ways or part of ways along which the underground electric conduits above referred to may be laid:

Sunset Way - Beginning at a point approximately 30 feet West of the centerline of the intersection of Reservoir Road and Sunset Way and continuing approximately 4,118 feet in a North direction. Install underground facilities on Sunset Way. Install ~4,118' of new conduit. Install seven new Pull Boxes.

I hereby certify that the foregoing order was adopted at a meeting of the .....  
.....  
....., held on the ..... day of ....., 20 .....

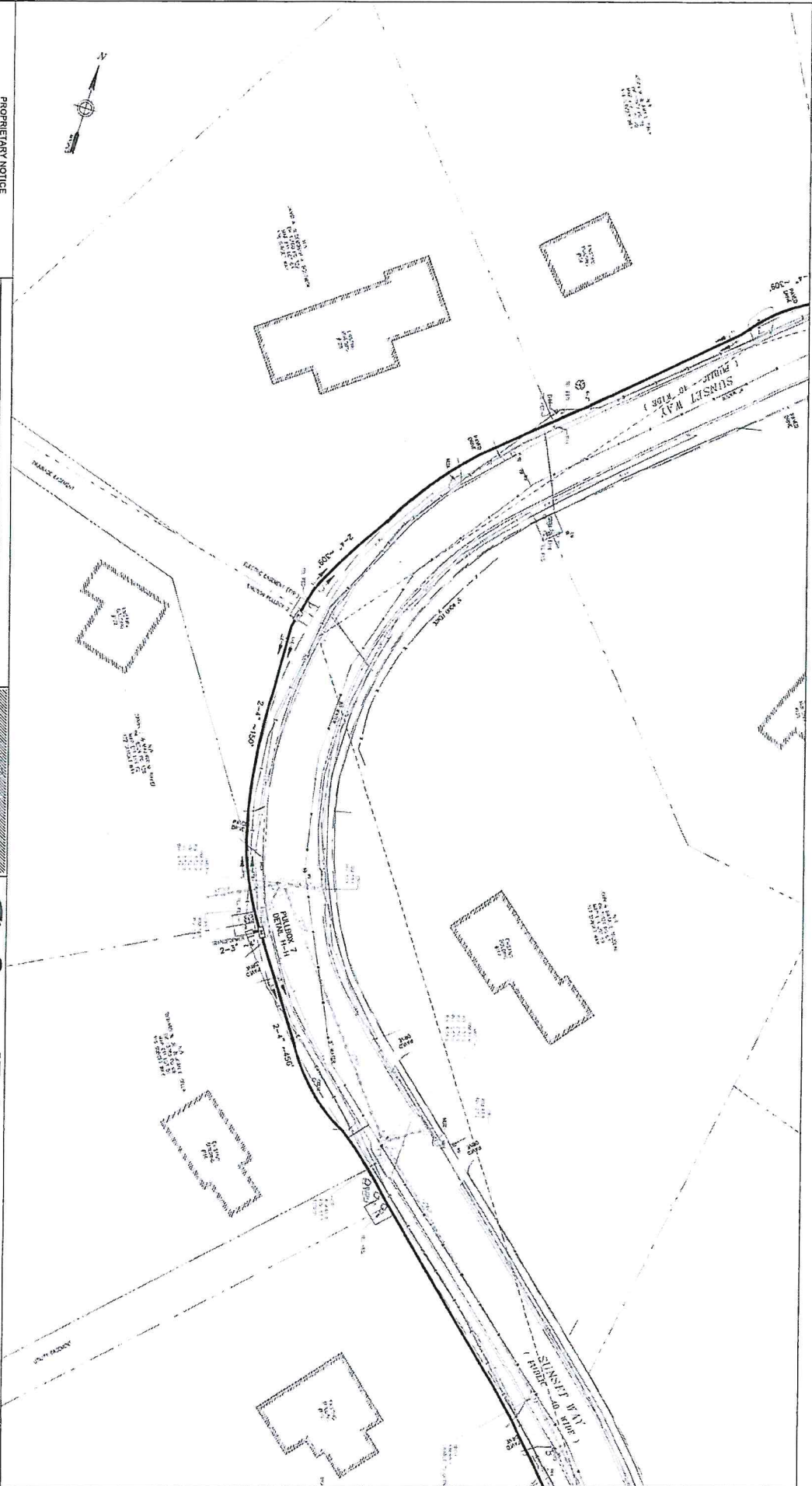
....., ..... 20 .....

Received and entered in the records of location orders of the City/Town of  
Book ..... Page .....

Attest:  
.....








PROPRIETARY NOTICE

THIS DOCUMENT, WHICH CONTAINS CONFIDENTIAL AND TRADE SECRET INFORMATION, IS THE PROPERTY OF CONTROLPOINT TECHNOLOGIES, INC. AND IS LOANED TO THE USER FOR THE USER'S USE ONLY. IT IS NOT TO BE REPRODUCED, COPIED, OR IN ANY MANNER DISCLOSED TO ANY OTHER PERSON OR ENTITY WITHOUT THE WRITTEN PERMISSION OF CONTROLPOINT TECHNOLOGIES, INC. IT IS NOT TO BE USED FOR ANY OTHER PURPOSE OR IN ANY MANNER THAT VIOLATES THE TERMS OF THE LICENSE AGREEMENT. CONTROLPOINT TECHNOLOGIES, INC. AND ITS AFFILIATES, AGENTS, AND SUBSIDIARIES SHALL NOT BE LIABLE FOR ANY DAMAGES, INCLUDING CONSEQUENTIAL DAMAGES, ARISING OUT OF OR FROM THE USE OF THIS DOCUMENT. ALL RIGHTS RESERVED.

REV	DESCRIPTION	DATE	CLD	ENGINEER	APPROVED
1	INITIAL DRAWING RELEASE	12/15/23	RJH	RJH	
2	REVISION 1 01/03/24	01/03/24	RJH	RJH	



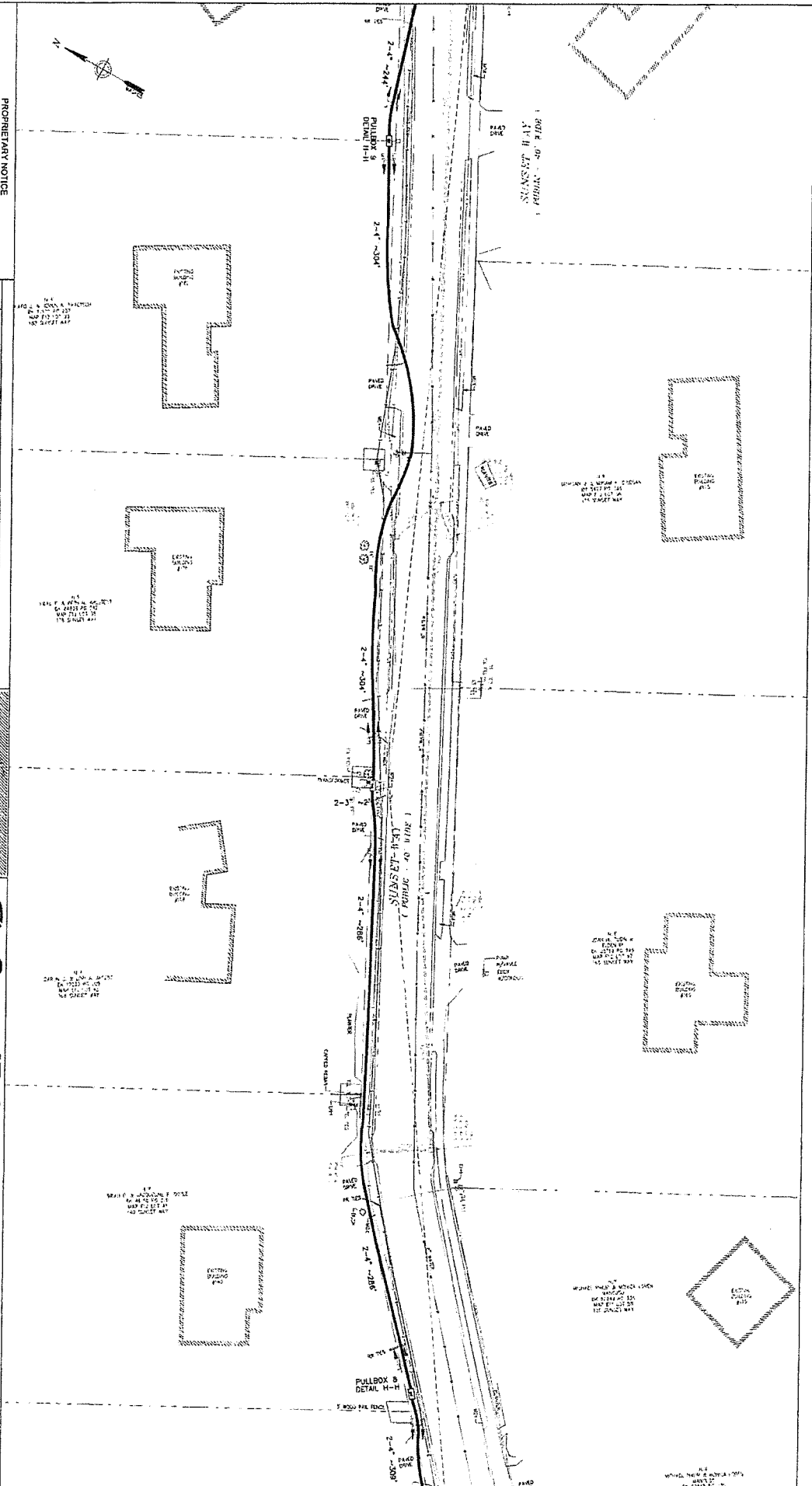
**ControlPoint**  
TECHNOLOGIES

200 LEEWOOD PLACE, SUITE 200, ROCKLAND, MA 02370  
ENGINEER: HOSHAU HOFFMAN  
RHO.PHILIP@CPTECH.COM

PEABROCKE PINEB LIND CARL E HENK ACHEMENT  
EDGEWATER DRIVE, PEABROCKE, MA  
VMA 3070343 & 3087325


SCALE: 1" = 20'  
DWG NO: N/A  
SHEET 21 OF 30  
REV: 2





THIS DOCUMENT, WHICH CONTAINS CONFIDENTIAL AND TRADE SECRET INFORMATION, IS THE PROPERTY OF CONTROLPOINT TECHNOLOGIES, INC. AND IS LOANED TO THE USER FOR THE USER'S USE ONLY. IT IS NOT TO BE REPRODUCED, COPIED, OR DISCLOSED IN ANY MANNER WITHOUT THE WRITTEN PERMISSION OF CONTROLPOINT TECHNOLOGIES, INC. IF YOU HAVE THIS DOCUMENT IN YOUR POSSESSION, YOU ARE TO BEAR FULL RESPONSIBILITY FOR ITS PROTECTION. IT IS TO BE KEPT IN A SECURE LOCATION AND NOT TO BE LOANED TO ANY OTHER PERSON OR ENTITY. IT IS TO BE DESTROYED WHEN NO LONGER NEEDED FOR THE USER'S USE. IF YOU ARE NOT SURE HOW TO DESTROY IT, CONTACT CONTROLPOINT TECHNOLOGIES, INC. AT 800.368.7263.

REV	DESCRIPTION	DATE	CAO	ENGINEER	APPROVED
1	INITIAL DRAWING RELEASE	12/15/23	RJM	RJM	
2	REVISION 1 01/03/24	01/03/24	RJM	RJM	



**ControlPoint**  
TECHNOLOGIES

200 LEDGEMOOD PLACE, SUITE 200, ROCKLAND, MA 02370  
ENGINEER: RICHARD HOFFMAN  
RHOFFMAN@CPTECH.COM

PEABODICE PRICES AND CABLE REPLACEMENT  
EISENHARTER DRIVE, PEABODICE, MA  
MA 02750 & 3097526

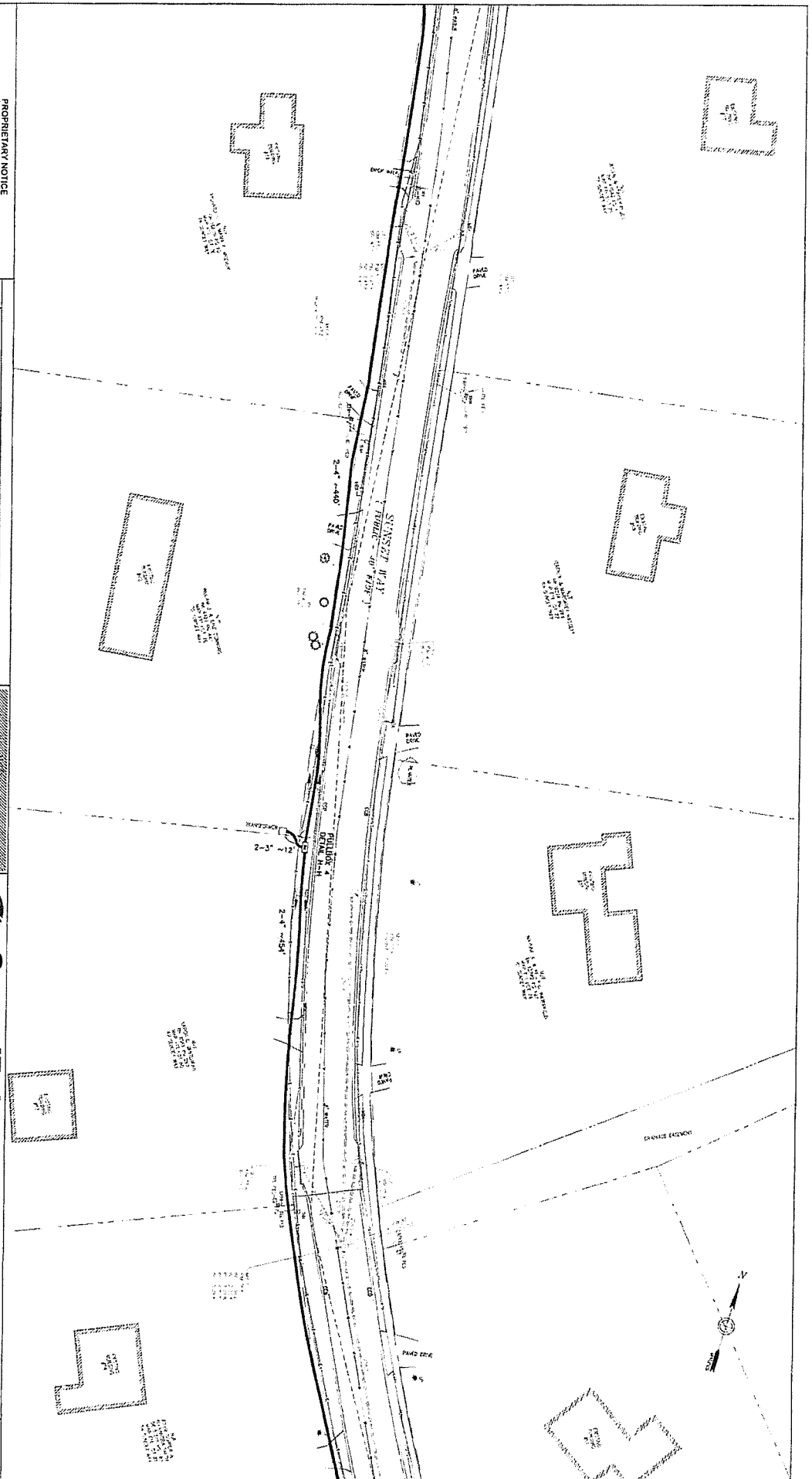
SCALE: 1" = 20'

DWG NO: WFG 3070394.5

SHEET: 22 OF 30

FIG. 2

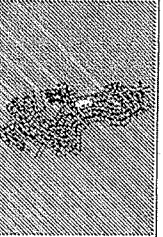




PROPRIETARY NOTICE

THIS DOCUMENT, WHICH CONTAINS CONFIDENTIAL AND TRADE SECRET INFORMATION, IS THE PROPERTY OF CONTROLPOINT TECHNOLOGIES, INC. AND IS LOANED TO THE RECIPIENT FOR CONSIDERATION OF THE RECIPIENT'S INTERESTS IN THE PROJECT. THE RECIPIENT AGREES TO MAINTAIN THE CONFIDENTIALITY AND TRADE SECRET STATUS OF THE INFORMATION CONTAINED HEREIN AND TO NOT DISCLOSE OR REPRODUCE THE INFORMATION IN ANY MANNER WITHOUT THE WRITTEN CONSENT OF CONTROLPOINT TECHNOLOGIES, INC. IT IS THE POLICY OF CONTROLPOINT TECHNOLOGIES, INC. TO PROTECT THE CONFIDENTIALITY AND TRADE SECRET STATUS OF THE INFORMATION CONTAINED HEREIN. THE RECIPIENT AGREES TO SIGN AND SUBMIT TO THE RECIPIENT'S EMPLOYER A CONFIDENTIALITY AND TRADE SECRET AGREEMENT. THE RECIPIENT AGREES TO SIGN AND SUBMIT TO THE RECIPIENT'S EMPLOYER A CONFIDENTIALITY AND TRADE SECRET AGREEMENT. THE RECIPIENT AGREES TO SIGN AND SUBMIT TO THE RECIPIENT'S EMPLOYER A CONFIDENTIALITY AND TRADE SECRET AGREEMENT.

REV	DESCRIPTION	DATE	CHG	ENGINEER	APPROVED
1	INITIAL DRAFTING RELEASE	12/19/23	RJH	RJH	
2	REVISION 1 01/03/24	01/03/24	RJH	RJH	



**ControlPoint**  
TECHNOLOGIES  
280 LEEWOOD PLACE, SUITE 300, ROCKLAND, MA 02370  
ENGINEER: HOSSEIN HOFFMAN  
RHOFFMAN@CPTECH.COM

**nationalgrid**  
PEABODICK PIERS IRON CABLE REPAIR FACILITY  
EDGEWATER DRIVE, PEABODICK, MA  
VMA 3007245 & 3007236  
SCALE: 1" = 20'  
VMA 3007245  
SHEET 18 OF 30  
REV 2

