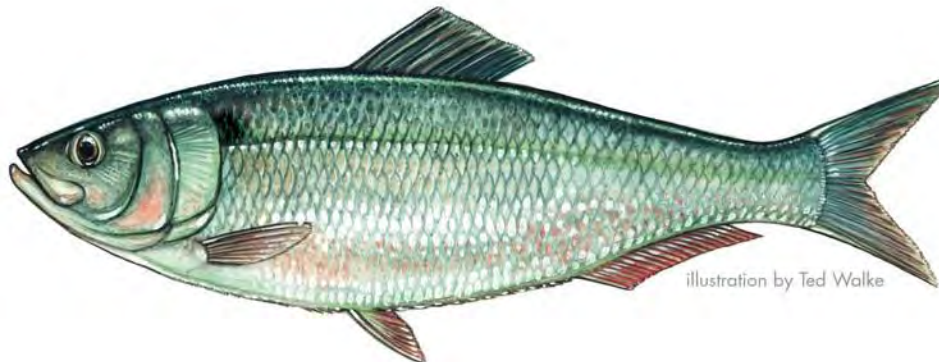
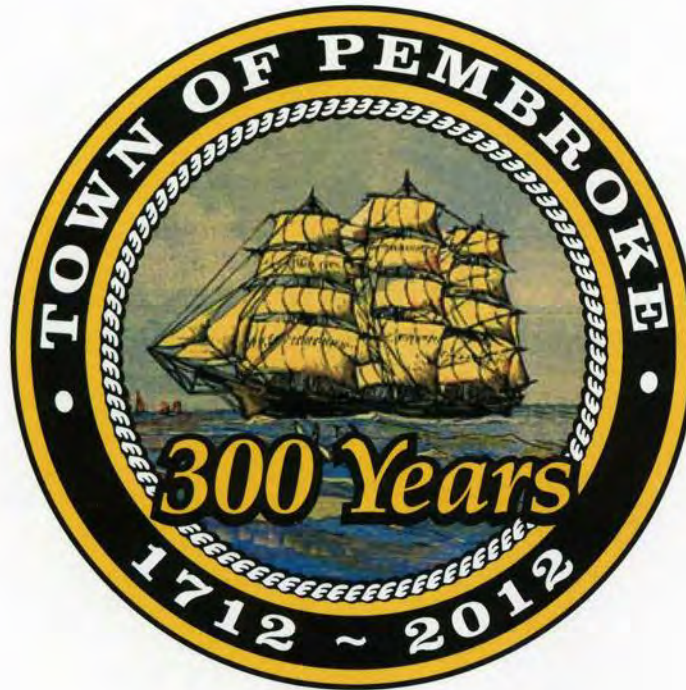


# Pembroke Herring Fisheries Commission



# Migration Path of the Herring

The path of the Herring starts in Oldham and Furnace Pond through the Gorham Mill Pond (ladder), along a stream into Glover Mill Pond (ladder), down the stream past the Herring Run Park, into Herring Brook, past Indian Head River into the North River and finally the New Inlet to the sea.

2015

# Oldham Pond 232 Acres



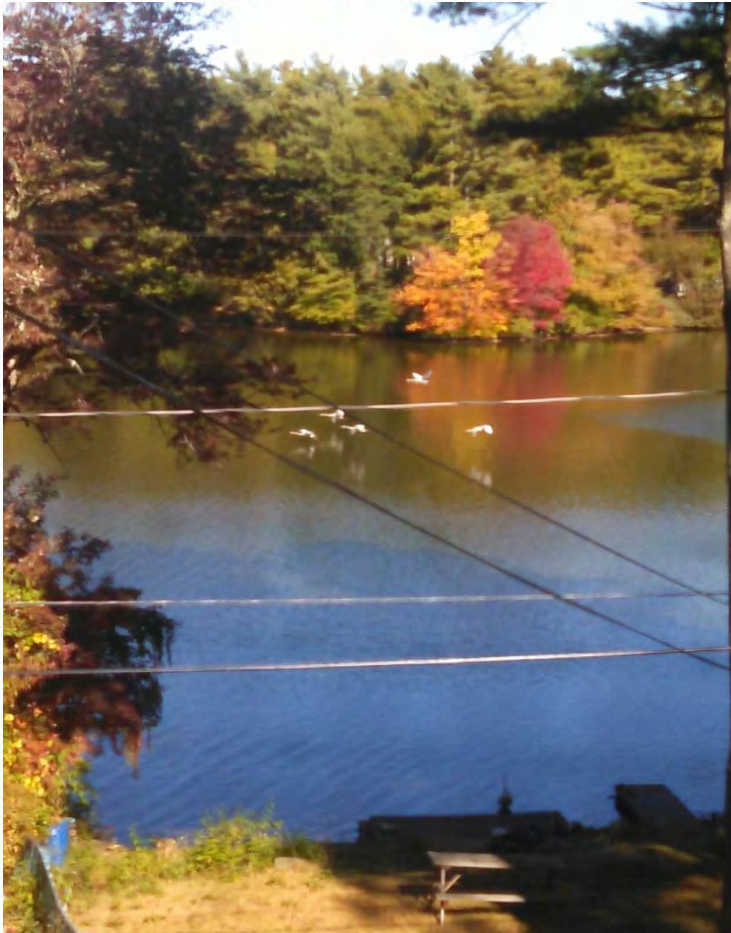
# Oldham to Furnace Pond



## Juvenile Herring following the brook from Oldham to Furnace Pond 2015

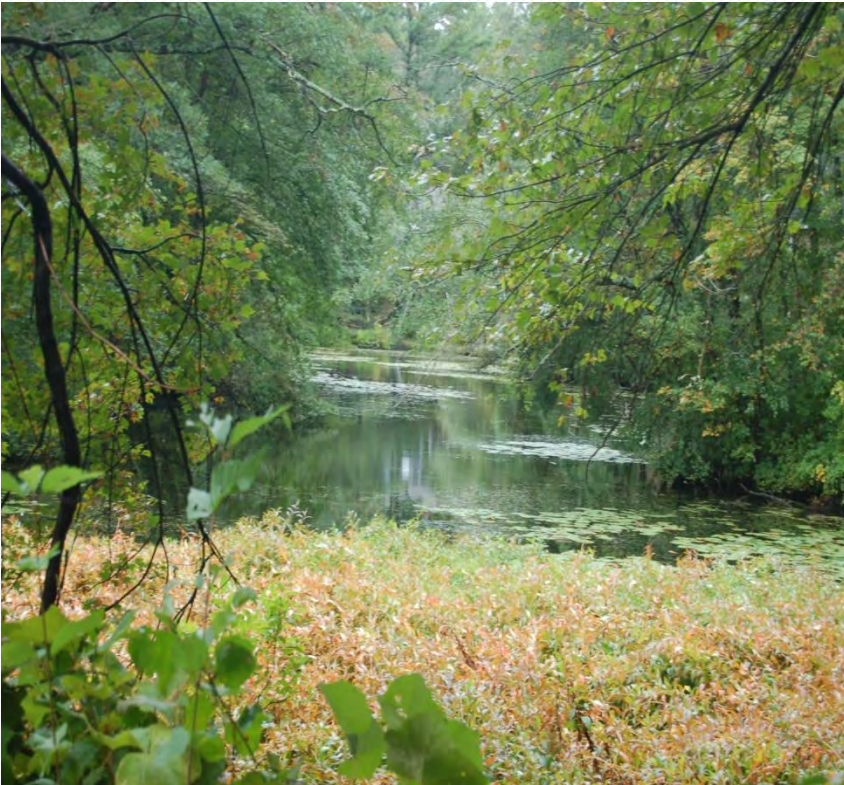


# Furnace Pond 107 Acres



# Gorham Mill Pond

**Toward Furnace Pond**



**Looking down stream**



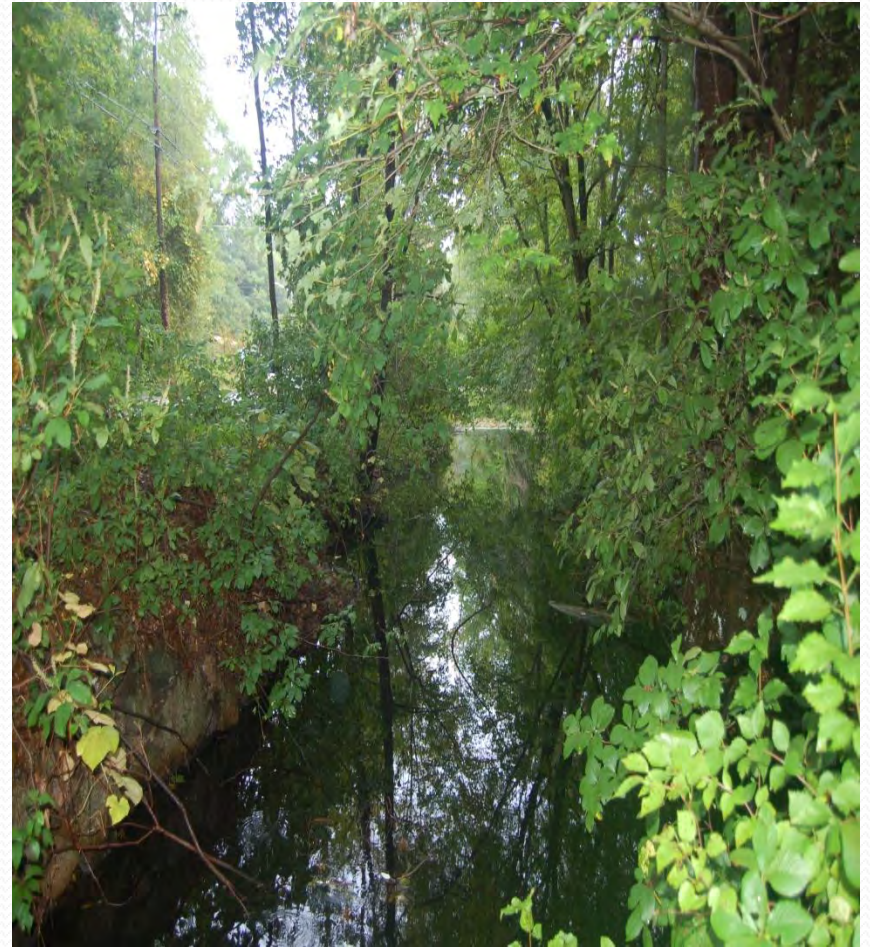


Gorham Mill Pond Fish Ladder

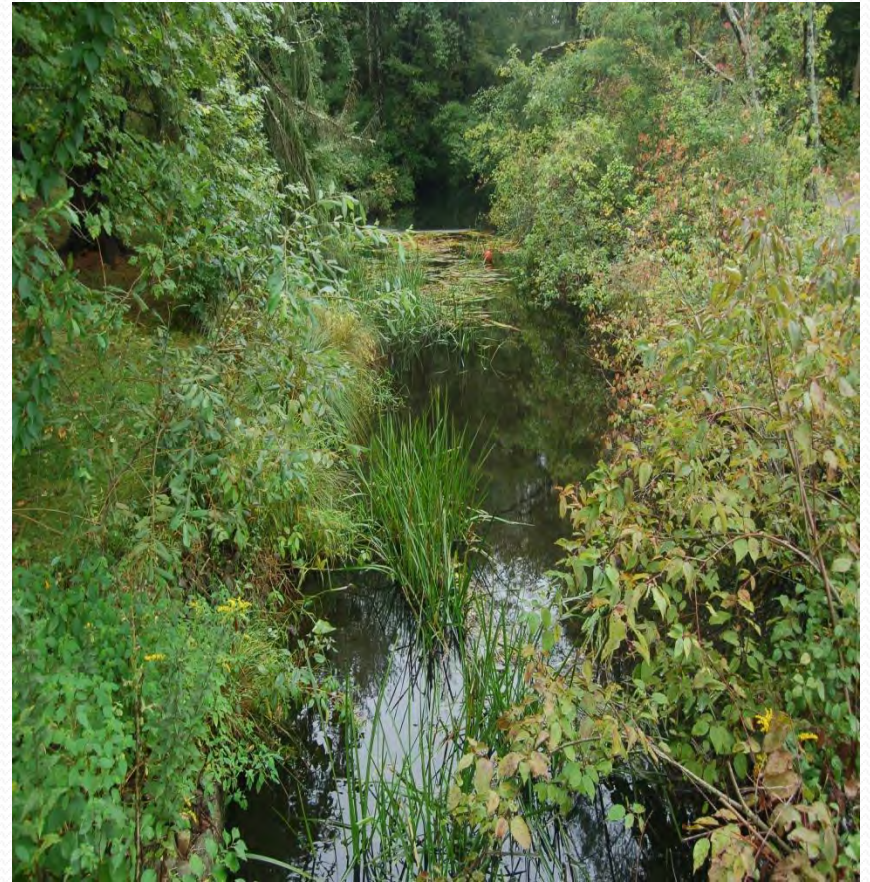
# Center St crossing



# Mill St crossing



# Hobomock St crossing



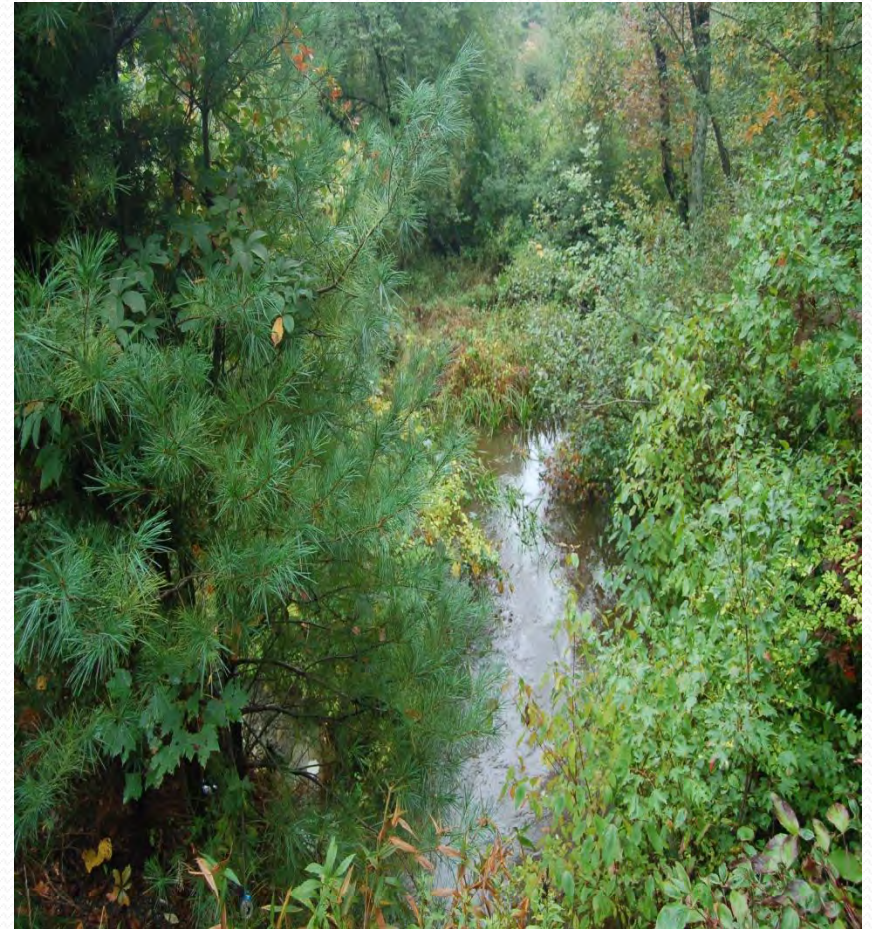
# Glover Mill Pond



# Glover Mill Pond Fish Ladder



# Mountian Ave crossing



# High St crossing



# Barker St crossing



# Herring Run Park



# Thomas Reading Memorial Park

Herring Run Shack

Site of the Old Water Wheel

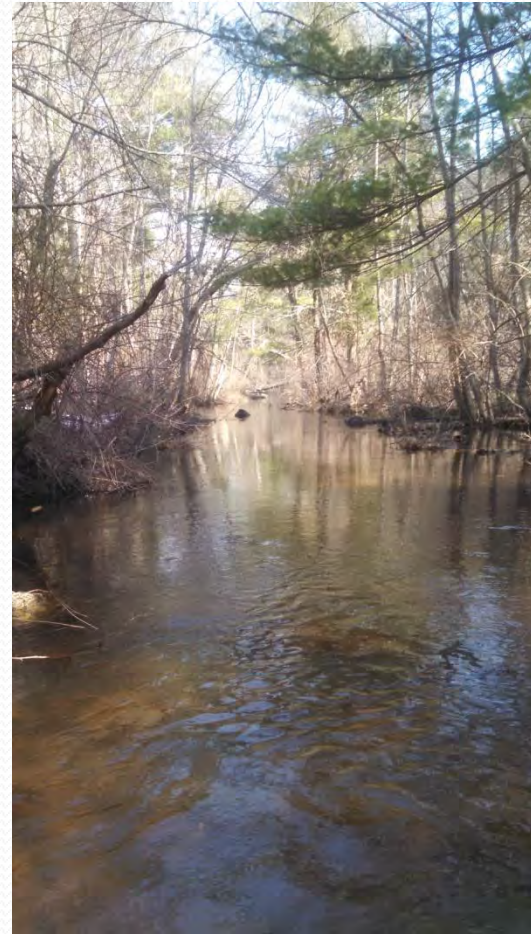


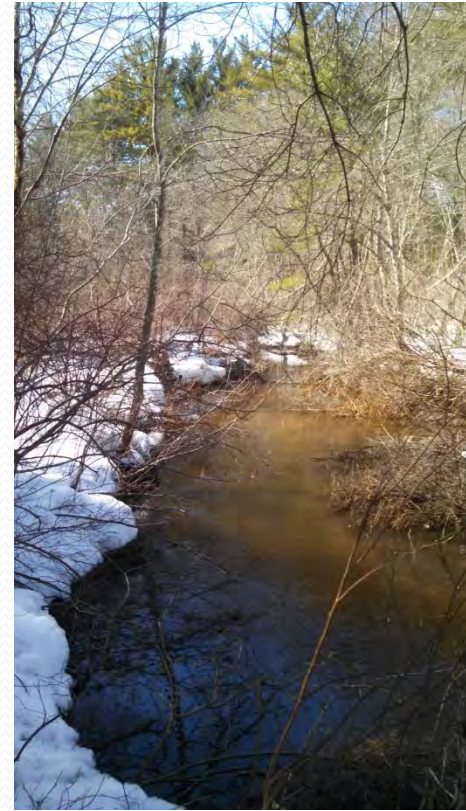
Site of the Grand Old Fish Fry

# Herring Run Park



# Cleaning the stream





# Cleaning the stream



# DMF Workers



# Herring Brook

Before



During



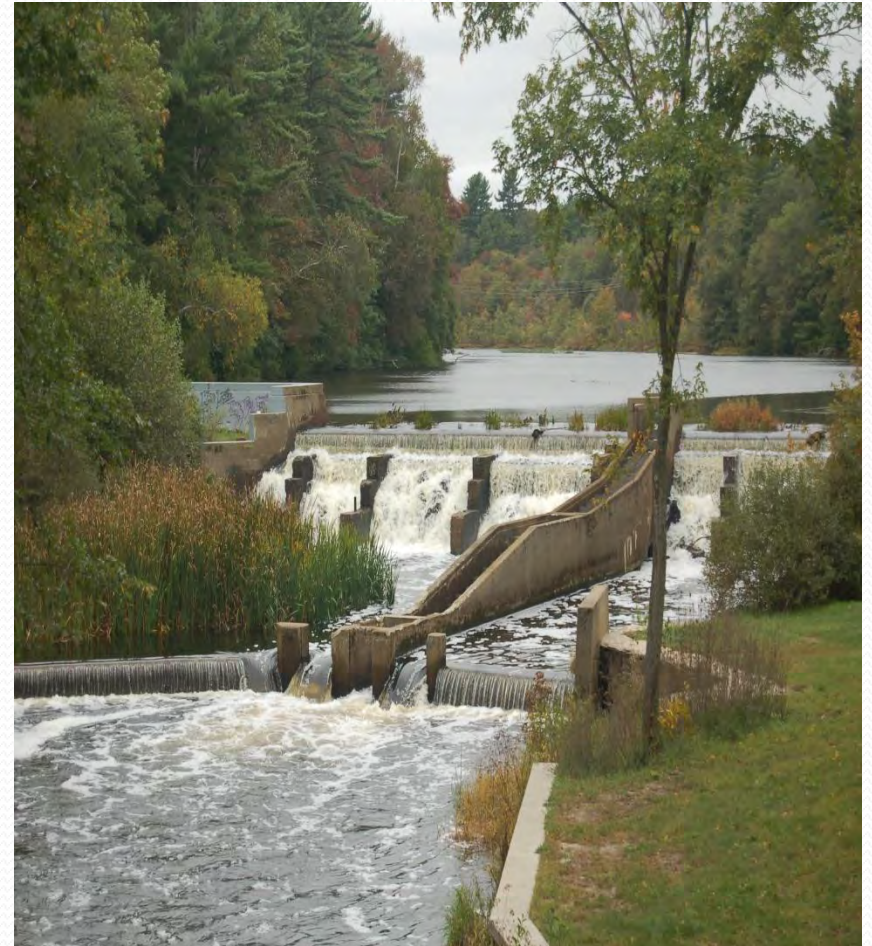
# Herring Brook



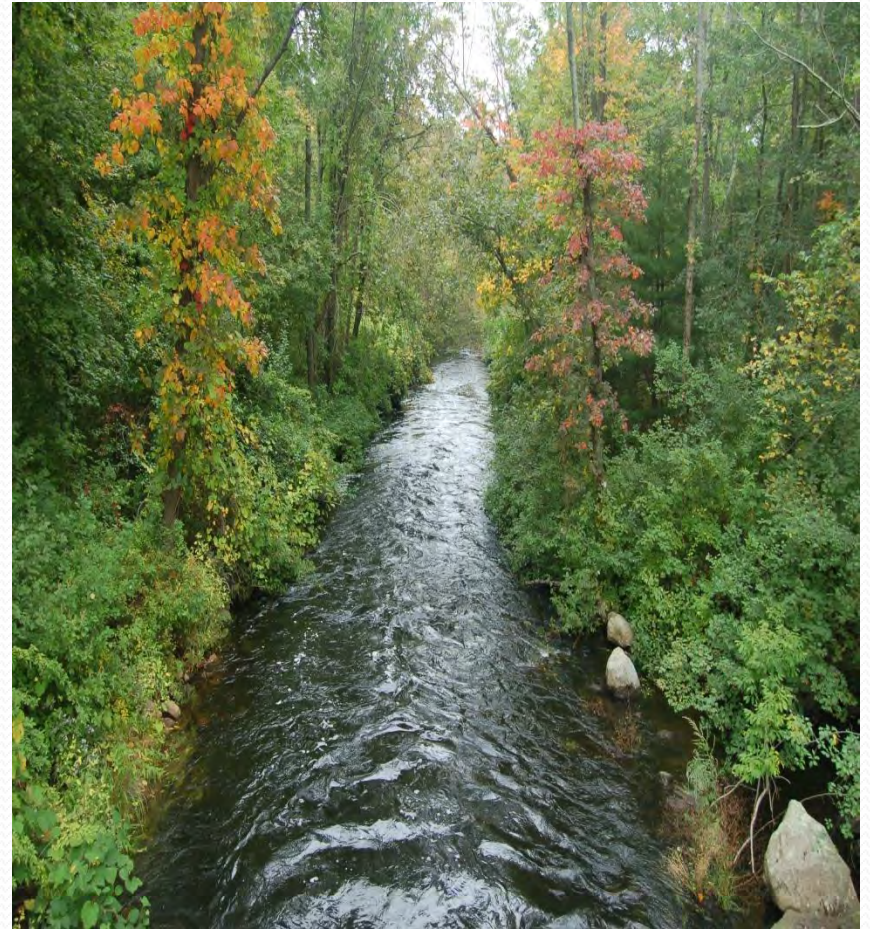
After all the hard work



# Indian Head River Reservoir



# Indian Head River



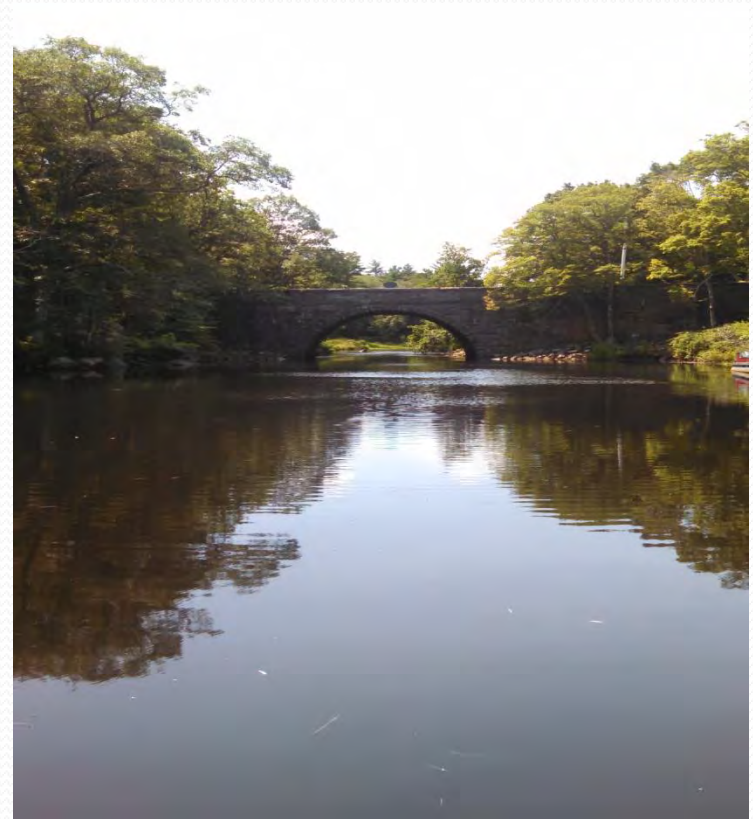
# North River Pem / Han



# Rt 53 Bridge Pem / Han



# Washington St Bridge Pem/Han



# Rt 3 Bridge Pembroke/Norwell



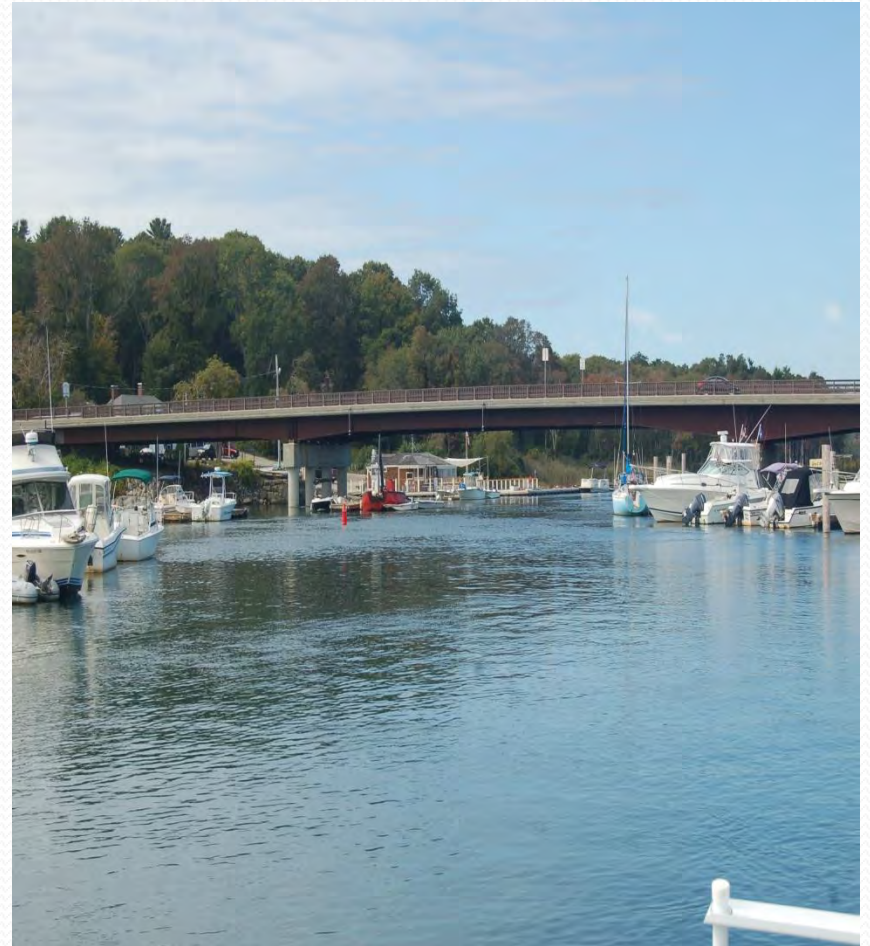
# Locations of Ship Yards



# Union St Bridge Marshfield



# Rt 3A Bridge Marshfield



# Damon's Point



# New Inlet / Bartletts Isle Way

